

## Original article

# Calciophylaxis: Beyond CKD-MBD<sup>☆</sup>

María Fernández, Enrique Morales\*, Eduardo Gutierrez, Natalia Polanco, Eduardo Hernández, Eva Mérida, Manuel Praga

Servicio de Nefrología, Hospital Universitario 12 de Octubre, Madrid, Spain

## ARTICLE INFO

## Article history:

Received 1 November 2016

Accepted 6 February 2017

Available online 28 September 2017

## Keywords:

Calciophylaxis

Chronic renal failure

Mortality

Non-renal forms

Oral anticoagulants

## ABSTRACT

**Introduction:** Calcific uraemic arteriopathy (CUA), also called calciophylaxis, is a rare but potentially fatal vascular disorder that almost exclusively affects patients with chronic renal failure. The objective of this study was to analyse various risk factors for developing CUA and its subsequent clinical course according to the treatment received.

**Materials and methods:** A retrospective study that included patients diagnosed with CUA from December 1999 to December 2015. Various risk factors, clinical course and treatment options were analysed.

**Results:** A total of 28 patients (53.6% females) with a mean age of  $67.2 \pm 11.8$  (38–88) years were included. At the time of diagnosis, 53.6% were on haemodialysis, 25% were kidney transplant patients and 21.4% had normal renal function. The use of steroids (100%,  $p = 0.001$ ) was the main risk factor in renal transplant patients. Skin lesions resolved in 60.7% (especially in those receiving multitargeted therapy). Patient survival at 12 months was 29% in transplant patients, 57% in haemodialysis patients and 100% in normal renal function patients (log-rank 6.88,  $p = 0.032$ ). Chronic renal failure ( $p = 0.03$ ) and hypoalbuminaemia ( $p = 0.02$ ) were the main risk factor for CUA mortality.

**Conclusions:** Although the incidence of CUA remains low, CUA mortality is very high, special attention to its occurrence in kidney transplant patients and “non-renal” CUA forms is required. Oral anticoagulants and steroids appear to be the main risk factors, CUA is a challenge; a registry of patients and determining standard therapy are required.

© 2017 Sociedad Española de Nefrología. Published by Elsevier España, S.L.U. This is an open access article under the CC BY-NC-ND license (<http://creativecommons.org/licenses/by-nc-nd/4.0/>).

<sup>☆</sup> Please cite this article as: Fernández M, Morales E, Gutierrez E, Polanco N, Hernández E, Mérida E, et al. Calcifilaxis: más allá de CKD-MBD. Nefrología. 2017;37:501–507.

\* Corresponding author.

E-mail address: [emorales@senefro.org](mailto:emorales@senefro.org) (E. Morales).

2013-2514/© 2017 Sociedad Española de Nefrología. Published by Elsevier España, S.L.U. This is an open access article under the CC BY-NC-ND license (<http://creativecommons.org/licenses/by-nc-nd/4.0/>).

## Calcifilaxis: más allá de CKD-MBD

### R E S U M E N

#### Palabras clave:

Calcifilaxis  
Insuficiencia renal crónica  
Mortalidad  
Formas no renales  
Anticoagulantes orales

**Introducción:** La arteriopatía urémica calcificante (CUA), también llamada calcifilaxis, es un trastorno vascular poco frecuente pero potencialmente mortal que afecta casi exclusivamente a pacientes con insuficiencia renal crónica. El objetivo de este estudio fue analizar los diferentes factores de riesgo para el desarrollo de CUA y su posterior evolución según la terapia recibida.

**Material y métodos:** Estudio retrospectivo que recoge aquellos pacientes con diagnóstico de CUA desde diciembre de 1999 hasta diciembre de 2015. Se analizaron diferentes factores de riesgo, evolución y diferentes opciones terapéuticas.

**Resultados:** Se incluyeron 28 pacientes (53,6% mujeres) con una edad media de  $67,2 \pm 11,8$  años (38-88). En el momento del diagnóstico, el 53,6% estaba en hemodiálisis, un 25% eran pacientes con un trasplante renal y el 21,4% presentaba función renal normal. En los pacientes trasplantados, el consumo de esteroides (100%;  $p=0,001$ ) fue el principal factor de riesgo. La resolución de lesiones cutáneas se produjo en el 60,7% (especialmente en los que recibieron tratamiento *multitarget*). La supervivencia de los pacientes a los 12 meses fue de 29, 57 y 100% en los pacientes trasplantados, hemodiálisis y con función renal normal respectivamente (log-rank 6,88;  $p=0,032$ ). La presencia de insuficiencia renal crónica ( $p=0,03$ ) e hipoalbuminemia ( $p=0,02$ ) fueron los principales factores de riesgo de mortalidad CUA.

**Conclusión:** Aunque la incidencia de la CUA sigue siendo baja, su mortalidad es muy elevada, por lo que debe prestarse especial atención a la presentación de la CUA en los trasplantados renales y en las formas «no renales». Los anticoagulantes orales y los esteroides aparecen como principales factores de riesgo. La CUA es un reto: necesitamos un registro de nuestros pacientes y establecer una terapia estándar.

© 2017 Sociedad Española de Nefrología. Publicado por Elsevier España, S.L.U. Este es un artículo Open Access bajo la licencia CC BY-NC-ND (<http://creativecommons.org/licenses/by-nc-nd/4.0/>).

## Introduction

Calciphylaxis, also called calcific uraemic arteriopathy (CUA), is an uncommon but serious condition with a high rate of mortality.<sup>1,2</sup>

CUA develops in the dermis and subcutaneous tissue, generally in areas of adiposity. It is characterised by pruritic or painful skin lesions, purplish nodules, ulcers and sores that develop into ischaemic necrosis of the skin.<sup>3</sup> A histological examination may reveal medial calcification and intimal proliferation in the small arteries, with or without endovascular fibrosis, extravascular calcification and vascular thrombosis.<sup>4</sup>

It occurs more frequently in patients with advanced chronic kidney disease on dialysis or in renal transplant patients; however, cases of calciphylaxis have been reported in subjects with normal renal function, classified as “non-renal” CUA.<sup>5</sup>

The pathogenesis of this vascular disease is complex and not well understood, but there are several mechanisms thought to be involved in its development. Over the years, other risk factors have been added to the traditional factors of bone and mineral metabolism (hyperparathyroidism, hypercalcaemia and hyperphosphataemia) and its high prevalence in patients with low bone metabolism.<sup>6,7</sup> These include: female gender, diabetes, obesity, local trauma, hypoalbuminaemia, hypercoagulable states and exposure to active vitamin D, calcium chelators, corticosteroids and vitamin K

antagonists.<sup>8-11</sup> This amalgam of factors has generated a new patient phenotype that shows lesions from calciphylaxis that are unlike the classic image of this condition.

Despite the poor prognosis of this condition, the use of multidisciplinary treatment in recent years (treatment of pain and of superinfections, intensification of haemodialysis, bisphosphonates, sodium thiosulfate, non-calcium chelators, cinacalcet, vitamin K and pentoxifylline) has seen survival increase in these patients.<sup>12-14</sup>

The objective of this study was to analyse the current epidemiology of calciphylaxis in the region of Hospital 12 de Octubre, the risk factors for its development and the patients' clinical courses depending on the treatment received.

## Material and methods

An observational and retrospective study was performed on a series of patients diagnosed with calciphylaxis between December 1999 and December 2015 at Hospital Universitario 12 de Octubre in Madrid.

The following data were recorded: gender, age, Charlson comorbidity index, status at diagnosis (patients on haemodialysis, with a normally functioning renal transplant or without kidney disease), aetiology of chronic kidney disease (CKD), time to renal replacement therapy (haemodialysis and renal transplantation), cardiovascular risk factors

(hypertension, diabetes mellitus, obesity), chronic ischaemic syndrome, coronary artery disease, atrial fibrillation, presence of hepatitis C virus, bone metabolism parameters (PTH, calcium, phosphorus, alkaline phosphatase), serum albumin, type of involvement (distal or proximal), usual treatment of the patients prior to the development of calciphylaxis, diagnosis of calciphylaxis (by symptoms, biopsy or both), therapeutic strategies (conventional treatment – intensification of haemodialysis, support measures or amputation of the affected limb vs. *multi-target* treatment – conventional treatment with sodium thiosulfate, bisphosphonates, cinacalcet, non-calcium chelators or pentoxifylline), course of the lesions, follow-up, survival, calciphylaxis-related death (to establish this connection, the cutoff point was established in the first 6 months after the development of calciphylaxis) and other causes of death.

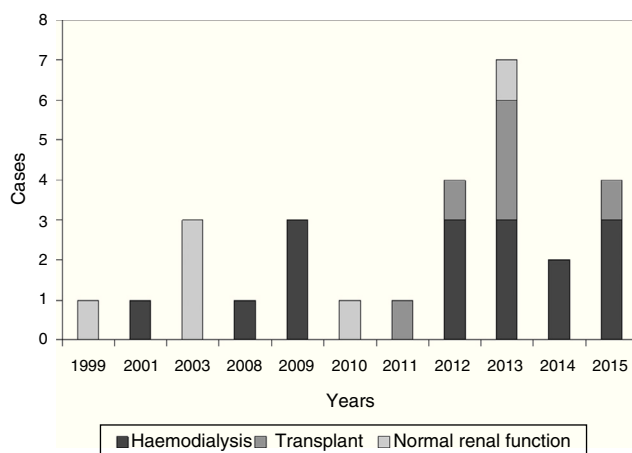
In the statistical analysis, the quantitative variables were expressed as the mean, standard deviation and range, while the qualitative variables were expressed as the absolute number and percentage. To compare the quantitative variables, the Student's *t*-test was used, and the chi-squared test was used for the qualitative variables. The clinical course from diagnosis to death was described using the Kaplan–Meier method. Values of  $p < 0.05$  were considered statistically significant. The statistical analysis was performed using SPSS (version 20 for Windows).

## Results

### General epidemiological data

We identified 28 patients diagnosed with calciphylaxis, a 53.6% were women, and all were Caucasian. The mean age was  $67.2 \pm 11.8$  years (38–88). Fig. 1 shows the distribution of cases by year.

At diagnosis, 53.6% ( $n = 15$ ) were on replacement therapy with haemodialysis (HD); 25% ( $n = 7$ ) had a renal transplant with normal function (Tx); and 21.4% ( $n = 6$ ) had no kidney disease: they were identified as subjects with “normal renal function” (NRF).



**Figure 1** – Patients diagnosed from December 1999 to December 2015.

The most common causes of CKD (in patients on HD and in those who had received a renal transplant) were nephroangiosclerosis (22.7%;  $n = 5$ ), diabetic nephropathy (18.2%;  $n = 4$ ) and glomerular disease (18.2%;  $n = 4$ ).

The mean time to renal replacement therapy (including HD and renal transplant) was  $133.7 \pm 102.8$  (10–324) months.

Different variables were collected in relation with comorbidity, regular treatment and type of renal replacement therapy treatment (hemodialysis (HD), renal transplantation (RT) or normal renal function (NRF)) before the calciphylaxis lesions had developed (Table 1). It is important to emphasize that there was no statistical significance between the different variables and the development of calciphylaxis, except with steroids ( $p = 0.001$ ). The use of anticoagulants in patients who were not on haemodialysis (renal transplant patients and patients with normal renal function) showed a trend close to statistical significance ( $p = 0.07$ ).

### Forms of presentation

In 82.1% of cases ( $n = 23$ ), the lesions showed a distal distribution, with proximal involvement in the other 17.9% ( $n = 5$ ).

The diagnosis was based on clinical suspicion together with a biopsy in 22 patients (78.6%), while it was purely clinical in the remaining 6 (21.4%). Fig. 2 shows some representative images of the calciphylaxis lesions.

### Biochemical parameters

Values for bone metabolism parameters and serum albumin were collected at diagnosis, and these are shown in Table 2. It should be noted that there were no significant differences across groups, except when comparing the PTH values between patients on HD vs. patients with NRF ( $p = 0.002$ ) and between transplant patients vs. patients with NRF ( $p = 0.03$ ). As for blood albumin levels, patients with CKD also had values below the normal limit.

### Treatment

In terms of treatment options, 71.4% ( $n = 20$ ) received a combined treatment (*multi-target*), while the remaining 28.6% ( $n = 8$ ) received conventional treatment.

Focusing on the combined treatment, Table 3 shows all the therapeutic options that were used (by group and in total). It should be noted that with respect to *multi-target* treatment, there were significant differences across the different groups. Haemodialysis sessions were performed with low calcium baths; the bisphosphonates used were ibandronate or alendronate; and the non-calcium chelators were sevelamer or lanthanum.

### Clinical course and mortality

Patients were followed for an average of 26.29 months (1–192).

The lesions resolved in 60.7% of the patients ( $n = 17$ ), while in the remaining 39.3% ( $n = 11$ ) they did not disappear. With respect to the rate of mortality, 39.3% ( $n = 11$ ) died due to the calciphylaxis itself: 40% of the patients on HD ( $n = 6/15$ ) and 71.4% of the transplant patients ( $n = 5/7$ ).

**Table 1 – Risk factors prior to the onset of calciphylaxis.**

	HD (n = 15)	Tx (n = 7)	NRF (n = 6)	Total (n = 28)
HTN n (%)	13 (87.6)	6 (85.7)	4 (66.7)	23 (82.5)
DM n (%)	5 (33.3)	4 (57.1)	4 (66.7)	13 (46.4)
Obesity n (%)	6 (40)	4 (57.1)	2 (33.3)	12 (42.9)
CAD n (%)	7 (46.7)	2 (28.6)	2 (33.3)	11 (39.3)
CI n (%)	10 (66.7)	3 (42.9)	3 (50)	16 (57.1)
AF n (%)	5 (33.3)	2 (28.6)	2 (33.3)	9 (32.1)
HCV n (%)	3 (20)	2 (28.6)	0 (0)	5 (17.9)
<b>Usual treatment before calciphylaxis</b>				
Calcium carbonate n (%)	3 (20)	1 (14.3)	2 (33.3)	6 (21.4)
Steroids n (%)	2 (13.3)	7 (100)*	1 (16.7)	10 (35.7)
Active vitamin D n (%)	9 (60)	2 (28.6)	2 (33.3)	13 (46.4)
Iron infusion n (%)	4 (26.7)	0 (0)	2 (33.3)	6 (21.4)
OAC n (%)	8 (53.3)	6 (85.7)	5 (83.3)	19 (67.9)
Antiplatelet drugs n (%)	6 (40)	1 (14.3)	2 (33.3)	9 (32.1)

AF: atrial fibrillation; CAD: coronary artery disease; CI: chronic ischaemia; DM: diabetes mellitus; HCV: hepatitis C virus; HD: haemodialysis; HTN: hypertension; NRF: normal renal function; OAC: oral anticoagulants; Tx: renal transplant patients.

\*  $p = 0.001$ .



**Figure 2 – Skin lesion on lower limb caused by calciphylaxis (top right). Histological lesions in the subcutaneous cellular tissue with areas of calcification, some of them perivascular, consistent with calciphylaxis (bottom right). X-ray of left-hand showing vascular calcifications (left).**

**Table 2 – Biochemical parameters of bone metabolism and serum albumin.**

	HD (n = 15)	Tx (n = 7)	NRF (n = 6)	Total (n = 28)
PTH (pg/ml)	433.5 ± 627.4 (12–2613)*	269.1 ± 235.6 (3–617)	34.8 ± 15 (21–50.8)	339.6 ± 552 (3–2613)
Calcium (mg/dl)	9.2 ± 0.5 (8–10.2)	8.6 ± 1.4 (6.3–9.9)	9.4 ± 1.1 (8–11.1)	9.1 ± 0.9 (6.3–11.1)
Phosphorus (mg/dl)	4.3 ± 1.5 (2.2–6.5)	4.2 ± 1 (2.6–5.7)**	3.1 ± 0.2 (2.9–3.4)	4.0 ± 1.3 (2.2–6.5)
Alkaline phosphatase (IU/l)	156.8 ± 107.4 (45–423)	102.5 ± 48.9 (64–205)	103 ± 59.2 (63–171)	130.2 ± 91.4 (45–423)
Product Ca × P	39.1 ± 12.1 (21.3–58.5)	36.1 ± 10.9 (24.4–56.4)	29.8 ± 5.1 (23.2–37.7)	36.3 ± 10.9 (21.3–58.5)
Serum albumin (g/dl)	3.2 ± 0.7 (1.7–4.5)	3.2 ± 0.7 (2.1–4.4)	3.8 ± 0.7 (2.5–4.3)	3.3 ± 0.7 (1.7–4.5)

NRF: normal renal function; HD: haemodialysis; Tx: renal transplant patients.

\*  $p = 0.002$  HD vs. NRF.

\*\*  $p = 0.03$  Tx vs. NRF.

The main cause of death was infection (64%), followed by cardiovascular disease (27.2%).

The different risk factors regarding the calciphylaxis-related mortality rate (Table 4) were analysed and the presence

of CKD ( $p = 0.03$ ) and central distribution of the lesions ( $p = 0.04$ ) were statistically significant.

The differences of the main variables of bone and mineral metabolism were analysed according to the presence of

**Table 3 – Treatment options used.**

	HD (n = 15)	Tx (n = 7)	NRF (n = 6)	Total (n = 28)
Intensification of HD n (%)	13 (86.7)*	4 (57.1)**	0 (0)	17 (60.7)
Sodium thiosulfate n (%)	10 (66.7)*	6 (85.7)**	1 (16.6)	17 (60.7)
Bisphosphonates n (%)	11 (73.3)*	5 (71.4)**	1 (16.6)	17 (66.7)
Cinacalcet n (%)	9 (60)*	3 (42.9)**	0 (0)	12 (42.9)
Non-calcium chelators n (%)	8 (53.3)*	1 (14.3)	0 (0)	9 (32.1)
Vitamin K n (%)	5 (33.3)	0 (0)	1 (16.6)	6 (21.4)
Pentoxifylline n (%)	5 (33.3)	1 (14.3)	0 (0)	6 (21.4)
Amputation n (%)	1 (7.1)	1 (14.3)	0 (0)	2 (7.4)

NRF: normal renal function; HD: haemodialysis; Tx: renal transplant patients.

\*  $p < 0.05$  HD vs. NRF.  
\*\*  $p < 0.05$  Tx vs. NRF.

**Table 4 – Influence of different factors on calciphylaxis-related mortality.**

Factors	Death n = 11 (%)	Living n = 17 (%)	p
>70 years	4 (36.4)	8 (47.1)	0.57
CCI >7	9 (81.8)	8 (47.1)	0.06
CKD	11 (100)	11 (64.7)	0.03
HTN	9 (81.8)	14 (82.4)	0.97
DM	5 (45.5)	8 (47.1)	0.93
Obesity	5 (45.5)	7 (41.2)	0.82
CI	6 (54.5)	10 (58.8)	0.81
CAD	4 (36.4)	7 (41.2)	0.81
AF	3 (27.3)	6 (35.3)	0.65
OAC	7 (63.6)	12 (70.6)	0.77
Central lesion	4 (36.4)	1 (5.9)	0.04
Multi-target treatment	9 (81.8)	11 (64.7)	0.31

AF: atrial fibrillation; CAD: coronary artery disease; CCI: Charlson comorbidity index; CI: chronic ischaemia; CKD: chronic kidney disease; DM: diabetes mellitus; HTN: hypertension; OAC: oral anticoagulation.

**Table 5 – Different variables related to the presence or absence of CKD and death due to calciphylaxis.**

	CKD (n = 18)	NRF (n = 6)	p	Death due to CUAYes (n = 11)	Death due to CUANo (n = 17)	p
PTH (pg/ml)	381.2 ± 553.3 (3–2613)	34.9 ± 15 (21–50.8)	0.02	281.3 ± 202.1 (3–617)	385.4 ± 688.9 (21–2613)	0.62
Calcium (mg/dl)	9 ± 0.9 (6.3–10.1)	9.4 ± 1.1 (8–11.1)	0.31	8.9 ± 1.1 (6.3–9.9)	9.3 ± 0.8 (8–11.1)	0.31
Phosphorus (mg/dl)	4.3 ± 1.3 (2.2–6.5)	3.1 ± 0.2 (2.9–3.4)	0.05	4.3 ± 1.4 (2.2–6.5)	3.8 ± 1.2 (2.6–6.4)	0.27
Alkaline phosphatase (IU/l)	139.6 ± 95.1 (45–423)	103 ± 59.2 (63–171)	0.52	147.2 ± 112.7 (45–423)	125.8 ± 73.6 (47–187)	0.57
Serum albumin (g/dl)	3.3 ± 0.7 (1.7–4.4)	3.8 ± 0.7 (2.5–4.3)	0.16	2.9 ± 0.6 (1.7–3.7)	3.6 ± 0.6 (2.2–4.4)	0.02

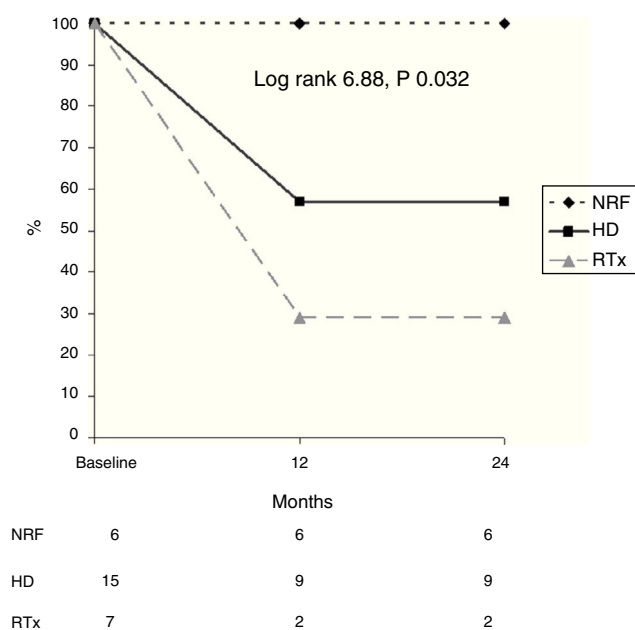
CKD: chronic kidney disease; CUA: calcific uraemic arteriopathy; NRF: normal renal function; PTH: parathyroid hormone.

CKD and calciphylaxis-related death (Table 5). Statistical significance was found between the latter, hyperparathyroidism ( $p = 0.02$ ) and elevated blood phosphate ( $p = 0.05$ ).

In addition, survival as related to death due to calciphylaxis was analysed in each diagnostic group (Fig. 3). After 12 months, 56% of patients on HD, 23% of renal transplant patients and 100% of patients with NRF were alive. After 24 months, 56% of patients on HD, 100% of patients with NRF and 23% of renal transplant patients were alive (log rank 6.88;  $p = 0.032$ ).

## Discussion

Calciphylaxis is a rare condition that is usually associated with CKD, with a prevalence between 1% and 4% in dialysis patients.<sup>1,15</sup> In our series, 28 patients were diagnosed over a period of 16 years, which suggests that, despite the low incidence, calciphylaxis should be taken into account in any differential diagnosis.



**Figure 3 – Analysis of survival regarding death due to calciphylaxis in the different groups (NRF: normal renal function; HD: haemodialysis; RTx: renal transplant).**

Contrary to what might be expected, the patient profile has changed: calciphylaxis does not exclusively affect subjects with CKD on dialysis, but it also occurs in renal transplant patients with normal graft function and even in patients with no kidney disease<sup>16,17</sup> (in our study, 21.4% had normal renal function).

In general, it is more prevalent in obese women,<sup>2</sup> as our case-series shows. The majority of the patients showed cardiovascular risk factors (hypertension, diabetes mellitus, obesity), coronary disease and chronic ischaemia, which causes tissue hypoperfusion.<sup>8,10,18</sup> These factors are replacing the classic protagonists of calciphylaxis, such as those attributed to bone and mineral metabolism.<sup>19,20</sup> One example of this can be found in our series, where hyperparathyroidism, elevated blood phosphate levels and normal calcium were observed only in patients with CKD. However, other risk factors, such as steroids (in the group of renal transplant patients, 100% took these drugs) are increasingly prominent as the causes behind the onset of this condition. This finding is of great importance and clinical interest for reconsidering indicating these treatments for high-risk patients. With all these findings we can describe a new phenotype of patients with calciphylaxis to which we must pay more attention: a subject with renal failure (patient on dialysis or renal transplant patient), elevated comorbidity and a pronounced cardiovascular profile (hypertensive, diabetic and with peripheral vascular disease), treated with oral anticoagulants and with hypoalbuminaemia due to chronic inflammation or malnutrition.<sup>3,8</sup>

In all cases, the skin lesions showed a poor clinical course and were highly suggestive of calciphylaxis, which was confirmed with a biopsy in 78.6% of the cases; in some patients,

X-rays were performed which showed the calcification of the vessels.

A fundamental and increasingly important aspect of calciphylaxis is the use of combined or *multi-target* treatment. There is strong evidence showing that skin lesions improve and survival increases when combined or *multi-target* treatment is used.<sup>13,21,22</sup> Although there is no standardised therapy, it is recommended to discontinue calcium chelators, oral anticoagulants (using low molecular weight heparin instead) and vitamin D; the frequency of dialysis should also be increased (if necessary) to 5–6 weekly sessions with a low calcium bath.<sup>23</sup> In addition, drugs such as non-calcium chelators<sup>24–26</sup> (e.g. sevelamer, which inhibits ectopic calcifications and reduces cholesterol), cinacalcet<sup>27,28</sup> (which reduces PTH, calcium and blood phosphates in patients on dialysis with secondary hyperparathyroidism), sodium thiosulfate<sup>29</sup> (an antioxidant and anti-inflammatory that mobilises the calcium deposits in the vessels) and bisphosphonates<sup>30,31</sup> (inhibitors of ectopic calcification formation, with an anti-inflammatory effect) should be used. Vitamin K administration should be considered in cases of deficiency.<sup>32</sup> The use of hyperbaric oxygen therapy<sup>33</sup> (it could be beneficial for distal lesions) and parathyroidectomy in cases of severe hyperparathyroidism is a subject of much debate, because they do not seem to improve the prognosis in these patients.<sup>2</sup>

The prognosis of this disease is very poor, as it shows a mortality rate of up to 60–80%, with calciphylaxis-related sepsis as the most common cause of death,<sup>2,4</sup> as occurred in 64% of our patients. Specifically, proximal lesions have a higher mortality rate than distal lesions ( $p=0.04$ ).<sup>9</sup> In this series, the main risk factors for calciphylaxis-related death were the presence of CKD ( $p=0.03$ ) and hypoalbuminaemia ( $p=0.02$ ).

In addition, it is important to note that patients with normal renal function have an excellent prognosis with regard to calciphylaxis (none of them died due to this reason), compared with patients with CKD (especially renal transplant patients), who have a very high probability of dying within a few months ( $p=0.032$ ).

This study has some important limitations: it is retrospective and single-centre, includes a small number of cases, and there was no comparative analysis with a control group of subjects without calciphylaxis. However, this study does reflect the current reality at the different nephrology centres.

In conclusion, although calciphylaxis is a rare condition, it has a high mortality rate. The patient profile has changed: it is not constrained to uraemic situations, but also occurs in patients with normal functioning renal transplants or in subjects with no kidney disease. Cardiovascular risk factors (diabetes, obesity, peripheral vascular disease, anticoagulation with vitamin K antagonists, steroids) are displacing the classic factors of bone and mineral metabolism. A “risk score” should be established for an early diagnosis, as well as standard treatment. Multicenter studies that enable the treatment of this condition to be standardised are needed.

## Conflicts of interest

The authors have no conflicts of interest to declare.

## REFERENCES

1. Mizobuchi M, Towler D, Slatopolsky E. Vascular calcification: the killer of patients with chronic kidney disease. *J Am Soc Nephrol*. 2009;20:1453-64.
2. Weening RH, Sewell LD, Davis MD, McCarthy JT, Pittelkow MR. Calciphylaxis: natural history, risk factor analysis and outcome. *J Am Acad Dermatol*. 2007;56:569-79.
3. Fernández E. La arteriopatía calcificante urémica (calcifilaxis) en el contexto del síndrome metabólico y la diabetes mellitus. Perspectiva actual. *Nefrología*. 2008;28:20-4.
4. Mazhar AR, Johnson RJ, Gillen D, Stivelman JC, Ryan MJ, Davis CL, et al. Risk factors and mortality associated with calciphylaxis in end-stage renal disease. *Kidney Int*. 2001;60:324-32.
5. Rogers NM, Coates PT. Calcific uremic arteriopathy: an update. *Curr Opin Nephrol Hypertens*. 2008;17:629-34.
6. Mawad HW, Sawaya BP, Sarin R, Malluche HH. Calcific uremic arteriopathy in association with low turnover uremic bone disease. *Clin Nephrol*. 1999;52:160-6.
7. Block GA. Control of serum phosphorus: implications for coronary artery calcification and calcific uremic arteriopathy (calciphylaxis). *Curr Opin Nephrol Hypertens*. 2001;10:741-7.
8. Verdalles Guzmán U, de la Cueva P, García de Vinuesa S, Goicoechea M, Mosse A, López Gómez JM, et al. Calcifilaxis: complicación grave del síndrome cardio-metabólico en pacientes con enfermedad renal crónica terminal (ERCT). *Nefrología*. 2008;28:32-6.
9. Hayasi M, Takamatsu I, Kanno Y, Yoshida T, Abe T, Sato Y. A case-control study of calciphylaxis in Japanese end stage renal disease patients. *Nephrol Dial Transplant*. 2012;27:1580-4.
10. Moe SM, Reslerova M, Ketteler M, O'Neill K, Duan D, Koczman J, et al. Role of calcification inhibitors in the pathogenesis of vascular calcification in chronic kidney disease. *Kidney Int*. 2005;67:2295-304.
11. Westenfeld R, Schäfer C, Krüger T, Haarmann C, Schurgers LJ, Reutelingsperger C, et al. Fetuin A protects against atherosclerotic calcification in CKD. *J Am Soc Nephrol*. 2009;20:1264-2174.
12. Ross EA. Evolution of treatment strategies for calciphylaxis. *Am J Nephrol*. 2011;34:460-7.
13. Baldwin C, Farah M, Leung M, Taylor P, Werb R, Kiaii M, et al. Multi-intervention management of calciphylaxis: a report of 7 cases. *Am J Kidney Dis*. 2011;58:988-91.
14. Russo D, Capuano A, Cozzolino M, Napolitano P, Mosella F, Russo L, et al. Multimodal treatment of calcific uremic arteriopathy (calciphylaxis): a case series. *Clin Kidney J*. 2016;9:108-12.
15. Jovanovich A, Chonchol M. Calcific uremic arteriopathy revisited. *J Am Soc Nephrol*. 2016.
16. Nigwekar SU, Wolf M, Sterns RH, Hix JK. Calciphylaxis from nonuremic causes: a systematic review. *Clin J Am Soc Nephrol*. 2008;3:1139-43.
17. Jeong HS, Dominguez AR. Calciphylaxis: controversies in pathogenesis, diagnosis and treatment. *Am J Med Sci*. 2016;351:217-27.
18. Farah M, Crawford RI, Levin A, Chan Yan C. Calciphylaxis in the current era: emerging 'ironic' features? *Nephrol Dial Transplant*. 2011;26:191-5.
19. Brandenburg VM, Cozzolino M, Mazzaferro S. Calcific uremic arteriopathy: a call for action. *Semin Nephrol*. 2014;6:641-7.
20. Nigwekar SU, Zhao S, Wenger J, Hymes JL, Maddux FW, Thadhani RI, Chan KE. A nationally representative study of calcific uremic arteriopathy risk factors. *J Am Soc Nephrol*. 2016.
21. Drüeke TB, Rostand SG. Progression of vascular calcification in uraemic patients: can it be stopped? *Nephrol Dial Transplant*. 2002;17:1365-8.
22. Brandenburg VM, Kraman R, Rothe H, Kaesler N, Korbiel J, Specht P, et al. Calcific uraemic arteriopathy (calciphylaxis): a data from a large nationwide registry. *Nephrol Dial Transplant*. 2016.
23. Guerra G, Shah RC, Ross EA. Rapid resolution of calciphylaxis with intravenous sodium thiosulfate and continuous venovenous haemofiltration using low calcium replacement fluid: case report. *Nephrol Dial Transplant*. 2005;20:1260-2.
24. Roberto L. Tratamiento de calcifilaxis distal con terapia asociada de sevelamer y bifosfonatos. *Nefrología*. 2009;29:92-3.
25. Wanat KA, Stewart CL, Negoianu D, Rosenbach M. Severe nonuremic calciphylaxis due to hyperphosphatemia resolving with multimodality treatment including phosphate binders. *JAMA Dermatology*. 2014;150:671-3.
26. Salmhofer H, Franzen M, Hitzl W, Koller J, Kreymann B, Fend F, et al. Multimodal treatment of calciphylaxis with sodium thiosulfate, cinacalcet and sevelamer including long term data. *Kidney Blood Press Res*. 2013;37:346-59.
27. Mohammed IA, Sekar V, Bутбуana AJ, Mitra S, Hutchinson AJ. Proximal calciphylaxis treated with calcimimético "cinacalcet". *Nephrol Dial Transplant*. 2008;23:387-9.
28. Floege J, Kubo Y, Floege A, Chertow GM, Parfrey PS. The effect of cinacalcet on calcific uremic arteriopathy events in patients receiving hemodialysis: the EVOLVE trial. *Clin J Am Soc Nephrol*. 2015;10:800-7.
29. Singh RP, Derendorf H, Ross EA. Simulation-based sodium thiosulfate dosing strategies for the treatment of calciphylaxis. *Clin J Am Soc Nephrol*. 2011;6:1155-9.
30. Torregrosa JV, Durán CE, Barros X, Blasco M, Arias M, Cases A, et al. Tratamiento eficaz de la arteriopatía urémica calcificantes con bifosfonatos. *Nefrología*. 2012;32:329-34.
31. Monney P, Nguyen QV, Perroud H, Descombes E. Rapid improvement of calciphylaxis after intravenous pamidronate therapy in a patient with chronic renal failure. *Nephrol Dial Transplant*. 2004;19:2130-2.
32. Westenfeld R, Krueger T, Schlieper G, Cranenburg EC, Magdeleyns EJ, Heidenreich S, et al. Effect of vitamin K2 supplementation on functional vitamin K deficiency in hemodialysis patients: a randomized trial. *Am J Kidney Dis*. 2012;59:186-95.
33. Podymow T, Wherrett C, Burns KD. Hyperbaric oxygen in the treatment of calciphylaxis: a case series. *Nephrol Dial Transplant*. 2001;16:2176-80.