

- Agents Chemother 1984;25:433-7.
2. Shah-Khan F, Scheetz MH, Ghossein C. Biopsy-Proven Acute Tubular Necrosis due to Vancomycin Toxicity. *Int J Nephrol* 2011;2011:436856.
 3. Bunchman TE, Valentini RP, Gardner J, Mottes T, Kudelka T, Maxvold NJ. Treatment of vancomycin overdose using high-efficiency dialysis membranes. *Pediatr Nephrol* 1999;13(9):773-4.
 4. Foote EF, Dreitlein WB, Steward CA, Kapoian T, Walker JA, Sherman RA. Pharmacokinetics of vancomycin administered during high flux hemodialysis. *Clin Nephrol* 1998;50:51-5.
 5. Ulinski T, Deschênes G, Bensman A. Large-pore haemodialysis membranes: an efficient tool for rapid removal of vancomycin after accidental overdose. *Nephrol Dial Transplant* 2005;20(7):1517-8.
 6. Wu CY, Wang JS, Chiou YH, Chen CY, Su YT. Biopsy proven acute tubular necrosis associated with vancomycin in a child: case report and literature review. *Ren Fail* 2007;29(8):1059-61.
 7. Wicklow BA, Ogborn MR, Gibson IW, Blydt-Hansen TD. Biopsy-proven acute tubular necrosis in a child attributed to vancomycin intoxication. *Pediatr Nephrol* 2006;21(8):1194-6.
 8. Sokol H, Vigneau C, Maury E, Guidet B, Offenstadt G. Biopsy-proven anuric acute tubular necrosis associated with vancomycin and one dose of aminoside. *Nephrol Dial Transplant* 2004;19(7):1921-2.
 9. Htike NL, Santoro J, Gilbert B, Elfenbein IB, Teehan G. Biopsy-proven vancomycin-associated interstitial nephritis and acute tubular necrosis. *Clin Exp Nephrol* 2012;16:320-4.
 10. Panzarino VM, Feldstein TJ, Kashtan CE. Charcoal hemoperfusion in a child with vancomycin overdose and chronic renal failure. *Pediatr Nephrol* 1998;12:63-4.

Juan A. Martín-Navarro,
Vladimir Petkov-Stoyanov,
María J. Gutiérrez-Sánchez

Sección de Nefrología. Hospital del Tajo.
 Aranjuez, Madrid.

Correspondencia: Juan A. Martín Navarro
 Sección de Nefrología, Hospital del Tajo,
 Aranjuez, Madrid.
 juanmartinnav@hotmail.com

An atypical case of anti-GBM antibody disease with renal function deterioration from normal to end stage renal disease

Nefrologia 2014;34(5):690-2

doi:10.3265/Nefrologia.pre2014.Jun.12580

Dear Editor,

Anti-glomerular basement membrane (GBM) antibody disease accounts for 20% of all rapidly progressive glomerulonephritis.¹ Occasionally it has been diagnosed in patients with normal renal functions and those patients have favorable renal prognosis. Here,

we report a patient with anti-GBM antibody disease who presented with nephrotic range proteinuria, normal renal function and lack of pulmonary symptoms. Contrary to the previous data in literature; he developed end stage renal disease (ESRD) within three years despite appropriate treatment.

A 23-years-old non-smoker university student male patient presented with minimal bilateral edema in lower extremities that was present for two weeks. He had no gross hematuria, hemoptysis or other pulmonary symptoms. His past medical history was unremarkable. Laboratory evaluation revealed 7200mg/day proteinuria with normal renal functions (serum creatinine: 1mg/dL). Serum albumin

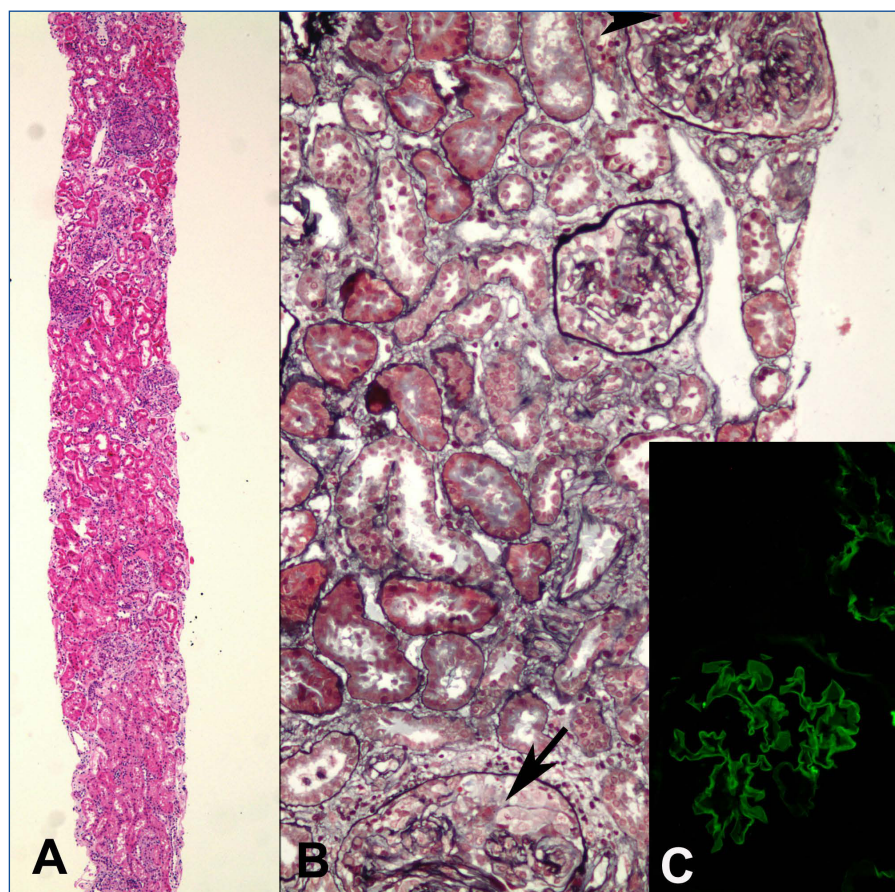


Figure 1. First renal biopsy from the patient.

Large glomeruli are notable with minimal tubulointerstitial alteration (panel A). Higher power shows hypercellular glomeruli with crescents (arrow) and fibrinoid necrosis (arrow-head) (panel B). Linear IgG staining along glomerular basement membranes on immunofluorescence (panel C) (A: H&E x 40; B: PAMS x 200; C: Immunofluorescence, FITC conjugated anti-IgG Ab x 200).

level was 4g/dL. Urinalysis showed 3+ proteinuria with microscopic hematuria. Anti-nuclear and anti-double-stranded DNA antibodies, HIV, hepatitis B and hepatitis C serologies were negative. Complement levels were normal. Renal ultrasonography was normal. Renal biopsy was consistent with anti-GBM antibody disease with diffuse linear IgG staining along the GBM, diffuse endocapillary proliferation and cellular/fibrocellular crescent formation in 40% of glomeruli (Figure 1). Numerous glomeruli showed segmental scarring. As soon as the diagnosis was confirmed with positive anti-GBM antibody in serum, plasmapheresis and immunosuppressive treatment was started. Fourteen plasmapheresis

sessions were performed until antibodies disappeared. After three days of intravenous pulse methylprednisolone treatment (500mg/day), he was maintained on oral prednisolone (started with 1mg/kg/day and tapered slowly) and monthly intravenous 750mg cyclophosphamide infusions. After twelve intravenous cyclophosphamide treatments, serum creatinine was 1.3mg/dL, albumin was 3.1g/dL and 24-h protein excretion was 4g/day. Thereafter he was maintained on low dose prednisolone (5mg/day) and azathioprine (100mg/day) combination. However under this treatment his renal functions deteriorated and a second biopsy had to be performed after 18 months when creatinine level increased to 2mg/dL and proteinuria

to 6g/day. Although serum anti-GBM antibody and ANCA were negative at that time, histomorphologic examination demonstrated ongoing active disease with crescents, linear immunofluorescent staining for IgG on GBM's and significant chronic injury (Figure 2). Pulse methylprednisolone followed by oral prednisolone, cyclosporine and mycophenolate mofetil could not prevent further deterioration of renal functions. Furthermore he suffered from a herpes-zoster infection and had to struggle with intracranial abscess caused by actinomyces. Immunosuppressive treatment was stopped and regular hemodialysis treatment was started on the 27th month after first diagnosis.

This patient with anti-GBM antibody disease presented with nephrotic range proteinuria with normal renal functions. In spite of normal renal function at presentation, ESRD could not be prevented with intensive treatment.

The first interesting point about the patient is the clinical and laboratory data at the time of diagnosis. He had an unusual presentation with normal renal function and absence of pulmonary symptoms, and the indication of the renal biopsy was nephrotic range proteinuria. Isolated nephrotic syndrome is not a classical feature of anti-GBM antibody disease although it may occasionally accompany disturbed renal function. The cause of nephrotic syndrome in these patients may be a co-existing glomerulonephritis which is membranous glomerulonephritis in most of the cases.² Minimal change disease,³ IgA nephropathy⁴ or membranoproliferative glomerulonephritis⁵ may also be associated with anti-GBM antibody disease. There was no accompanying glomerular pathology in this patient based on light microscopic and immunofluorescence studies. Although electron microscopy could not be performed, unresponsiveness of the proteinuria to the steroid and cyclophosphamide decreases the possibility of accompanying minimal change disease.

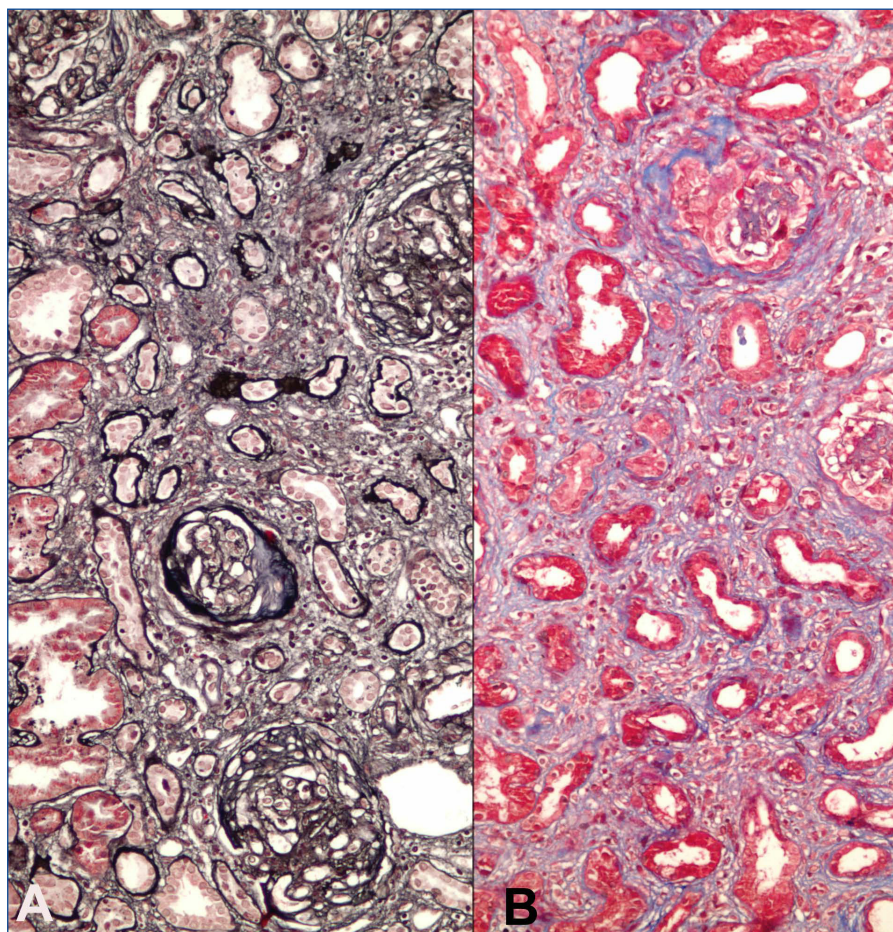


Figure 2. Second kidney biopsy from the patient.

Significant chronic injury with numerous globally sclerotic glomeruli and interstitial fibrosis / tubular atrophy (panel A). Some glomeruli retain crescents showing ongoing activity (panel B). (A: PAMS x 200; B: Masson's trichrome x 200).

Another interesting point of this case is the progressive course of the disease despite normal renal function at the beginning. It is known that prognosis of this disease is intimately dependent on the initial creatinine level.⁶ Patients with anti-GBM antibody disease with normal renal function at presentation uniformly showed good renal prognosis.⁷ This patient had progressive deterioration in renal functions despite intensive immunosuppressive treatment.

Unusual presentation and course in this patient is difficult to explain. Several hypotheses have been proposed for atypical presentations in anti-GBM antibody disease. The disease is classically characterized by circulating autoantibodies against non-collagenous domain of alpha-3 chain of type-IV collagen.⁸ It has been suggested that presence of antibodies against non-collagenous domains of alpha-1 and alpha-4 chains of type-IV collagen may result in differing presentations of anti-GBM antibody disease.⁹ Another possible mechanism to explain the atypical presentation of anti-GBM antibody disease is involvement by the different IgG subclasses. It was shown that anti-GBM antibody is most likely IgG1 or IgG4, and only IgG1 can activate complement.¹⁰

In conclusion anti-GBM antibody disease may present with normal renal functions and nephrotic range proteinuria and appropriate treatment may not prevent ESRD in these patients.

Conflict of interest

The authors declare that they have no conflicts of interest related to the contents of this article.

1. McLeish KR, Yum MN, Luft FC. Rapidly progressive glomerulonephritis in adults: clinical and histologic correlations. *Clin Nephrol* 1978;10(2):43-50.
2. Troxell ML, Saxena AB, Kambham N. Concurrent anti-glomerular basement membrane disease and membranous glomerulonephritis: a case report and literature review. *Clin Nephrol* 2006;66(2):120-7.
3. Okafor CC, Balogun RA, Bourne DT, Alhussain TO, Abdel-Rahman EM. An unusual case of anti-glomerular basement membrane disease presenting with nephrotic syndrome. *Int Urol Nephrol* 2011;43(4):1249-53.
4. Trpkov K, Abdulkareem F, Jim K, Solez K. Recurrence of anti-GBM antibody disease twelve years after transplantation associated with de novo IgA nephropathy. *Clin Nephrol* 1998;49(2):124-8.
5. Deodhar HA, Marshall RJ, Sivathondan Y, Barnes JN. Recurrence of Goodpasture's syndrome associated with mesangiocapillary glomerulonephritis. *Nephrol Dial Transplant* 1994;9(1):72-5.
6. Levy JB, Turner AN, Rees AJ, Pusey CD. Long-term outcome of anti-glomerular basement membrane antibody disease treated with plasma exchange and immunosuppression. *Ann Intern Med* 2001;134(11):1033-42.
7. Ang C, Savige J, Dawborn J, Miach P, Heale W, Clarke B, et al. Anti-glomerular

basement membrane (GBM)-antibody-mediated disease with normal renal function. *Nephrol Dial Transplant* 1998;13(4):935-9.

8. Kalluri R, Wilson CB, Weber M, Gunwar S, Chonko AM, Neilson EG, et al. Identification of the alpha 3 chain of type IV collagen as the common autoantigen in anti-basement membrane disease and Goodpasture syndrome. *J Am Soc Nephrol* 1995;6(4):1178-85.
9. Hellmark T, Segelmark M, Unger C, Burkhardt H, Saus J, Wieslander J. Identification of a clinically relevant immunodominant region of collagen IV in Goodpasture disease. *Kidney Int* 1999;55(3):936-44.
10. Hellmark T, Brunmark C, Trojnar J, Wieslander J. Epitope mapping of anti-glomerular basement membrane (GBM) antibodies with synthetic peptides. *Clin Exp Immunol* 1996;105(3):504-10.

Tolga Yildirim¹, Dilek Ertoy-Baydar², Ercan Turkmen¹, Rahmi Yilmaz¹, Yunus Erdem¹

¹ Department of Nephrology, Faculty of Medicine, Hacettepe University, Ankara (Turkey).

² Department of Pathology, Faculty of Medicine, Hacettepe University, Ankara (Turkey).

Correspondence: Tolga Yildirim

Department of Nephrology, Faculty of Medicine, Hacettepe University, Hacettepe Üniversitesi Tıp Fakültesi Nefroloji Klini i Sıhhiye Ankara, 06100. Ankara, Turkey. tolga.yildirim@hacettepe.edu.tr tolgaylr@gmail.com
