



Original article

Differences in dialysis modality choice between immigrant and native populations in Barcelona, Spain



María Dolores Arenas-Jiménez^{a,*}, Jose Luis Fernandez-Martin^{b,c},
Isabel Galcerán Herrera^d, Marisol Fernández-Chamarro^d, Guillermo Pedreira-Robles^d,
Silvia Collado Nieto^d, Julia Farrera Núñez^d, Eva Rodríguez García^d,
Alicia Moreno Rodríguez^e, Laura Morro Fernández^e, Marta Crespo Barrio^d,
Julio Pascual Santos^{d,f}

^a Fundación Renal, Madrid, Spain

^b UGC Metabolismo Óseo, Instituto de Investigación Sanitaria del Principado de Asturias (ISPA), Asturias, Spain

^c REDinREN-ISCI (RD16/0009/0017) y RICORS2040 (Kidney Disease) (RD21/0005/0019), Madrid, Spain

^d Servicio de Nefrología, Hospital del Mar, Instituto Hospital del Mar de Investigaciones Médicas, RD16/0009/0013 (ISCI FEDER REDinREN), Barcelona, Spain

^e Servicio de Trabajo Social, Hospital del Mar, Instituto Hospital del Mar de Investigaciones Médicas, Barcelona, Spain

^f Servicio de Nefrología, Hospital Universitario 12 de Octubre, Madrid, Spain

ARTICLE INFO

Article history:

Received 3 November 2023

Accepted 15 January 2024

Available online 15 January 2025

Keywords:

Advanced chronic kidney disease

Socioeconomic status

Demographic factors

Renal replacement therapy

Peritoneal dialysis

Conservative care

Hemodialysis

Language barrier

Social determinants of health

Immigration

ABSTRACT

Few studies have analyzed the freedom to choose their renal replacement treatment (RRT) modality in Spain. In a total of 673 patients with ACKD (stage 4 and 5) seen at the outpatient ACKD clinic of Hospital del Mar, Barcelona, Catalonia (Spain) from 2009 to 2020, we retrospectively compared immigrant and Spanish patients in order to analyze the impact of migration on RRT decision-making and its subsequent evolution in advanced CKD (ACKD) consultation and identifies the social and economic needs of this population. One hundred thirteen (16.8%) patients were immigrants and 560 were Spanish (83.2%). Migrants more frequently chose HD at a center (79.5%) than PD (12.5%) compared to Spaniards (HD 55.5% and 25% PD) despite being younger and more independent in basic and instrumental activities of daily living. Immigrant patients started RRT with lower eGFR (8.1 vs. 9.1 mL/min/1.73 m³) and after a shorter follow-up time in the ACKD consultation than the Spaniards (22 vs. 32 months). The language barrier was associated with a greater choice of center-based HD and active employment status favored the choice of PD. Spanish patients had a significantly higher relative risk of mortality compared with immigrant patients (HR = 3.27[95%CI:1.17–9.17], $p=0.024$). However, after adjustment by age, this increased relative risk of mortality disappeared (HR 1.99[0.69–5.76], $p=0.206$). Almost 60% individuals were not linked to social

DOI of original article:

<https://doi.org/10.1016/j.nefro.2024.01.003>.

* Corresponding author.

E-mail address: mdarenas@friat.es (M.D. Arenas-Jiménez).

2013-2514/© 2024 Published by Elsevier España, S.L.U. on behalf of Sociedad Española de Nefrología. This is an open access article under the CC BY-NC-ND license (<http://creativecommons.org/licenses/by-nc-nd/4.0/>).

services. In conclusion, most immigrants in Barcelona choose center-HD versus DP despite being younger and more independent in basic and instrumental activities of daily living and being in a better condition than Spanish patients. Considering the socioeconomic and cultural needs of the immigrant population we serve is necessary to effectively reduce health inequities. Keywords: advanced chronic kidney disease, socioeconomic status, demographic factors, shared decision making, renal replacement therapy, peritoneal dialysis, conservative care, hemodialysis, renal transplantation, language barrier, social determinants of health, immigration, social determinants of health.

© 2024 Published by Elsevier España, S.L.U. on behalf of Sociedad Española de Nefrología.

This is an open access article under the CC BY-NC-ND license

(<http://creativecommons.org/licenses/by-nc-nd/4.0/>).

Diferencias en la elección de la modalidad de diálisis entre inmigrantes y españoles en Barcelona, España

R E S U M E N

Palabras clave:

Enfermedad renal crónica avanzada
Estatus socioeconómico
Factores demográficos
Terapia de reemplazo renal
Diálisis peritoneal
Cuidados conservadores
Hemodiálisis
Barrera del idioma
Determinantes sociales de la salud
Inmigración

Son pocos los estudios que han analizado la libertad de elección de la modalidad de tratamiento renal sustitutivo (TRS) en España. En un total de 673 pacientes con Enfermedad renal crónica avanzada (ERCA) (estadios 4 y 5) atendidos en la consulta externa específica del Hospital del Mar, Barcelona, Cataluña (España) de 2009 a 2020, comparamos retrospectivamente pacientes inmigrantes y españoles para analizar el impacto de la migración en la toma de decisiones del TRS y su posterior evolución en la consulta de ERC avanzada (ACKD) e identifica las necesidades sociales y económicas de esta población. Ciento trece pacientes (16,8%) eran inmigrantes y 560 españoles (83,2%). Los inmigrantes eligen con mayor frecuencia la HD en un centro (79,5%) que la DP (12,5%) respecto a los españoles (HD 55,5% y 25% DP) a pesar de ser más jóvenes y más independientes en las actividades básicas e instrumentales de la vida diaria. Los pacientes inmigrantes iniciaron TRS con un FGe más bajo (8,1 vs. 9,1 ml/min/1,73 m²) y tras un tiempo de seguimiento en la consulta de ERCA más corto que los españoles (22 vs. 32 meses). La barrera del idioma se asoció con una mayor elección de HD en centros y el estatus laboral activo favoreció la elección de DP. Los pacientes españoles tuvieron un riesgo relativo de mortalidad significativamente mayor en comparación con los pacientes inmigrantes (HR = 3,27[IC95%:1,17–9,17], p = 0,024). Sin embargo, después del ajuste por edad, este mayor riesgo relativo de mortalidad desapareció (HR 1,99[0,69–5,76], p = 0,206). Casi el 60% de las personas no estaban vinculadas a los servicios sociales. En conclusión, la mayoría de los inmigrantes en Barcelona eligen el centro-HD frente a DP a pesar de ser más jóvenes y más independientes en las actividades básicas e instrumentales de la vida diaria y estar en mejores condiciones que los pacientes españoles. Es necesario considerar las necesidades socioeconómicas y culturales de la población inmigrante a la que servimos para reducir eficazmente las inequidades en salud.

© 2024 Publicado por Elsevier España, S.L.U. en nombre de Sociedad Española de Nefrología. Este es un artículo Open Access bajo la licencia CC BY-NC-ND

(<http://creativecommons.org/licenses/by-nc-nd/4.0/>).

Introduction

According to the International Organization for Migration, international migration is expected to increase significantly, potentially reaching 405 million people by 2050.¹ Globalization, economic pressures, climate change, environmental degradation, political violence and human rights violations are the main reasons driving of this movement.^{1,2}

In July 2023, the population in Spain was 48.3 million people, of which 8.5 million (17.5%) were born abroad.³ In recent years, immigrants represent the majority of the new population in Spain.

Migration has enormous consequences on the daily lives of people who abandon their places of origin and is nega-

tively associated with health risks and adverse outcomes.^{4,5} A worsening of the health of these subjects has been observed over time and between generations.⁶ The rapid growth of international migration and their heterogeneity pose a major challenge for public health equity policies, which require an analysis by health services of the new socio-demographic reality to avoid the danger of inequity in this area.⁷

Sociodemographic, economic and cultural determinants explain more than 75% of health outcomes.⁸ Migration should be positioned as a social determinant in its own right.⁹

Chronic kidney disease (CKD) is a progressive disease that affects more than 10% of the world's population.¹⁰ It is more prevalent among the elderly, women and racial minorities, especially in low- and middle-income countries.¹⁰ It is not

surprising that this entity and its associated morbidities particularly affect to the immigrant population.¹¹

Few studies have analyzed the troubles and outcomes of immigrant patients with CKD in Spain^{12,13} and no research has been done on the preferences of this population with regard to the modality of renal replacement therapy (RRT).

The main objective of this study was to analyze the impact of being immigrant on RRT decision making and its subsequent evolution in the advanced CKD (ACKD) clinic. Particularly, the present work investigates the differences between country of origin or language and identifies the social and economic needs of this population.

Methods

Patients and design

Retrospective cross-sectional observational study conducted in a group of 673 patients with ACKD (stages 4 and 5, estimated glomerular filtration rate [eGFR] < 30 mL/min/1.73 m²) followed at the ACKD outpatient clinic of the Hospital del Mar, Barcelona, Catalonia (Spain) from 2009 to 2020. All participants went through the same process. Patient inclusion in the ACKD consultation began with a nursing visit, which started the therapeutic decision-making process,¹⁴ and consisted of three consecutive sessions corresponding to three phases. In the first, the subject's values and preferences were explored by means of value cards labeled "important, somewhat important and very important", from which he/she chose two "very important" (for example, if a patient selected "being independent" and "fear of blood and needles" his/her most valued possible treatment option could be peritoneal dialysis [PD]). In a second stage, information on the different options available was given with audiovisual material. Finally, in a third deliberative stage, the individual decided on the RRT modality if he or she felt ready for it. Depending on their circumstances, participants could choose between different RRT options: hemodialysis (HD), PD, renal transplantation (RT) and conservative care (CC). At that time, our center did not have the possibility to offer home HD.

If the patient opted for PD, he/she was sent to a specific PD clinic with the responsible medical and nursing staff; to perform a clinical assessment to decide if the option was feasible. Absolute contraindications for PD were: the existence of moderate/severe mental deficiency without family or institutionalized support, psychosis, active severe depression or severe inflammatory bowel disease, active diverticulitis, intestinal ischemia or abdominal abscess. The remaining patients selected HD, living donor renal transplantation (LDKT) and conservative treatment (CT) remained in the ACKD clinic.

A comparative analysis was performed between immigrant and Spanish patients in relation to their choice of RRT and their subsequent evolution. A subanalysis of immigrants who chose HD or PD was performed, including the country of origin and language barrier, as well as the economic and social needs of this population.

The social workers accessed by telephone those immigrants of the ERCA clinic to obtain information about their social and economic situation.

Variables

Demographic and clinical data were obtained from the medical records. The variables recorded were: age, sex, etiology of CKD (glomerular and diabetic nephropathy), mean follow-up time of ACKD (months), level of dependence in basic activities of daily living (ADL), level of dependence in instrumental activities of daily living (IADL), socioeconomic level according to the mean income of the districts of the primary care centers, Spanish nationality vs. foreign nationality, country of origin, language barrier, eGFR at the start of the ACKD consultation, at the start of the selected RRT, chosen RRT (PD, HD, HT) or live transplant, and whether it was potential transplant patient in the opinion of the nephrologist.

Throughout the evolution in the ACKD follow up, we recorded death, the start of RRT or loss to follow-up and also the type of RRT and the causes that led to its initiation (eGFR < 7 mL/min/1.73 m², acute worsening of CKD, uremic symptoms or congestive heart failure), whether the RRT had been approached as emergency or it was programmed and whether HD was performed with catheter or with a functioning arteriovenous fistula. All patients who died in ESRD or were lost to follow-up were excluded from the final analyses.

Measuring instruments

Dependence for basic activities of daily living (ADL): the Barthel scale

The Barthel scale¹³ explores the degree of independence for ADLs. Those included in the original index are 10: eating, moving from chair and bed, personal grooming, going to the toilet, bathing/showering, moving (walking on a smooth surface or in a wheelchair), going up/down stairs, dressing, stool and urine control. The values of the Barthel scale ranges from 0 to 100, with five-point intervals for the original version. The closer to a score of 0, the more dependent he or she is; the closer it is to 100, the more independent. This information is obtained directly from the individual or his or her primary caregiver.¹⁵

Dependence on instrumental activities of daily living: the Lawton and Brody scale

The Lawton and Brody scale¹⁶ explores independence in using the telephone, shopping, preparation of meals, cleaning, washing, traveling, taking medications and managing finances. It assigns them a numerical value 1 (independent) or 0 (dependent).

The final score is the sum of the value of all responses. It ranges from 0 (maximum dependence) to 8 (total independence). This information is obtained by asking directly to the individual or his or her primary caregiver.

Assessment of the socioeconomic status

Socioeconomic status was extrapolated according to the residence and district of the primary care center to which the patients belonged. The most recent information (2017) on the

average income per district was extracted from official data, provided by the Barcelona City Council.¹⁷

The estimate used was the Family available Income per capita, which considers the income accessible for consumption and accumulated savings per person.

Subsequently, and with the aim of simplifying the analysis, we summarized and grouped the scores according to the socioeconomic level of the district in which they lived.¹⁸ In this way, the patients were classified into three socioeconomic level groups: low, medium-low and medium-high.

Sub analysis among immigrants

Social workers retrospectively collected by telephone interview the social and economic situation of immigrants from whom data could be obtained. Some patients were lost for this analysis because information could not be collected (some had returned to their countries or could not be located). In others it was not possible to obtain complete information on some aspects.

The variables recorded were the following: housing (adequate vs. inadequate), administrative situation of the country (regular vs. irregular), economic situation (receiving between the minimum interprofessional wage [MIW] and 1.5 times or more than 1.5 times the MIW), from MIW to minimum contributory retirement income (MCRI), from MCRI to minimum noncontributory pension (MNCRI, no income); type of support (family, formal, institutions, informal (friends, neighbors, etc.) or none.

Ethics

This study followed the regulations of the European Union law on data protection and privacy for all persons within the European Union (GDPR/2018) and the Declaration of Helsinki on Ethical Principles for Medical Research Involving Human Subjects.

Statistical analysis

Numerical variables were described using the mean and standard deviation (SD), whereas categorical variables were defined with the number and percentage of subjects. Between-group comparisons were performed with Student's t-test for continuous variables and X² or Fisher's exact (if expected counts were less than 5) for categorical variables. Kaplan-Meier estimation was used to evaluate over time survival in immigrant and Spanish populations. The log-rank test was used to calculate statistical differences between groups. Cox proportional hazards regression models were used to evaluate the relative risk of mortality between Spanish and immigrant patients from the onset of ACKD to the end of follow-up and from the end of follow-up to the date of definitive discharge from ACKD. The risk indices were estimated unadjusted and adjusted for the parameters: age, sex, and both together. All statistical analyses were performed using the statistical package R software version 4.2.2 (R Foundation for Statistical Computing, Vienna, Austria).

Results

Study population

A total of 673 patients with CKD stage 4 or 5 were seen in the ACKD clinic during the study period. There were 113 (16.8%) immigrants and 560 were from Spain (83.2%). The most frequent countries of origin of this population in this hospital in Barcelona were non-European countries: Pakistan (29%), Philippines (20.9%) and different Latin American nations (22.7%) followed by North Africa (11%).

The characteristics of immigrant and Spanish patients were compared at the time of decision making and incorporation into the ACKD clinic (Table 1), and during the follow-up thereafter this and at the initiation of RRT (Table 2).

Comparison between immigrant and Spanish patients with advanced chronic kidney disease at the time of decision making and initiation in the ACKD clinic

Immigrant patients were significantly younger (57.1 vs. 72.5 years) and independent than Spaniards, lived more frequently in districts of low socioeconomic status (55.4 vs. 27.5%). They had a higher proportion of glomerular disease (15 vs. 6.8%), were more transplantable as per the judgment of the nephrologist (79.5 vs. 41.8%), and joined the ACKD clinic with lower eGFR (19 vs. 21 mL/min/1.73 m³). Regarding RRT options, immigrants more frequently chose HD at a center (79.5%) than PD (12.5%) as compared to Spaniards (55.5% HD and 25% PD) (Table 1).

Comparison between immigrant and Spanish patients with advanced chronic kidney disease at the time of initiating renal replacement therapy and their evolution

Regarding subsequent follow-up in the ACKD consultation and at the start of RRT (Table 2), immigrant patients started RRT with lower eGFR (8.1 vs. 9.1 mL/min/1.73 m³) and after a shorter time of follow-up time than Spaniards (22 vs. 32 months). Death was more frequent in Spaniards (44.7%) than in immigrants (12.4%) and loss to follow-up was higher in the immigrants (12.4%) than in Spaniards (4.8%). After a median follow-up of 18 months (interquartile range [IQR] 8.1-35.1), immigrant patients had better survival than Spaniards (82.2 vs. 45.4%, log-rank = 0.01). Unadjusted Cox regression analysis revealed that the spaniards had a significantly higher relative risk of mortality as compared with immigrants, both at the end of ACKD follow-up (hazard ratio [HR] = 2.03 [confidence interval {IC} 95%: 1.13-3.64], p = 0.018) and at the time of definitive discharge (HR = 3.27 [95% CI: 1.17-9.17], p = 0.024). After adjustment for age, this higher relative risk of mortality disappeared, both at the end of ACKD follow-up (HR = 1.08 [95% CI: 0.59-1.96], p = 0.807) and at the time of definitive discharge (HR = 1.99 [95% CI: 0.69-5.76], p = 0.206) (Fig. 1).

Descriptive analysis of immigrant patients according to their choice of dialysis

The characteristics of the 103 immigrant patients who could undergo a complete study by social workers are shown in Table 3. Of these, the majority chose HD in a center (86%) vs.

Table 1 – Comparison between immigrant and Spanish population at the time of decision making and start of ACKD clinic.

n	Total 673	Immigrants 113	Spaniards 560	p	Missing values
Age (mean [SD])	69.9 (14.1)	57.1 (15.2)	72.5 (12.3)	<0.001	1
Male (%)	419 (62.3)	75 (66.4)	344 (61.4)	0.378	0
Glomerular Nephropathy (%)	55 (8.2)	17 (15.0)	38 (6.8)	0.006	
Diabetic Nephropathy (%)	149 (22.1)	29 (25.7)	120 (21.4)	0.387	0
Estimated Glomerular Filtration Rate (mean [SD]) mL/m/1.73 m ²	20.9 (6.9)	19.1 (7.7)	21.3 (6.6)	0.002	0
Dependence on instrumental activities of daily living (mean [SD])	6.0 (2.1)	6.8 (1.9)	5.8 (2.2)	<0.001	63
Dependence on basic activities of daily living (mean [SD])	91.8 (13.3)	96.7 (7.4)	90.8 (14.0)	<0.001	64
Socioeconomic level (%)				<0.001	0
Low (%)	216 (32.1)	63 (55.8)	153 (27.3)		
Intermediate (%)	175 (26.0)	19 (16.8)	156 (27.9)		
High (%)	144 (21.4)	10 (8.8)	134 (23.9)		
Outside area (not valuable)	138 (20.5)	21(18.6)	117 (20.9)		
Choice of renal replacement therapy (%)				<0.001	1
Peritoneal Dialysis	156 (23.2)	14 (12.5)	142 (25.4)		
Hemodialysis	400 (59.5)	90 (79.6)	310 (55.5)		
Conservative Treatment	113 (16.8)	6 (5.4)	107 (19.1)		
Transplant (from donor)	3 (0.4)	3 (2.7)	0 (0.0)		
Suitable for transplant (%)	322 (48.2)	89 (78.8)	232 (42)	<0.001	5

SD: Standard Deviation; ACKD: Advanced Chronic Kidney Disease.

Table 2 – Comparison between the immigrant and Spanish population during the course of the consultation for advanced chronic kidney disease (ACKD) and at the time of initiation of renal replacement therapy (RRT).

n	Total 673	Immigrants 113	Spaniards 560	p
Mean follow-up time in ACKD clinic (mean [SD]) -months	30.4 (29.0)	22.9 (26.6)	31.9 (29.2)	0.002
eGFR FGe (mean [SD]) mL/m/1.73 m ²	9.2 (3.9)	8.1 (2.9)	9.5 (4.2)	0.010
Dropout from ACKD clinic (%)	499 (74.1)	90 (79.6)	409 (73.0)	0.178
Cause of dropout from ACKD clinic (%)				<0.001
Death	196 (39)	12(13.3)	184 (44.6)	
Start of RRT	276 (54.9)	67 (75.3)	209 (50.5)	
Lost of follow up	32 (6.4)	11(12.2)	21(5.1)	
Type of RRT				0.125
HD in center	199 (72.5)	53 (79.1)	146 (69.9)	
Peritoneal Dialysis	52 (18.8)	7 (10.4)	45 (21.5)	
Transplant	25(9.1)	7 (10.4)	18 (8.6)	
Urgent start of RRT (%)	67 (24.6)	13 (19.4)	54 (26.3)	0.327
Hospital admission at the initiation of RRT (%)	60 (25.3)	13 (22.4)	47 (26.3)	0.681
Type of vascular Access at the initiation of HD				0.077
AVF	159 (79.5)	38 (71.7)	121 (82.3)	
CVC	41 (20.5)	15 (28.3)	147 (73.5)	
AVF performed at the start of HD%	164 (82)	40 (75.5)	124 (84.4)	0.110
CVC permanent (%)	21 (10.5)	5 (9.4)	16 (10.9)	0.500
Cause of starting RRT (%)				0.144
Acute worsening of renal function	14 (5.2)	2 (3.0)	12 (5.9)	
eGFR < 7 mL/min/1.73 m ²	140 (51.7)	35 (52.2)	105 (51.5)	
Congestive Heart Failure	66 (24.4)	12 (17.9)	54 (26.5)	
Uremic Symptoms	51 (18.8)	18 (26.9)	33 (16.2)	
Lost of follow from the study (%)	274(40.7)	26 (23)	248 (44.3)	<0.001
Death	242 (36.0)	16 (14.2)	226 (40.4)	<0.001

CVC: central venous catheter; SD: standard deviation; AVF: Arteriovenous fistula; eGFR: estimated glomerular filtration rate; HD: hemodialysis.

PD (13.5%). The factors associated with the choice of technique were: baseline nephropathy (diabetic nephropathy more frequently opted for HD in centers), degree of dependence on IADLs (more independent patients chose PD), socioeconomic level of the health district (if it was low, they selected more HD in centers and, if it was high, more decided PD), country of origin (South American patients opted for PD and Filipinos

and/or Pakistanis mostly chose HD in centers). Finally, the language barrier was related to a greater choice of HD and active employment status favored PD. Regarding the social needs detected, almost 60% of the people were not linked to social services, 10% had no social support, 31.6% had no resources or earned less than 400 euros/month, 78% were unemployed and 27.4% did not have reasonable housing.

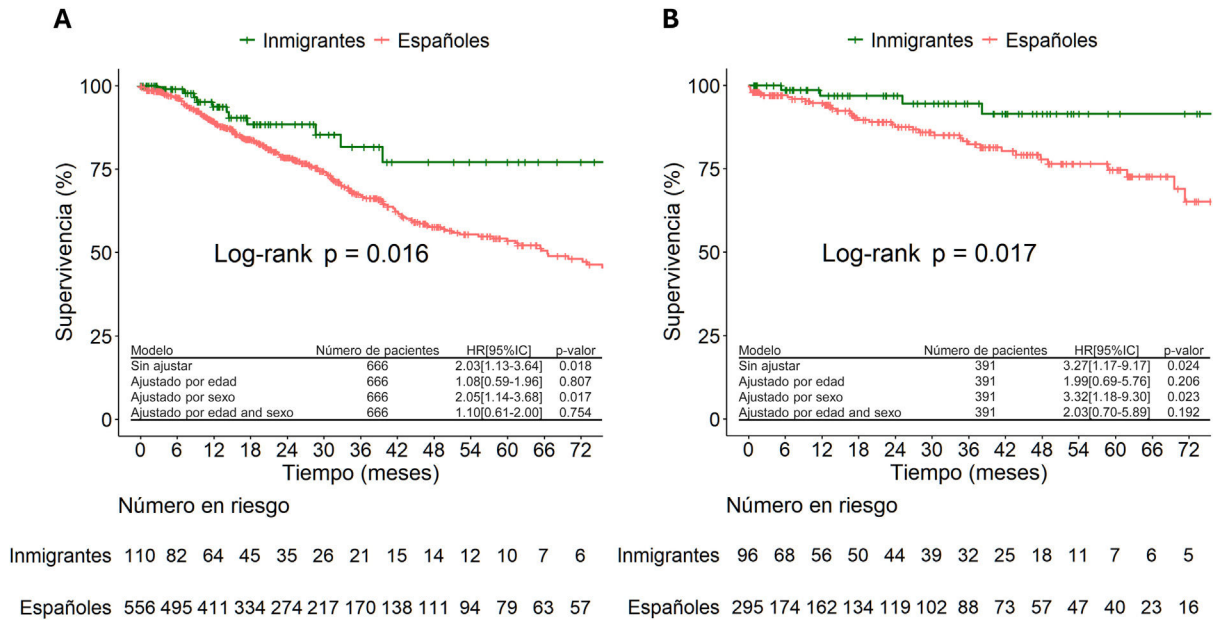


Figure 1 – Univariate estimate of patient survival according to Kaplan-Meier comparing Spanish and foreign populations, and results of the Cox regression analysis of the unadjusted relative risk of mortality and adjusted by the parameters age, sex and both (time on RRT, all patients).

A) Results from the start of ACKD clinic to the end of follow-up.

B) Results from the end of ACKD follow-up to the date of definitive discharge.

ACKD: advanced chronic kidney disease; RRT: renal replacement therapy.

Initiation of dialysis in immigrant patients

67 immigrant patients started RRT during follow-up (13 started urgently and 54 started on a scheduled basis) (Table 2). No differences were found regarding country of origin (24 from Pakistan and associates [35.8%]; six from North Africa [9.0%]; 12 from South America [17.9%]; 11 from the Philippines [16.4%]; nine from Europe [13.4%]; five from others countries [7.5%]; $p = 0.43$) or language barrier (27 [40.3%]; $p = 0.43$). Among immigrant patients who opted for HD (53), those with a language barrier (25) were more likely to initiate HD with a central venous catheter (CVC) (5 [20.0%]) than those who spoke and understood Spanish (0 [0%]; $p < 0.04$).

Discussion

The main finding of the present study is that there are significant differences in the choice of dialysis technique between immigrants and Spaniards renal patients. The majority of immigrants opted for in-center HD vs. PD despite satisfying the requirements generally associated with the choice of the home technique: being younger and more independent in ADLs and IADLs, and being in a better condition to be transplanted than Spaniards. From this, it can be deduced that there must be other reasons linked to migration that influence decision making in ACKD beyond the physical conditions of the patients.

As in this study, other publications have also shown that immigrant patients from developing countries are different from the native population, for example, due to younger age, etiology of renal failure (more frequently glomerular), late

remission (lower eGFR in immigrants on arrival at the ACKD clinic and at the start of RRT), and more frequent loss of follow-up in the clinic due to trips of patients to visit their countries of origin.¹⁹

In our study, the probability of immigrants initiating PD was significantly lower than that of native Spaniards, in contrast to other studies carried out in Canada in which, after controlling for sociodemographic data and comorbidities, East Asians and Indo-Asians were more likely to opt for PD than the white native patients.²⁰ In our work, subjects with a language barrier who lived in a district of associated to low socioeconomic status, such as Filipinos or Pakistanis, were more likely to choose HD in a center than PD. In contrast, immigrants from South American countries without a language barrier were the most likely to choose PD than HD.

In Spain, currently it is not known the actual percentage of patients immigrants followed in nephrology clinics, undergoing dialysis or kidney transplants. The fact is that this variable is not usually included in CKD registries. In the present study, 16% of all patients seen in the CKD clinic throughout 11 years were immigrants and the most frequent countries of origin were not from the European Union. Considering that the in Cataluña the adult population is 6.5 million people, 15.8% are from another region and it is the second autonomous community in number of immigrants, after Madrid, which is the first²¹; thus the number of immigrant patients seen in nephrology clinics does not seem to be insignificant. The only available data is from a cross-sectional study of the HD population in Madrid in November 2003, in which the percentage of immigrants was 9.3%,¹² which is lower than that found in our advanced CKD clinic in Barcelona, also taking

Table 3 – Characteristics of immigrant patients according to the technique of choice.

n	Total 103	Hemodialysis 89	Peritoneal dialysis 14	p
Age (mean [SD]) years	56.6 (15.1)	57.5 (14.1)	51.0 (20.4)	0.134
Male sex (%)	69 (67.0)	62 (69.7)	7 (5.0)	0.251
Glomerular nephropathy (%)	16 (15.5)	11 (12.4)	5 (35.7)	0.065
Diabetic nephropathy (%)	29 (28.2)	29 (32.6)	0 (0.0)	0.028
Estimated glomerular filtration rate (mean [SD]) mL/m/1.73 m ²	18.8 (6.8)	18.6 (6.6)	20.1 (7.8)	0.451
Dependency on instrumental activities of daily living (mean [SD])	6.8 (1.9)	6.6 (1.9)	7.8 (0.6)	0.037
Dependency on basic activities of daily living (mean [SD])	97.0 (7.2)	96.6 (7.7)	99.7 (1.4)	0.149
Country of origin (%)				0.001
Pakistan and partners	31 (30.1)	31 (34.8)	0 (0.0)	
North Africa	10 (9.7)	9 (10.1)	1 (7.1)	
South and Central America	24 (23.3)	15 (16.9)	9 (64.3)	
Philippines	20 (19.4)	19 (21.3)	1 (7.1)	
Europe	11 (10.7)	8 (9.0)	3 (21.4)	
Others	7 (6.8)	7 (7.9)	0 (0.0)	
Language barrier (%)	43 (41.7)	42 (47.2)	1 (7.1)	0.011
Suitable for transplant (%)	83 (80.6)	72 (80.8)	11 (78.6)	1.000
Living donor option (%)	8 (7.8)	1(1.1)	7 (50.0)	<0.001
Socioeconomic status (%)	83	74	9	<0.001
Low (%)	55 (66.3)	54 (73.0)	1 (11.1)	
Intermediate (%)	18 (21.7)	14 (18.9)	4 (44.4)	
High (%)	10 (12.0)	6 (8.1)	4 (4.4)	
Adequate housing (%)	58 (72.5)	49 (72.1)	9 (75.0)	1.000
Adequate administrative situation (%)	74 (97.4)	64 (97.0)	10 (100.0)	1.000
Active worker (%)	17 (23.3)	11 (17.5)	6 (60.0)	0.011
Economic remuneration (%) n	71	61	10	0.068
No income	22 (31.0)	20 (32.8)	2 (20.0)	
Minimum interprofessional wage (MIW) at 1.5 MIW	14 (19.7)	9 (14.8)	5 (50.0)	
>1.5 times the MIW	3 (4.2)	3 (4.9)	3 (30.0)	
From MIW to minimum noncontributory pension (MNCRI)	18 (25.4)	15 (24.6)	0 (0.0)	
From MNCRI to minimum contributive pension (MCRI)	14 (19.7)	14 (23.0)	0 (0.0)	
Types of support (%) n	81	69	12	0.563
Family	54 (66.7)	44 (63.8)	10 (83.3)	
Formal or institutions	17 (21.0)	16 (23.2)	1 (8.3)	
Informal or friends or neighbors	2 (2.5)	2 (2.9)	0 (0.0)	
No support	8 (9.9)	7 (10.1)	1 (8.3)	

SD: Standard Deviation.

into account that 20 years have passed since the publication of this work and during the last years the immigrant population has increased considerably.

There are significant differences between countries of origin and the choice of technique. Immigrants from Pakistan and the Philippines were more likely to choose in-center HD than PD, they had a higher proportion of language barrier and diabetic nephropathy, and lived in lower socioeconomic districts (74% of Pakistanis and 95% of Filipinos) than the rest. A recent study assesses the prevalence of cardiovascular risk factors and cardiovascular disease among Asian immigrants in Catalonia.²² This study found that the prevalence of cardiovascular risk factors such as type 2 diabetes, hypertension, hyperlipidemia and obesity is much higher in the immigrant population from South Asia (Pakistan, India and Bangladesh) as compared to natives and those from China and the Philippines.²³ In addition, the use of Shabu-crystal (methamphetamine) by the Filipino population is a fact and it is present in healthcare activity and probably influences the self-care capacity of this population in home-based techniques.²⁴ Cultural misunderstandings between physicians and patients, as well as language barriers, may

contribute to disparities in the quality of care. In this context, the design of culturally and linguistically appropriate health strategies and decision-making support tools is of utmost importance.²³

Despite the effort to offer all techniques to all patients, the question remains as to what extent the final decision is motivated by the influence of health professionals or by the patients themselves, and whether there are barriers that can be corrected with a different approach towards this population. It is possible that health professionals have been more reluctant to offer a home dialysis program to some immigrants, with economic difficulties or language barriers, in the event of a possible failure of the technique.

As in other studies,²⁵ we observed a higher survival rate for immigrant patients on dialysis as compared to natives in an urban setting in Spain. This is explained by the younger age of immigrants at the start of the ACKD clinic compared to natives, since when adjusting the Cox analysis for age, the survival advantage of the immigrant population is lost.

The older age and comorbidity (higher prevalence of diabetes mellitus) of Spaniards compared to immigrants probably

also have an influence on the greater choice of conservative therapy (CT) by the Spanish population (19.1 vs. 5.3%, respectively) and the higher mortality. We cannot rule out the influence of cultural factors on the reduced choice of CT by immigrants.

The main limitations of this study are the observational/retrospective nature of the analysis, the fact that it is performed in a single center, the lack of home HD among the techniques offered and the cross-sectional design of the study, which means that the results are limited to associations and not causality. Although there is a possibility that the average income of the health districts may differ from the personal income of the individual, it is a widely used indirect measure.^{17,18} Another limitation is that some factors that have been related to the choice of RRT in ACKD, such as the degree of comorbidity, frailty, lifestyle, distance to the center, educational level and verbal or written information about the modality or family support, have not been analyzed in this study.

In summary, most immigrants in Barcelona choose HD at the center vs. PD despite being younger and more independent in ADL and IADL, and being in better conditions than Spanish patients. The socioeconomic conditions and cultural needs of the immigrant population we serve must be taken into account in order to effectively reduce health inequities. The influence of non-medical factors on dialysis decision-making needs to be addressed, and this requires the involvement of an interdisciplinary team that includes social workers.

Funding

This study was conducted without funding.

Declaration of competing interest

The authors declare that they have no conflict of interest.

REFERENCES

- International Organization for Migration (IOM). In: World migration report (2020). Geneva: International Organization for Migration (IOM); 2020. p. 477 [Accessed 18 September 2022]. Available from: https://publications.iom.int/system/files/pdf/wmr_2020.pdf
- Office of the United Nations High Commissioner for Human Rights (OHCHR)World Health Organization (WHO)International Organization for Migration (IOM). In: International migration, health and human rights (2013). Geneva: International Organization for Migration (IOM); 2013. p. 60 [Accessed 18 September 2022]. Available from: <https://publications.iom.int/books/international-migration-health-and-human-rights>
- Instituto Nacional de Estadística (INE). In: Estadística Continua de Población (ECP) a 1 de octubre de 2023 [Internet]. Madrid: INE; 2023 [Accessed 7 November 2023]. Available from: <https://www.ine.es/daco/daco42/ecp/ecp0323.pdf>
- Hjern A. Migration and public health: Health in Sweden: The National Public Health Report 2012. *Scand J Public Health*. 2012;40:255-67.
- De Maio FG. Immigration as pathogenic: a systematic review of the health of immigrants to Canada. *Int J Equity Health*. 2010;9:27.
- Malmusi D, Borrell C, Benach J. Migration-related health inequalities: showing the complex interactions between gender, social class and place of origin. *Soc Sci Med*. 2010;71:1610-9.
- Moor I, Spallek J, Richter M. Explaining socioeconomic inequalities in self-rated health: a systematic review of the relative contribution of material, psychosocial and behavioural factors. *J Epidemiol Community Health*. 2017;71:565-75.
- Lalonde M. A new perspective on the health of Canadians. Ottawa (Canada): Minister of Supply and Services; 1974. p. 77.
- Hossin MZ. International migration and health: it is time to go beyond conventional theoretical frameworks. *BMJ Glob Health*. 2020;5:e001938.
- Kovesdy CP. Epidemiology of chronic kidney disease: an update 2022. *Kidney Int Suppl* (2011). 2022;12:7-11.
- Ulasi II, Awobusuyi O, Nayak S, Ramachandran R, Musso CG, Depine SA, et al. Chronic kidney disease burden in low-resource settings: regional perspectives. *Semin Nephrol*. 2022;42:151336.
- González Parra E, López Gómez JM. Análisis de la población extracomunitaria en programa de hemodiálisis (HD) en la comunidad de Madrid. *Nefrologia*. 2005;25:45-50.
- Torrelles Charlez I, Alfonso Roigé M, Úson Nuño A, Fernández Labadía E, Carrera Nivelá MA, Sorolla Villas C, et al. ¿Es el paciente inmigrante un buen candidato para diálisis peritoneal? *Enferm Nefrol*. 2018;21:269-74.
- Devine PA, Aisling EC. Renal replacement therapy should be tailored to the patient. *Practitioner*. 2014;258:19-22.
- Mahoney FI, Barthel DW. Functional evaluation: the Barthel Index. *Md Med J*. 1965;14:61-5.
- Lawton MP, Brody EM. Assessment of older people: self-maintaining and instrumental activities of daily living. *Gerontologist*. 1969;9:179-86.
- Ajuntament de Barcelona. Distribució territorial de la renda familiar disponible per càpita a Barcelona (2017) [Internet]. Barcelona: 17 Ajuntament de Barcelona; 2017 [Accessed 18 September 2022]. Available from: https://ajuntament.barcelona.cat/barcelonaeconomia/sites/default/files/RFD_2017_BCN.pdf.
- Baena-Díez JM, Barroso M, Cordeiro-Coelho SI, Díaz JL, Grau M. Impact of COVID19 outbreak by income: hitting hardest the most deprived. *J Public Health (Oxf)*. 2020;42:698-703.
- Fogazzi GB, Castelnovo C. Maintenance dialysis in patients from developing countries: the experience of an Italian center. *J Nephrol*. 2004;17:552-8.
- Hemmelgarn BR, Chou S, Wiebe N, Culleton BF, Manns BJ, Klarenbach S, et al. Differences in use of peritoneal dialysis and survival among East Asian, Indo Asian, and white ESRD patients in Canada. *Am J Kidney Dis*. 2006;48:964-71.
- Institut d'Estadística de Catalunya. In: Població estrangera a 1 de gener. Províncies [Internet]. Barcelona: Institut d'Estadística de Catalunya; 2021 [Accessed 22 January 2023]. Available form: <https://www.idescat.cat/poblacioestrangera/?geo=cat&nac=d426&b=2&lang=en>
- Satish P, Vela E, Cleries M, Kanaya AM, Kandula N, et al. Burden of cardiovascular risk factors and disease in five Asian groups in Catalonia: A disaggregated, population-based analysis of 121 000 first-generation Asian immigrants. *Eur J Prev Cardiol*. 2022;29:916-24.
- Supervía A, Ribas N, Sauras R, Rodríguez Campello AM, Pallàs O, López-Vilchez MÁ. Emergencies associated with shabu - crystal methamphetamine - in a tertiary care hospital. *Emergencias*. 2022;34:235-7.

-
24. Mohamed-Bibi S, Vaqué-Crusellas C, Alonso-Pedrol N. Design of culturally and linguistically tailored nutrition education materials to promote healthy eating habits among Pakistani women participating in the PakCat program in Catalonia. *Nutrients*. 2022;14:5239.
 25. van den Beukel TO, Dekker FW, Siegert CE. Increased survival of immigrant compared to native dialysis patients in an urban setting in the Netherlands. *Nephrol Dial Transplant*. 2008;23:3571-7.