



# Isolated postpartum central diabetes insipidus in a primi mother with postpartum preeclampsia

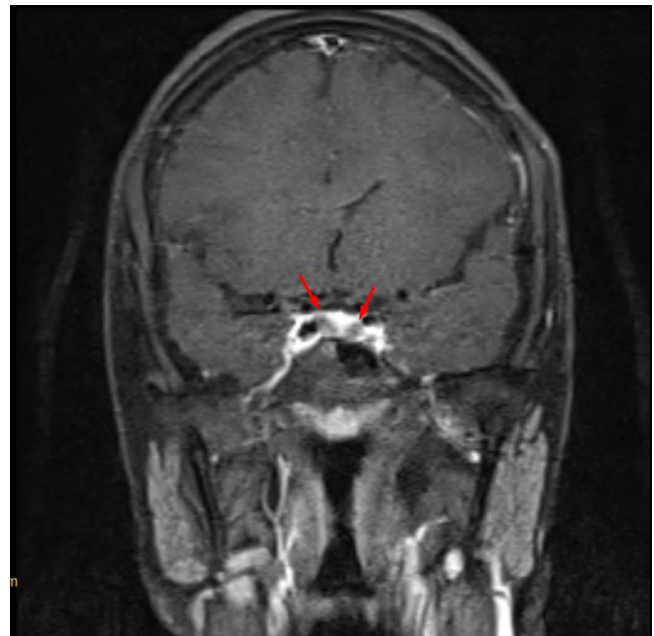
## Diabetes insípida central posparto aislada en una madre primípara con preeclampsia posparto

Dear Editor,

Diabetes insipidus is an uncommon endocrinological phenomenon in postpartum period and is usually encountered in women with impaired hepatic degradation, multiple gestation, pre-eclampsia, eclampsia, hepatic steatosis and HELLP syndrome (haemolysis, elevated liver enzymes and low platelet count).<sup>1</sup> Postpartum diabetes insipidus is a rare entity and is usually associated with Sheehan's syndrome<sup>1,2</sup> with associated deficiency of anterior pituitary hormones. Here, we report a rare case of isolated acute-onset diabetes insipidus in a primi mother with good response to 1-deamino-8-D-AVP (DDAVP).

A 24 year old primi mother who underwent lower segment caesarean section (LSCS) at 39 weeks' gestation due to maternal request and small for gestational age in February 2024, presented to the emergency department with complaints of headache, blurring of vision, polydipsia, and polyuria on the fourth postoperative day. She had no features of pre-eclampsia and she had normal lab parameters during her entire antenatal period. Her baby weighed 2400 g and the placenta weighed approximately 400 g. On examination, she had a blood pressure of 180/100 mm Hg without any focal neurological deficits. She was administered labetalol and intravenous magnesium (4 g bolus followed by 2 g/h infusion) according to the gynaecological protocol for eclampsia. Her antihypertensives included oral sustained release nifedipine and labetalol. Fundoscopy revealed a normal fundus. Lab revealed serum sodium – 144 meq/l, potassium – 3.7 meq/l, creatinine – 0.6 mg/dl, blood urea nitrogen – 7.4 mg/dl, glucose – 124 mg/dl, haemoglobin – 11.6 g/dl, WBC – 7600/mm<sup>3</sup>, platelets – 258,000/mm<sup>3</sup>, glucose – 124 mg/dl, bilirubin – 1.1 mg/dl, SGOT – 52 IU/l and SGPT – 48 IU/l. Urine examination revealed sterile urine with a specific gravity of 1005 and proteinuria of 190 mg/day without active urinary sediments. The calculated serum osmolality was 298 mOsm/kg, urine osmolality – 87.8 mmol/kg and she had a urine output of 300–400 ml/h. Due to low specific gravity, low urine osmolality, elevated serum sodium levels, and polyuria, she was diagnosed with diabetes insipidus and started on 10 µg nasal puff in each nostril twice a day (cumulative dose: 40 µg/day). Two hours after the desmopressin nasal puff, her urine osmolality increased to 305 mmol/kg and her urine output gradually decreased to 100–150 ml/h. Her urine

output was 5700 ml/day on the first day of admission. She was managed with different intravenous fluids (0.45% normal saline and Ringer's lactate) as per the serial electrolyte levels (Table 1) to ensure euvolemia. Her urine volume gradually decreased to 2.3l on Day 4. Withdrawal of nasal DDAVP on Day 5 of admission resulted again in polyuria with repeat urine osmolality – 104 mOsm/kg thereby confirming the diagnosis of central diabetes insipidus. MRI of the pituitary gland revealed a normally sized pituitary midline pituitary stalk with differentially enhanced foci measuring 6 mm × 4 mm and 5 mm × 4 mm in the right and left lateral aspects, respectively (Fig. 1). Abdominal ultrasonography revealed a normal postpartum uterus. Her 8 am serum cortisol level was 11 mcg/dl, serum TSH was 2.45 mIU/l and serum prolactin level was 246 mU/l indicative of an intact anterior pituitary hormonal axis. Her serum ADH was found to be less than 1 pg/ml. Her antihypertensives were weaned off to one antihypertensive medication upon discharge. She was transitioned to oral DDAVP (0.1 mg thrice a day) on Day 6 and discharged with



**Fig. 1 – Coronal view of T1 weighted MRI sequence of the pituitary with contrast showing two differentially enhancing foci in the right and left lateral aspects (red arrows) suggestive of pituitary incidentalomas.**

**Table 1 – Serial laboratory investigations during the admission period.**

Parameter	Day 0	Day 1	Day 2	Day 3	Day 4	Day 5 (withdrawal of DDAVP)	Day 6	Day 7
Sodium (meq/l)	144	138	136	134	133	144	138	136
Potassium (meq/l)	3.7	3.6	3.8	3.4	3.6	3.8	3.7	4
Glucose (mg/dl)	124	116	122	106	100	121	125	114
Urine specific gravity	1.005	1.010	1.015			1.005	1.015	1.020
Serum osmolality (mOsm/kg)	298	295				298		
Urine osmolality (mmol/kg)	87.8	346				104		
Urine output (ml)	5700	4100	3740	2780	2300	3940	2870	2320
ADH (pg/ml)	<1							
TSH (mcg/dl)				2.45				
Cortisol (mIU/l)				11				
Prolactin (mU/l)				246				

complete resolution of polyuria and polydipsia. She has stable electrolytes without polyuria on review with complete tapering of DDAVP within 3 weeks. Repeat serum ADH levels was found to be 2.3 pg/ml after stopping DDAVP on review after 1 month.

Diabetes insipidus is a hereditary or acquired medical disorder characterized by polyuria, polydipsia, and urine with low specific gravity and osmolality.<sup>1,3</sup> It is broadly classified as central diabetes insipidus (DI), which is characterized by deficiency or impaired secretion of arginine vasopressin (AVP) and nephrogenic DI which is characterized by resistance to the action of AVP.<sup>3</sup>

Postpartum diabetes insipidus can be a part of Sheehan's syndrome or transient gestational DI due to increased vasopressinase activity.<sup>1</sup> The estimated prevalence of vasopressinase-induced DI is approximately 2–4 in 1 lakh pregnancies.<sup>4,5</sup> The level of vasopressinase decreases to undetectable level approximately 5–6 weeks after delivery, thereby leading to a transient picture of DI.<sup>6</sup> Sheehan's syndrome is a notable cause of postpartum hypopituitarism and is characterized by anterior and posterior pituitary hormone deficiency.<sup>7</sup> It is usually a result of severe hypotension and shock due to postpartum haemorrhage, manifesting as lactation failure, asthenia, genital hair loss, hypopigmentation, psychiatric disturbances, cognitive dysfunction, and diabetes insipidus.<sup>1,7</sup> Vasopressinase-induced DI usually remits by delivery,<sup>8</sup> but isolated cases of postpartum DI complicated by placental abruption extending up to four weeks have been reported in the medical literature.<sup>1</sup> Our case is unique in that the patient underwent uneventful LSCS without any obvious cause of unregulated vasopressinase release in circulation, presenting with DDAVP-responsive DI. We postulate that the baseline vasopressinase levels might have been high in this patient because of a low birth weight baby, mild intrauterine growth restriction (IUGR) and higher placental weight/birthweight ratio.<sup>9</sup> Impaired hepatic clearance of vasopressinase may have contributed to DI, which is evident by concomitant hepatic enzyme derangement. Postpartum DI is commonly observed in multiple gestations, twin pregnancies, assisted In Vitro Fertilization, pre-eclampsia, eclampsia, and hepatic steatosis.<sup>1,8,9</sup> DDAVP is resistant to degradation by vasopressinase<sup>1,9</sup> and hence it produced an optimal clinical response. This patient came under the ambit of postpartum preeclampsia because the patient presented with new-onset headache, visual blurring, accelerated hypertension, and

mild liver dysfunction, which may also have contributed to the pathogenesis of DI.<sup>1,9,10</sup> Our patient had transient central diabetes insipidus which settled after 4 weeks which is evident by normalization of serum ADH.

This case highlights the importance of postpartum preeclampsia, higher placental/birth weight ratio, IUGR, and hepatic dysfunction as contributors to the pathogenesis of transient postpartum diabetes insipidus.

### Statement of ethics

This letter of editor was drafted after written informed consent of the patient in conformity with CARE clinical case reporting guidelines.

### Financial disclosures

This case did not receive any special grant or funding from public or private sources.

### Authors' contributions

Gerry George Mathew was responsible for conceptualisation, design, writing original draft, editing, visualization, investigation, sourcing and editing of clinical images, investigation results, critical revision of important intellectual content and approving final manuscript. Sharmila Ganesan was responsible for visualization, sourcing and editing of clinical images, critical revision of important intellectual content and gave final approval of the manuscript.

### Informed consent

Written informed consent of the patient was obtained prior to the submission of the article.

### Conflicts of interest

The authors declare that they have no competing interests.

## Data availability statement

The data for substantiating the findings of this manuscript are available with corresponding author and can be made available on request.

## Acknowledgements

The authors acknowledge the wholehearted encouragement of Dr. Nandakumar Chandrasekar, Consultant physician, Kathir memorial hospital who helped in logistics of managing patient, and Dr. Shankaranand, consultant anaesthetist, Kathir memorial hospital for this case report.

## REFERENCES

- Wallia A, Bizhanova A, Huang W, Goldsmith SL, Gossett DR, Kopp P. Acute diabetes insipidus mediated by vasopressinase after placental abruption. *J Clin Endocrinol Metab.* 2013;98:881-6, <http://dx.doi.org/10.1210/jc.2012-3548>.
- Van Havenbergh T, Robberecht W, Wilms G, Van Calenbergh F, Goffin J, Dom R, et al. Lymphocytic infundibulohypophysitis presenting in the postpartum period: case report. *Surg Neurol.* 1996;46:280-4, [http://dx.doi.org/10.1016/0090-3019\(96\)00215-7](http://dx.doi.org/10.1016/0090-3019(96)00215-7).
- Kalra S, Zargar AH, Jain SM, Sethi B, Chowdhury S, Singh AK, et al. Diabetes insipidus: the other diabetes. *Indian J Endocrinol Metab.* 2016;20:9-21, <http://dx.doi.org/10.4103/2230-8210.172273>.
- Robertson GL. Diabetes insipidus. *Endocrinol Metab Clin North Am.* 1995;24:549-72.
- Durr JA, Lindheimer MD. Diagnosis and management of diabetes insipidus during pregnancy. *Endocr Pract.* 1996;2:353-61, <http://dx.doi.org/10.4158/EP.2.5.353>.
- Davison JM, Sheills EA, Philips PR, Barron WM, Lindheimer MD. Metabolic clearance of vasopressin and an analogue resistant to vasopressinase in human pregnancy. *Am J Physiol.* 1993;264 Pt 2:F348-53, <http://dx.doi.org/10.1152/ajprenal.1993.264.2.F348>.
- Shivaprasad C. Sheehan's syndrome: newer advances. *Indian J Endocrinol Metab.* 2011;15 Suppl. 3:S203-7, <http://dx.doi.org/10.4103/2230-8210.84869>.
- Brewster UC, Hayslett JP. Diabetes insipidus in the third trimester of pregnancy. *Obstet Gynecol.* 2005;105 Pt 2:1173-6, <http://dx.doi.org/10.1097/01.AOG.0000161811.02155.68>.
- Rodrigo N, Hocking S. Transient diabetes insipidus in a post-partum woman with pre-eclampsia associated with residual placental vasopressinase activity. *Endocrinol Diabetes Metab Case Rep.* 2018;2018, <http://dx.doi.org/10.1530/EDM-18-0052>, 18-0052.
- Hauspurg A, Jeyabalan A. Postpartum preeclampsia or eclampsia: defining its place and management among the hypertensive disorders of pregnancy. *Am J Obstet Gynecol.* 2022;226(2S):S1211-21, <http://dx.doi.org/10.1016/j.ajog.2020.10.027>.

Gerry George Mathew<sup>a,\*</sup>, Sharmila Ganesan<sup>b</sup>

<sup>a</sup> Associate Professor, Department of Nephrology, SRM Medical College Hospital and Research Centre, Kattankulathur, Chengalpattu 603203, Tamil Nadu, India

<sup>b</sup> Assistant Professor, Department of Obstetrics and Gynaecology, Chettinad Academy of Research and Education, Chettinad Health City, SH 49 A, Kelambakkam 603103, Tamil Nadu, India

\* Corresponding author.

E-mail address: [gerrygeorge007@gmail.com](mailto:gerrygeorge007@gmail.com) (G.G. Mathew).

0211-6995/© 2024 Sociedad Española de Nefrología. Published by Elsevier España, S.L.U. This is an open access article under the CC BY-NC-ND license (<http://creativecommons.org/licenses/by-nc-nd/4.0/>). <https://doi.org/10.1016/j.nefro.2024.05.008>

# A case report of apparent mineralocorticoid excess, with nephrological and neurological symptoms since birth, and with a new probably pathogenic variant in HSD11B2 gene

## A propósito de un caso de exceso aparente de mineralocorticoides, con clínica nefrológica y neurológica desde el nacimiento, y con nueva variante probablemente patogénica en gen HSD11B2



Apparent mineralocorticoid excess (AME) is a rare form of pseudohyperaldosteronism characterised by early hypertension, hypokalaemia, metabolic alkalosis and low levels of

renin and aldosterone, due to low or no activity of the enzyme 11-beta-HSD2.<sup>1</sup>

This was a male who, after a full-term caesarean section, required advanced cardiopulmonary resuscitation. Newborn weight percentile less than 3. Healthy, non-consanguineous parents. He presented with severe neonatal pulmonary hyper-