



# Renal effects of sodium-glucose co-transporter-2 inhibitors in patients with heart failure with reduced or preserved ejection fraction

## Efectos renales de los inhibidores del cotransportador de sodio-glucosa-2 en pacientes con insuficiencia cardíaca con fracción de eyección reducida o preservada

Dear Editor,

We have read with great interest the review article authored by Sharaf El Din and colleagues, summarizing the reno-protective effects of sodium-glucose co-transporter-2 (SGLT-2) inhibitors, based on clinical evidence retrieved from the hallmark cardiovascular and renal outcome trials, also providing some interesting mechanistic insights.<sup>1</sup> SGLT-2 inhibitors confer cardiovascular protection for patients with heart failure (HF) regardless of diabetes mellitus (DM) or chronic kidney disease (CKD) status at baseline.<sup>2</sup> However, it has not been extensively studied whether SGLT-2 inhibitors exert reno-protective effect in patients with heart failure (HF), either with reduced or preserved left ventricular ejection fraction (HFrEF and HFpEF, respectively). Declining of renal function is of utmost importance for patients with HF, thus, development of optimal treatment strategies to prevent or delay this progression to kidney failure is required.<sup>3,4</sup> During the last 2 years we have welcomed the results of 3 hallmark trials, 2 in HFrEF and 1 in HFpEF populations, assessing the efficacy and safety of SGLT-2 inhibitors in subjects with HF, with or without DM.<sup>5-7</sup> Reno-protection with SGLT-2 inhibitors has been established, as demonstrated in relevant meta-analyses.<sup>8,9</sup> Therefore, since it has not been addressed previously, we sought to evaluate whether SGLT-2 inhibitors confer reno-protection in patients with HF, pooling data from the 3 dedicated trials.<sup>5-7</sup>

Two independent reviewers (D.P. and C.P.) extracted data of interest from the eligible reports. We evaluated the following surrogate outcomes: the composite renal outcome, as defined across the 3 included trials, and the  $\geq 40\%$  decrease in estimated glomerular filtration rate (eGFR) from baseline. Definition of composite renal endpoint is as follows: time to first occurrence of: (1) chronic dialysis; (2) renal transplantation; (3) sustained reduction of  $\geq 40\%$  in estimated GFR; or (4) sustained estimated GFR.

Differences were calculated with the use of risk ratio (RR) with 95% confidence interval (CI) for dichotomous variables,

after implementation of the Mantel-Haenszel (M-H) random effects formula. Statistical heterogeneity among studies was assessed by using  $I^2$  statistics. All analyses were performed at the 0.05 significance level.

Two independent reviewers (D.P. and C.P.) assessed the quality of the included RCTs, by using the Revised Cochrane risk of bias tool for randomized trials (RoB 2.0) for the primary efficacy outcome. Discrepancies between reviewers were solved by discussion, consensus or arbitration by a third senior reviewer (M.D.).

We pooled data from 3 trials in a total of 14,462 enrolled subjects with HFrEF or HFpEF, assigned either to SGLT-2 inhibitor treatment or placebo. Overall risk of bias was evaluated as low across all trials.

SGLT-2 inhibitor treatment resulted in a non-significant decrease in the risk for the primary composite outcome by 27% (RR=0.73, 95% CI; 0.50-1.08,  $I^2 = 66\%$ ,  $p = 0.11$ ), as shown in Fig. 1. In addition, SGLT-2 inhibitor treatment led to a non-significant decrease in the risk for  $\geq 40\%$  decrease in eGFR from baseline, compared to placebo (RR=0.70, 95% CI; 0.48-1.03,  $I^2 = 54\%$ ,  $p = 0.07$ ), as depicted in Fig. 2.

In conclusion, SGLT-2 inhibitors provide significant cardiovascular benefits in patients with HFrEF or HFpEF, however, they do not exert significant reno-protection. Of course, preservation of renal function with this drug class is of utmost importance for subjects with an established diagnosis of HF, contributing to further risk reduction for “hard” cardiovascular endpoints.

---

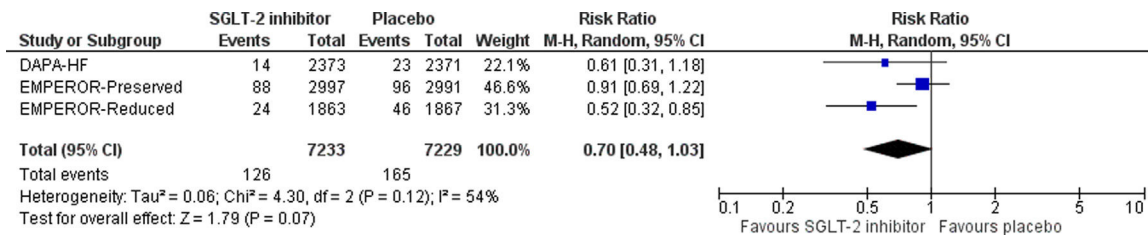
### Funding

None.

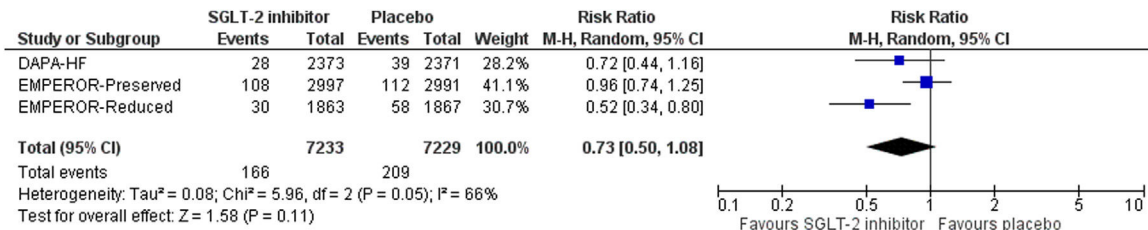
---

### Conflict of interest

None declared.



**Fig. 1 – Effect of SGLT-2 inhibitors compared to placebo on the risk for the composite renal outcome.**



**Fig. 2 – Effect of SGLT-2 inhibitors compared to placebo on the risk for sustained decrease in eGFR greater than 40% from baseline.**

## Acknowledgments

None.

## REFERENCES

- Sharaf El Din UAA, Salem MM, Abdulazim DO. Sodium-glucose cotransporter 2 inhibitors as the first universal treatment of chronic kidney disease. *Nefrologia*. 2021. S0211-6995(21)00143-0.
- Patoulias D, Papadopoulos C, Doumas M. Chronic kidney disease and diabetes status do not affect efficacy of SGLT-2 inhibitors in patients with heart failure with reduced ejection fraction. *Eur J Intern Med*. 2021;87:100-1.
- House AA, Wanner C, Sarnak MJ, Piña IL, McIntyre CW, Komenda P, et al. Heart failure in chronic kidney disease: conclusions from a Kidney Disease: Improving Global Outcomes (KDIGO) Controversies Conference. *Kidney Int*. 2019;95:1304-17.
- Scheffold JC, Filippatos G, Hasenfuss G, Anker SD, von Haehling S. Heart failure and kidney dysfunction: epidemiology, mechanisms and management. *Nat Rev Nephrol*. 2016;12:610-23.
- McMurray JJV, Solomon SD, Inzucchi SE, Køber L, Kosiborod MN, Martinez FA, et al. Dapagliflozin in patients with heart failure and reduced ejection fraction. *N Engl J Med*. 2019;381:1995-2008.
- Packer M, Anker SD, Butler J, Filippatos G, Pocock SJ, Carson P, et al. Cardiovascular and renal outcomes with empagliflozin in heart failure. *N Engl J Med*. 2020;383:1413-24.
- Anker SD, Butler J, Filippatos G, Ferreira JP, Bocchi E, Böhm M, et al. Empagliflozin in heart failure with a preserved ejection fraction. *N Engl J Med*. 2021, <http://dx.doi.org/10.1056/NEJMoa2107038>. Epub ahead of print.

- Palmer SC, Tendal B, Mustafa RA, Vandvik PO, Li S, Hao Q, et al. Sodium-glucose cotransporter protein-2 (SGLT-2) inhibitors and glucagon-like peptide-1 (GLP-1) receptor agonists for type 2 diabetes: systematic review and network meta-analysis of randomised controlled trials. *BMJ*. 2021;372:m4573.
- Zelniker TA, Wiviott SD, Raz I, Im K, Goodrich EL, Bonaca MP, et al. SGLT2 inhibitors for primary and secondary prevention of cardiovascular and renal outcomes in type 2 diabetes: a systematic review and meta-analysis of cardiovascular outcome trials. *Lancet*. 2019;393:31-9.

Dimitrios Patoulias<sup>a,\*</sup>, Christodoulos Papadopoulos<sup>b</sup>, Asterios Karagiannis<sup>a</sup>, Michael Doumas<sup>a,c</sup>

<sup>a</sup> Second Propedeutic Department of Internal Medicine, Aristotle University of Thessaloniki, General Hospital "Hippokraton", Greece

<sup>b</sup> Third Department of Cardiology, Aristotle University of Thessaloniki, General Hospital "Hippokraton", Greece

<sup>c</sup> Veterans Affairs Medical Center, George Washington University, Washington, DC, United States

\*Corresponding author.

E-mail address: [dipatoulias@gmail.com](mailto:dipatoulias@gmail.com) (D. Patoulias).

2013-2514/© 2021 Sociedad Española de Nefrología. Published by Elsevier España, S.L.U. This is an open access article under the CC BY-NC-SA license (<http://creativecommons.org/licenses/by-nc-sa/3.0/>). <https://doi.org/10.1016/j.nefro.2022.11.021>