

# Don't forget syphilis in membranous nephropathy before immunosuppressants: Latent syphilis in a patient with proteinuria

## No olvide la sífilis en la nefropatía membranosa antes de los inmunosupresores

### ARTICLE INFO

Dear Editor:

Patients with proteinuria especially nephrotic syndrome are more prone to infections both due to immunosuppressive drugs used in treatment and low Ig G levels because of loss through urine.<sup>1</sup> In addition, certain infections such as hepatitis B and C, human immunodeficiency virus (HIV) might be responsible for the glomerulonephritis.<sup>2</sup> So detailed medical history and certain screening tests are mandatory for discrimination of primary glomerulonephritis from secondary post-infectious forms and for protection of the patients from reactivation of silent micro-organisms with induction of immunosuppressive therapy.<sup>3</sup>

37 years old male married patient with a history of panic attack and hypertension was presented with dyspnea due to pleural effusion. Biochemically: serum creatinine: 0.64 mg/dL, haemoglobin: 13.2 g/dL, albumin: 2.1 g/dL, creatinine clearance: 126 mL/min, LDL-C: 315 mg/dL, 24-h urine protein excretion: 19 g/day, 24-hour urine albumin excretion: 10.7 g/day. Ultrasonographically kidneys were normal. Renal biopsy revealed membranous nephropathy stage 2 (Figs. 1 and 2). Our routine infection screening revealed positive results for syphilis antibodies with ELISA test (1/250 cut off index). Validation tests (Treponema palladium hemagglutination assay - TPHA - for both Ig M and Ig G) confirmed the diagnosis of asymptomatic (latent) syphilis. As there was no expressed recent history of high risk sexual behaviour, late latent syphilis was thought and three weekly doses of penicillin G benzathine (2.4 million units i.m.) were given to the patient. Serum complement levels of the patient were normal and proteinuria level of patient was not decreased with this therapy. As anti-phospholipase A2 receptor antibody (PLA2Rab) was positive ( $N \leq 20$  RU/mL) with ELISA test (result: 164 RU/mL), diagnosis of primary membranous glomerulopathy was ascertained. Under treatment of steroid and

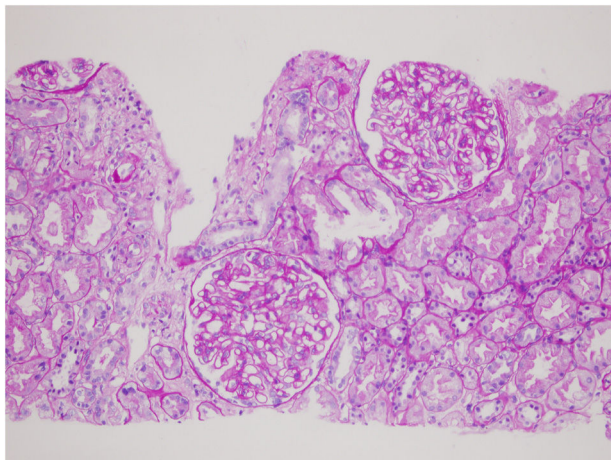
cyclosporine, his serum albumin levels increased to 3.1 g/dL, and proteinuria decreased to 1 g/day within one month.

Most of the membranous glomerulopathy (nearly 75%) cases are known as idiopathic (primary) without any identifiable causes such as infections, drugs, auto-immune diseases, neoplasms.<sup>4</sup> Serological tests (PLA2Rab, hepatitis B, C, HIV and syphilis) are important for both differential diagnosis of membranous glomerulopathy and minimize side effects of immunosuppressive treatment.<sup>5</sup> KDIGO guidelines do not advice to screen for syphilis routinely in patients with primary membranous glomerulopathy.<sup>6</sup> In addition, literature review showed many cases of syphilis as a cause of membranous glomerulopathy but as far as we know no report with latent syphilis along with primary membranous glomerulopathy was published. Also, one should remember false positive syphilis results (due to cross reactions with other antibodies) if one of nontreponemal tests (VDRL, RPR) is reactive and other one of treponemal tests (ELISA, TPHA, FTA-ABS) is nonreactive. In order to diagnose the organism directly PCR or direct fluorescent antibody testing for treponema palladium are used.<sup>7</sup> Presence of positive serology for syphilis (two different types of treponemal tests for antibodies against syphilis including Ig M and Ig G), absence of any sign of infection and treatment history is defined as -presumed- latent syphilis as in our case.

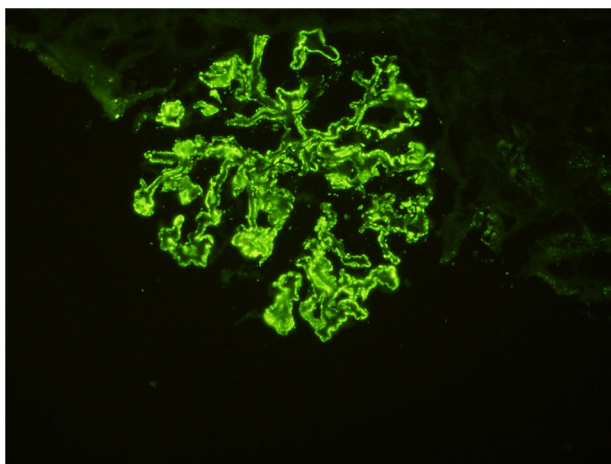
Anti-PLA2Rab is very specific for diagnosis and monitoring immunological activity of primary membranous glomerulopathy.<sup>8</sup> In our patient, with the presence of anti-PLA2Rab and absence of remission in proteinuria after 3 weeks of optimum treatment against syphilis, primary membranous glomerulopathy related nephrotic syndrome was diagnosed. In this particular patient, if the screening for syphilis had not been done, immunosuppressive treatment for primary membranous glomerulopathy might have led to progression through advanced (tertiary) syphilis infection.<sup>9</sup> This case makes us think it should be better to screen for syphilis before onset of immunosuppressive treatment even among patients with primary membranous glomerulopathy.

DOI of original article:

<https://doi.org/10.1016/j.nefro.2019.11.007>.



**Fig. 1** – Renal biopsy which display glomeruli with basal membrane thickening and enhanced mesangial matrix H.E.  $\times 200$ .



**Fig. 2** – Granular Ig G deposition along glomerular basal membranes on immunofluorescence microscopy  $\times 200$ .

### Authorship contributions

Concept: Kubra Kaynar; Design: Kubra Kaynar, Beyhan Guvercin; Control: Sukru Ulusoy; Data Collection: Sevdegul Mungan; Literature review: Kubra Kaynar; Writing the manuscript: Kubra Kaynar, Beyhan Guvercin.

### Compliance with ethical standards

No conflict of interests was declared. No fund was taken. Informed consent was obtained from the patient.

### Conflict of interest

None.

### REFERENCES

1. Giangiacomo J, Cleary TG, Cole BR, Hoffsten P, Robson AM. Serum immunoglobulins in the nephrotic syndrome. A possible cause of minimal change nephrotic syndrome. *N Eng J Med.* 1975;293:8-12.
2. Hunt EAK, Somers MJG. Infection-related glomerulonephritis. *Pediatr Clin North Am.* 2019;66:59-72, <http://dx.doi.org/10.1016/j.pcl.2018.08.005>.
3. Mahalingasivam V, Booth J, Sheaff M, Yaqoob M. Nephrotic syndrome in adults. *Acute Med.* 2018;17:36-43.
4. Noutong SA, Chornyy V, Alquadan KF, Ejaz AA, Koratala A. A red Herring in the green grass: syphilitic membranous glomerulonephritis. *Am J Med.* 2017;130:285-7, <http://dx.doi.org/10.1016/j.amjmed.2016.10.020>.
5. Mora Mora MT, Gallego Dominguez MS, Castellano Cervino MI, Novillo Santana R, Gomez-Martino Arrovo JR. Membranous glomerulonephritis in a patient with syphilis. *Nefrologia.* 2011;31:372-3, <http://dx.doi.org/10.3265/Nefrologia>.
6. Floege J, Barbour SJ, Cattran DC, et al. Management and treatment of glomerular diseases (part 1): conclusions from a kidney disease: improving global outcomes (KDIGO) controversies conference. *Kidney Int.* 2019;95:268-80.
7. Henao-Martinez AF, Johnson SC. Diagnostic tests for syphilis. *Neurol Clin Pract.* 2014;4:114-22.
8. McQuarrie EP. Anti-phospholipase A2 receptor antibodies in primary membranous glomerulopathy – 10 key points. *Nephrol Dial Transplant.* 2018;33:212-3, <http://dx.doi.org/10.1093/ndt/gfx366>.
9. Pinto-Almeida T, Rosmaninho A, Sanches M, Alves R, Selores M. Secondary syphilis on a psoriatic patient under cyclosporine: a challenging case. *Int J Dermatol.* 2014;53:e35-8, <http://dx.doi.org/10.1111/j.1365-4632.2011.05418.x>.

Kubra Kaynar<sup>a,\*</sup>, Beyhan Güvercin<sup>a</sup>, Sevdegül Mungan<sup>b</sup>, Şükrü Ulusoy<sup>a</sup>

<sup>a</sup> Department of Nephrology, School of Medicine, Karadeniz Technical University, Trabzon, Turkey

<sup>b</sup> Department of Pathology, School of Medicine, Karadeniz Technical University, Trabzon, Turkey

\* Corresponding author.

E-mail address: [kkaynar@yahoo.com](mailto:kkaynar@yahoo.com) (K. Kaynar).

<https://doi.org/10.1016/j.nefro.2019.12.001>

0211-6995/© 2020 Sociedad Española de Nefrología. Published by Elsevier España, S.L.U. This is an open access article under the CC BY-NC-ND license (<http://creativecommons.org/licenses/by-nc-nd/4.0/>).