

Original article

β1-Integrin blockade prevents podocyte injury in experimental models of minimal change disease

Gabriel Cara-Fuentes*, Rakesh Verma, Madhusudan Venkatareddy, Colin Bauer, Federica Piani, Sogut Turkmen Aksoy, Neha Vazzalwar, Gabriela E. Garcia, Mindy Banks, Flor A. Ordoñez, Carmen de Lucas-Collantes, Petter Bjornstad, Juan D. González Rodríguez, Richard J. Johnson, Puneet Garg

Children's Hospital, CO, United States

ARTICLE INFO

Article history:

Received 3 August 2022

Accepted 10 November 2022

Available online 18 November 2022

Keywords:

Minimal change disease

Podocyte

β1 integrin

Focal adhesion kinase

ABSTRACT

Introduction: Activation of the focal adhesion kinase (FAK) in podocytes is involved in the pathogenesis of minimal change disease (MCD), but the pathway leading to its activation in this disease is unknown. Here, we tested whether podocyte β1 integrin is the upstream modulator of FAK activation and podocyte injury in experimental models of MCD-like injury.

Methods: We used lipopolysaccharide (LPS) and MCD sera to induce MCD-like changes *in vivo* and in cultured human podocytes, respectively. We performed functional studies using specific β1 integrin inhibitors *in vivo* and *in vitro*, and integrated histological analysis, western blotting, and immunofluorescence to assess for morphological and molecular changes in podocytes. By ELISA, we measured serum LPS levels in 35 children with MCD or presumed MCD (idiopathic nephrotic syndrome [INS]) and in 18 healthy controls.

Results: LPS-injected mice showed morphological (foot process effacement, and normal appearing glomeruli on light microscopy) and molecular features (synaptopodin loss, nephrin mislocalization, FAK phosphorylation) characteristic of human MCD. Administration of a β1 integrin inhibitor to mice abrogated FAK phosphorylation, and ameliorated proteinuria and podocyte injury following LPS. Children with MCD/INS in relapse had higher serum LPS levels than controls. In cultured human podocytes, β1 integrin blockade prevented cytoskeletal rearrangements following exposure to MCD sera in relapse.

Conclusions: Podocyte β1 integrin activation is an upstream mediator of FAK phosphorylation and podocyte injury in models of MCD-like injury.

© 2022 Sociedad Española de Nefrología. Published by Elsevier España, S.L.U. This is an open access article under the CC BY-NC-ND license (<http://creativecommons.org/licenses/by-nc-nd/4.0/>).

* Corresponding author.

E-mail address: gabriel.carafuentes@cuanschutz.edu (G. Cara-Fuentes).

<https://doi.org/10.1016/j.nefro.2022.11.004>

0211-6995/© 2022 Sociedad Española de Nefrología. Published by Elsevier España, S.L.U. This is an open access article under the CC BY-NC-ND license (<http://creativecommons.org/licenses/by-nc-nd/4.0/>).

El bloqueo de la integrina $\beta 1$ previene la lesión de los podocitos en modelos experimentales en la enfermedad de cambios mínimos

R E S U M E N

Palabras clave:

Enfermedad de cambios mínimos
Podocito
Integrina $\beta 1$
Quinasa de adhesión focal

Antecedentes: La activación de la quinasa de adhesión focal (FAK) en podocitos juega un papel en la patogénesis de la enfermedad de cambios mínimos (ECM), pero su mecanismo de activación en dicha enfermedad es desconocido. En este estudio investigamos si la integrina $\beta 1$ de los podocitos modula la activación de FAK y del daño podocitario en modelos experimentales de la ECM.

Métodos: Utilizamos lipopolisacárido (LPS) y suero de pacientes con ECM para inducir daño podocitario *in vivo* e *in vitro*, respectivamente. Realizamos estudios funcionales usando inhibidores específicos de la integrina $\beta 1$ *in vivo* e *in vitro*, así como estudios histológicos, *western blots* y técnicas de inmunofluorescencia para evaluar cambios morfológicos y moleculares en podocitos. Usando ELISA medimos los niveles séricos de LPS en 35 niños con ECM o sospecha de ECM (síndrome nefrótico idiopático [SNI]) y en 18 individuos sanos.

Resultados: Los ratones inyectados con LPS desarrollaron cambios morfológicos (fusión de pedicelos, con apariencia normal de los glomérulos) y moleculares (pérdida de la expresión de sinaptopodina, cambio en la localización de la nefrina fosforilada y fosforilación de FAK), que son característicos de la ECM en humanos. La administración de un inhibidor de la integrina $\beta 1$ en ratones disminuyó la fosforilación de FAK, proteinuria y daño podocitario que ocurre tras la inyección de LPS. En niños con ECM/SNI, los niveles séricos de LPS fueron más elevados que en controles. En cultivos de podocitos humanos, la adición de un inhibidor de la integrina $\beta 1$ al suero de niños con ECM en recaída evitó cambios en el citoesqueleto.

Conclusiones: La integrina $\beta 1$ de los podocitos actúa como mediador de la activación de la FAK y del daño podocitario en modelos experimentales de la ECM.

© 2022 Sociedad Española de Nefrología. Publicado por Elsevier España, S.L.U. Este es un artículo Open Access bajo la licencia CC BY-NC-ND (<http://creativecommons.org/licenses/by-nc-nd/4.0/>).

Introduction

Minimal change disease (MCD) is the most common type of nephrotic syndrome in children and is thought to be mediated by circulating factors that directly target podocytes.^{1,2} Several candidates have been postulated,³⁻⁵ but the signaling pathways initiating podocyte injury in MCD remain poorly understood.

Upon injury, podocytes usually exhibit retraction of their foot processes, known as foot process effacement (FPE), as well as molecular alterations.⁶ Specifically, MCD is associated with extensive FPE, synaptopodin loss, nephrin de-phosphorylation, nephrin loss and/or mislocalization, and phosphorylation of the focal adhesion kinase (FAK).⁷⁻¹⁰

Podocyte FAK mediates proteinuria and FPE in several experimental models of podocyte injury.^{11,12} FAK can be activated by multiple mechanisms.¹³ In experimental models, nephrin phosphorylation mediates podocyte FAK activation,¹⁴ but the observation that nephrin phosphorylation is reduced in MCD¹⁰ suggests that other signaling pathways are involved in podocyte FAK activation in MCD.

In this study, we combined animal and cell culture studies to test the hypothesis that $\beta 1$ integrin is the upstream signal for podocyte FAK activation and podocyte injury in experimental models of MCD-like injury.

Materials and methods

Reagents and antibodies

The following primary antibodies were used: monoclonal mouse anti-synaptopodin (10R-2373, Fitzgerald) at 1:20 dilution; purified polyclonal rabbit anti-nephrin (kindly provided by Rakesh Verma) at 1:100; monoclonal rabbit anti-nephrin phospho Y1176+Y1193 (ab80299, Abcam) at 1:100; polyclonal rabbit anti-podocin (P0372, Sigma-Aldrich) at 1:100; monoclonal rat anti-mouse CD29-activated $\beta 1$ integrin – (550531, clone 9EG7, BD Pharmingen) at 1:100; monoclonal rabbit anti-phospho-FAK (Tyr397) (31H5L17, ThermoFisher) at 1:500; monoclonal rabbit anti-GAPDH (2118, cell signaling) at 1:7000. The following reagents were used: lipopolysaccharide (LPS) from *Escherichia Coli* O111:B4 (Sigma-Aldrich); monoclonal hamster anti CD29- $\beta 1$ integrin inhibitor for animal studies – (HM $\beta 1$, Biolegend),¹⁵ and Armenian hamster Ig G negative control (MCA2356, Biorad) used for intraperitoneal (IP) injections; monoclonal hamster anti CD29 (HM $\beta 1$, Biolegend) conjugated with 10-nm gold particles (approximately 4×10^{13} particles/ml, Aurion). For *in vitro* assays, we used a purified rat anti-human CD29 (Mab13, 552828, BD Pharmingen); fibronectin (356008, BD Pharmingen); and Rhodamine Phalloidin (R415, ThermoFisher).

LPS mouse model and $\beta 1$ integrin blockade in vivo

Eight- to twelve-week-old B6 background mice were injected with LPS (10 $\mu\text{g/g}$ body weight in 200 μl phosphate buffered saline [PBS]) or an equal volume of sterile PBS intraperitoneally. Spot urine samples were collected before and after LPS injection at different time points. Albuminuria was measured using ELISA and a polyclonal goat anti-mouse albumin (A90-134A, Bethyl laboratories), and results were normalized to urine creatinine. A subset of mice was injected intraperitoneally with a monoclonal hamster antibody (allosteric inhibitor) against mouse $\beta 1$ integrin (HM $\beta 1$, Biologend, 2.5 $\mu\text{g/g}$)¹⁵ or Armenian hamster IgG (control) 20 hours prior to LPS injection, as described above. In these mice, albuminuria was also measured prior to and 20 h following HM $\beta 1$ injection, but prior to LPS injection.

Immunostaining

Fresh frozen mouse kidneys were sectioned at 5- μm , and acetone fixed for eight minutes. Sections were blocked with 10% goat serum for 1 h. Frozen slides were used for immunofluorescence of mouse kidney tissue with activated $\beta 1$ integrin (9EG7) and podocin. For paraffin embedded mouse kidney, tissue samples were fixed in 10% formalin, paraffin embedded, sectioned at 3- μm , deparaffinized and rehydrated. Antigen retrieval was performed with 1X Tris-EDTA buffer at 96 °C for 30 min. After 20-min time to cool down, residual aldehydes were quenched in 0.1% sodium borohydride in Sorenson buffer for 15 min and permeabilized in 0.1% Triton X-100 for 10 min. After three 1 \times PBS washes, slides were blocked with 1% Bovine Serum Albumin (BSA) for 1 h. This was followed by overnight incubation at 4 °C with the corresponding primary antibody. For frozen and paraffin embedded slides, overnight incubation with primary antibody was followed by three 1 \times PBS washes and incubation with the appropriate Alexa Fluor secondary antibodies at 1:400 for 2 h at room temperature. Slides were washed again with 1 \times PBS and mounted with Vectashield® Mounting Medium with DAPI4,6,-Diamidino-2-phenylindole (DAPI). Images were captured with confocal microscopy for frozen tissue using a Leica Inverted SP53 Confocal Microscope and using a non-confocal Leica Microscope for paraffin embedded tissue.

Transmission electron microscopy (TEM)

Mouse kidney tissue preparation and processing was done using standard techniques.

Immunogold electron microscopy

The hamster monoclonal antibody against mouse $\beta 1$ integrin (HM $\beta 1$) was conjugated to 10 nm-gold particles by Aurion (<https://aurion.nl/>). Tail vein injection of this conjugated primary antibody at 2.5 $\mu\text{g/g}$ body weight was performed and kidneys were harvested 20 min later. Tissue was fixed with 2% paraformaldehyde and 2.5% glutaraldehyde. Samples were processed and analyzed using a JEOL JEM-1400Plus Transmission Electron Microscope.

Western blot analysis

Protein concentrations from isolated mouse glomeruli were determined using a BCA protein assay (Pierce). Proteins were extracted from plasma membranes in RIPA buffer (PBS containing 0.1% SDS, 1% Nonidet P-40, 0.5% sodium deoxycholate and 100 mM potassium iodide). Lysates were resolved using SDS-PAGE and transferred to PVDF membrane (GE Healthcare) using semidry transfer (Bio-Rad). Membranes were blocked using 5% milk. Immunoblotting was performed with the indicated primary (phospho FAK and GAPDH) antibody followed by secondary antibody.

Cell culture

Conditionally immortalized human podocytes were a gift from Dr. Saleem (University of Bristol, United Kingdom). Podocytes were cultured in RPMI medium with Glutamax (Invitrogen), 10% fetal bovine serum (FBS) (Invitrogen Corp), 200 U/ml penicillin, 0.1 mg/ml streptomycin (Roche Applied Science) along with ITS (insulin, transferrin, and selenium) (Invitrogen Corp) per standard protocols. For experiments, six well culture plates were coated with fibronectin (1 mg/ml diluted in PBS) and incubated at 37 °C for 2 h. Plates were then washed with PBS prior to plating podocytes in complete media.

Human podocytes stimulation and $\beta 1$ integrin blocking assays

Differentiated human podocytes were cultured with 20% sera from children with MCD or idiopathic nephrotic syndrome (INS), in relapse and remission, for 24 h. Subsequently, plates were washed with PBS and fixed with 4% paraformaldehyde. Next, cells were permeabilized using 0.5% Triton X-100 in PBS at room temperature for 5 min followed by PBS washes and blocking step with 1% BSA for 1 h. Next, we used Rhodamine Phalloidin (1:100 dilution) to assess changes in fine F-actin stress fibers. For blocking assays, podocytes were placed on fibronectin coated plates as above. Prior to MCD/INS sera treatments, a $\beta 1$ integrin inhibitor (Mab13 antibody)¹⁶ was mixed with culture media at 0.1 ml/ml concentration for 20 min at room temperature. This was followed by PBS washes, MCD/INS sera treatments, and phalloidin staining as above.

Human studies

Definitions. We used standard definitions for MCD, INS, relapse and remission.¹⁷ **Participants.** Demographics and clinical data are shown in [Supplementary Table 1](#). There were 35 children with diagnosis of MCD or INS at time of disease onset or during relapse. We included INS because kidney biopsies are not routinely performed in these children, but it is usually associated with MCD.¹⁸ Eighteen children without known history of glomerular disease or proteinuria served as control subjects. Patients and control subjects were recruited at 5 institutions (study approvals shown in 'Statement of Ethics'). Five control serum samples were obtained from Precision for Medicine (precisionformedicine.org). **LPS measurement.** Blood samples were collected, processed and stored at -80 °C. All samples were serum except for 5 plasma samples in the control group.

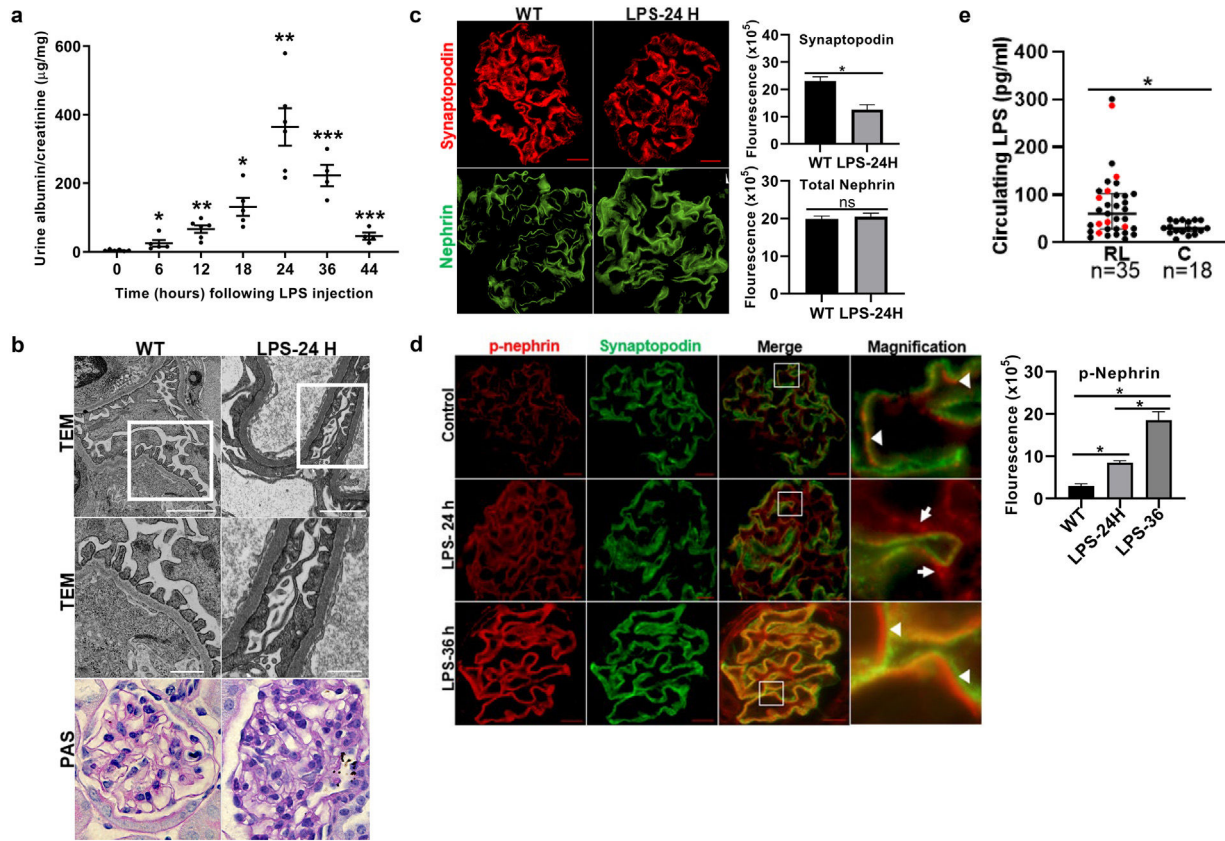


Fig. 1 – LPS replicates some key features of human MCD. (a) LPS causes transient albuminuria reaching a peak at 24 h. $N = 4–6$ per group. * $p = 0.004$; ** $p = 0.002$; *** $p = 0.009$, compared to control group (time 0). Data presented as mean \pm s.e.m. (b) By TEM (upper lane), LPS induces partial foot processes effacement by 24 h. Original images captured at 20,000 \times . Scale bars: 100 μ m. Middle lane shows a magnification of the upper lane images marked with a white square. By PAS staining (lower lane), mouse glomeruli appear normal or near normal following LPS. $N = 3–5$ per group. Images captured at 40 \times . Scale bars: 500 μ m. TEM transmission electron microscopy; PAS Periodic acid-Schiff; WT wild-type mice (controls). (c) LPS is associated with synaptopodin loss, whereas the expression of total nephryn remains intact following injury. $N = 3–5$ per group. * $p = 0.02$, ns not statistically significant. Images captured at 60 \times . Scale bars: 50 μ m. (d) LPS increases nephryn phosphorylation over time ($p < 0.01$ for time 0 vs 24 h and 0 vs 36 h). Far right column shows mislocalization of phosphorylated nephryn as noted by its granular pattern (arrows) 24 h after LPS, and a normal lineal pattern (arrowheads) prior to that and during the resolution phase of proteinuria. * $p = 0.02$. $N = 3–5$ per group. Images captured at 60 \times . Scale bars: 50 μ m. (e) LPS levels are higher in serum from children with MCD/INS during relapse ($N = 35$) than in control subjects ($N = 18$). * $p = 0.01$. Data presented as median \pm interquartile. MCD, minimal change disease; INS, idiopathic nephrotic syndrome. Red dots represent patients with new onset INS.

LPS quantification was performed using an ELISA kit (CSB-E09945h, Cusabio) as per manufacturer recommendations.

Statement of ethics

Human studies: The study was conducted ethically in accordance with the World Medical Association Declaration of Helsinki and was approved by the Colorado Multiple Institutional Review Board (#13-2700) at the University of Colorado and collaborative institutions: Rocky Mountain Kidney Center (#13-2700), Hospital Universitario Central de Asturias (#221/19), Hospital Niño Jesus (#R-0011/20), and Hospital Universitario Santa Lucia (EO-39/21). Written informed consents, and assents if appropriate, were obtained from participants and parents/guardian. **Animal studies:** All animal studies were

approved by the Institutional Animal Care and Use Committee at the University of Colorado, approval number #1038, and experiments were carried out in accordance with the National Institutes of Health guide for the care and use of Laboratory animals.

Statistical analysis

Statistical analysis was performed using GraphPad Prism (version 9, GraphPad Software). Due to non-normal distribution, so we examined differences among two groups using the unpaired two-tailed Mann-Whitney U. Mouse proteinuria was expressed as mean \pm standard error of the mean (s.e.m). LPS concentration in human sera was expressed as median \pm interquartile range. ImageJ software was used to

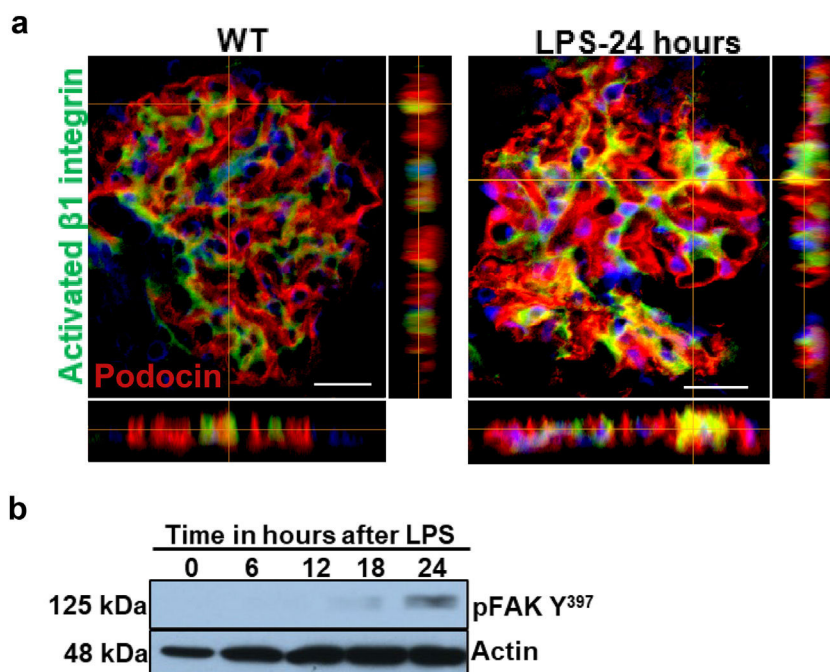


Fig. 2 – LPS activates podocyte $\beta 1$ integrin and FAK *in vivo*. (a) Frozen kidney sections from control and LPS-treated mice were stained using an antibody against activated $\beta 1$ integrin. Podocin was used a podocyte marker. Activated $\beta 1$ integrin expression colocalized with podocin 24 h following LPS, but not at baseline. $N = 3-5$ per group. Imaged were captured at $60\times$. Scale bars: $100\ \mu\text{m}$. (b) By western blot of glomerular lysates, phosphorylated FAK was upregulated 24 h following LPS. $N = 3$ per group. WT, wild-type mice (controls).

quantify the fluorescence in ≥ 10 glomeruli per animal in mouse studies. For quantification of stress fibers in cultured human podocytes, we evaluated cells in ten fields at $\times 20$ magnification, and stress fibers were expressed as percentage of cells with loss of actin filaments across the cytoplasm. An $\alpha < 0.05$ was considered statistically significant.

Results

LPS replicates some key features of human MCD

To test our hypothesis, we first evaluated if the LPS model of podocyte injury replicates some key features of human MCD. Among the two most common animal models to study MCD, LPS and puromycin aminoglycoside (PAN),¹⁹ we chose the former because infections usually trigger MCD relapse in children,²⁰ and because PAN is associated with glomerulosclerosis.²¹ Compared to controls (PBS), LPS-injected mice developed transient albuminuria (shown in Fig. 1a) and foot process effacement with normal appearing glomeruli on light microscopy (shown in Fig. 1b). By immunofluorescence, synaptopodin was decreased in LPS mice compared to controls, whereas the expression of total nephrin was preserved during injury (shown in Fig. 1c). Next, we performed dual immunofluorescence for phosphorylated nephrin and synaptopodin to assess for changes in the phosphorylation status and localization of nephrin during injury and recovery. At the peak of proteinuria, nephrin phosphorylation was increased (shown in Fig. 1d), compared to controls, but also mislocalized as noted by its granular pattern (shown

in Fig. 1d, far right column, arrows). Notably, nephrin exhibited a peak of phosphorylation and recovered its lineal pattern coinciding with the recovery phase of proteinuria (shown in Fig. 1d, far right column, arrowheads).

To further assess the potential relevance of the model to human MCD, we next measured LPS levels, using ELISA, in serum from children with MCD and clinically resumed MCD (INS) during relapse and in healthy controls. We found that serum LPS was significantly higher in MCD/INS compared to controls (shown in Fig. 1e).

Podocyte $\beta 1$ integrin signaling mediates FAK activation and podocyte injury *in vivo*

We first examined if podocyte $\beta 1$ integrin and FAK are activated following LPS. To assess this, we performed immunostaining of mouse kidney tissue using an antibody against activated $\beta 1$ integrin and podocin, as a podocyte marker, as well as western blotting of glomerular lysates testing for phosphorylated FAK. Following LPS, we found an increase in activated $\beta 1$ integrin expression in podocytes, as noted by its colocalization with podocin (shown in Fig. 2a), and an increase in FAK phosphorylation (shown in Fig. 2b). We next asked whether $\beta 1$ integrin activation could be an important upstream mediator of FAK phosphorylation and podocyte injury in this model. To address this, we administered a well-characterized specific blocking antibody to $\beta 1$ integrin, known as HM $\beta 1$,¹⁵ into LPS and control mice. We initially tested the antibody in wild-type mice, and we found that it was well tolerated and bound specifically to the major types of glomerular

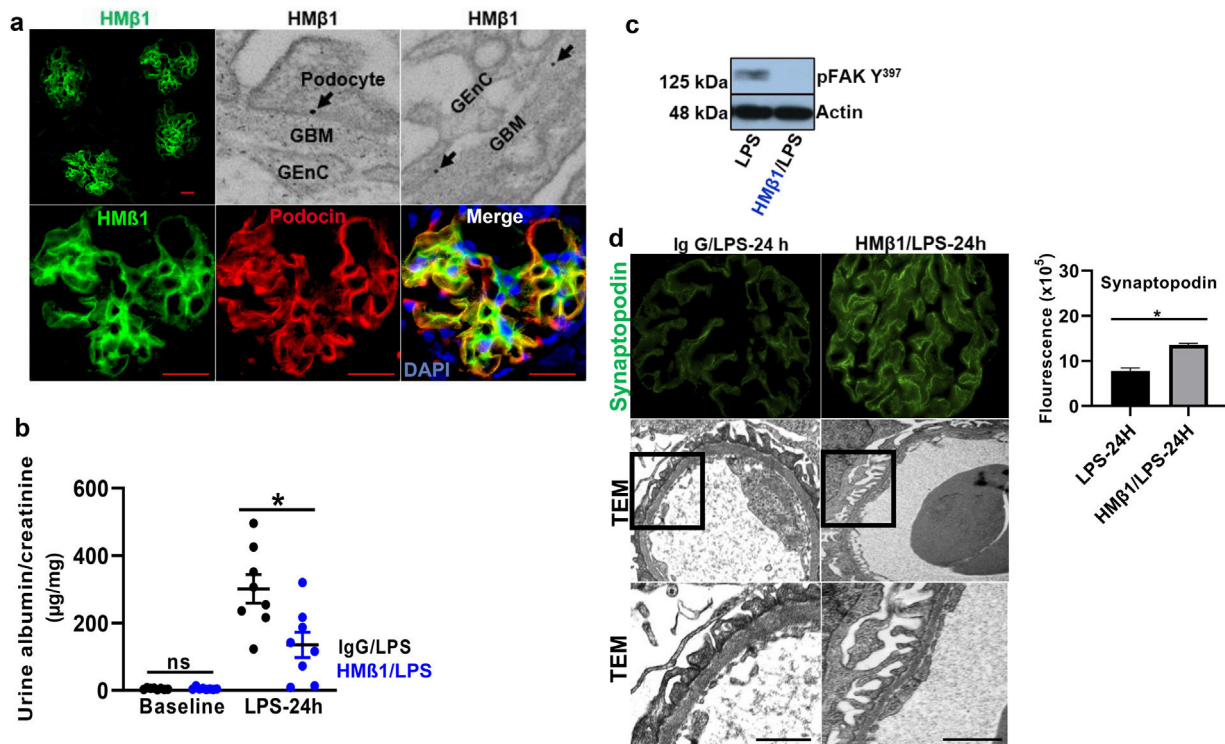


Fig. 3 – Podocyte $\beta 1$ integrin is an upstream mediator of FAK activation and podocyte injury in vivo. (a) HM $\beta 1$ (green) bound glomerular but not tubular cells by immunofluorescence of mouse kidney (upper row, left side). Images captured at 20 \times . Scale bars: 100 μ m. By TEM, injected HM $\beta 1$ conjugated with 10-nm gold particles (arrowheads) deposited onto glomerular endothelial cells and to the basal aspect of podocytes (upper row). Original images captured at 20,000 \times . N = 1. HM $\beta 1$ bound podocytes as shown by double immunostaining using podocin as podocyte marker (lower row). (b) Pre-treatment with the $\beta 1$ integrin inhibitor HM $\beta 1$ ameliorated LPS-induced albuminuria. N = 8 per group. * $p = 0.01$. (c) HM $\beta 1$ prevented FAK phosphorylation in glomerular lysate following LPS. N = 3–5 per group. This blot was cropped from the same gel displayed in Fig. 2b. (d) HM $\beta 1$ preserved synaptopodin expression (* $p = 0.02$) and podocyte foot processes morphology, by transmission electron microscopy, in mice pre-treated with HM $\beta 1$ compared to Ig G controls, following LPS. N = 3–5 per group. Bottom lane shows a magnification of the area marked with a black square in the middle lane. Image captured at 60 \times . Scale bars: 500 μ m.

cells in the kidney (endothelial, podocyte, mesangial cells), but not to tubular cells (shown in Fig. 3a, left upper corner). Specific binding to podocytes was shown using both immunoelectron microscopy involving HM $\beta 1$ -conjugated with 10 nM gold particles (shown in Fig. 3a, upper row) and double immunostaining with podocin, as podocyte marker (shown in Fig. 3a, bottom row). When injected alone, HM $\beta 1$ did not cause changes in baseline proteinuria in healthy mice (shown in Supplementary Fig. 1). Next, we pre-treated mice with a single intraperitoneal dose of HM $\beta 1$ or IgG isotype (control) followed by a single dose of LPS 20 h later. The administration of HM $\beta 1$ ameliorated proteinuria (shown in Fig. 3b), prevented FAK phosphorylation (shown in Fig. 3c), and preserved podocyte health and shape, as noted by the preserved synaptopodin expression and podocyte foot process morphology, respectively, compared to control group (shown in Fig. 3d, upper and lower row respectively).

MCD sera mediate podocyte injury via $\beta 1$ integrin signaling in vitro

MCD sera in relapse has been previously shown to activate podocytes,^{22,23} consistent with the idea that the sera

may carry circulating pathogenic factors. To test whether the podocyte $\beta 1$ integrin is a target of those circulating factors and mediator of podocyte injury, we performed functional studies using cultured human podocytes, MCD sera in relapse and remission, and the human $\beta 1$ integrin-blocking antibody Mab13.¹⁶ Sera from children with MCD in relapse, but not in remission, caused actin rearrangement in cultured human podocytes, and this was abrogated by preemptive incubation with Mab13 (shown in Fig. 4).

Discussion

Minimal change disease is considered a podocyte disease mediated by circulating factors, yet the mechanisms initiating podocyte injury remain incompletely understood.¹ By integrating animal and cell culture studies, here we showed that podocyte $\beta 1$ integrin signaling mediates podocyte injury in a traditional animal model of MCD-like injury, that replicates some key features of human MCD, and in cultured human podocytes.

In this study, we demonstrated that podocyte $\beta 1$ integrin activation and downstream signaling involving FAK phosphorylation is an important causal pathway for podocyte injury

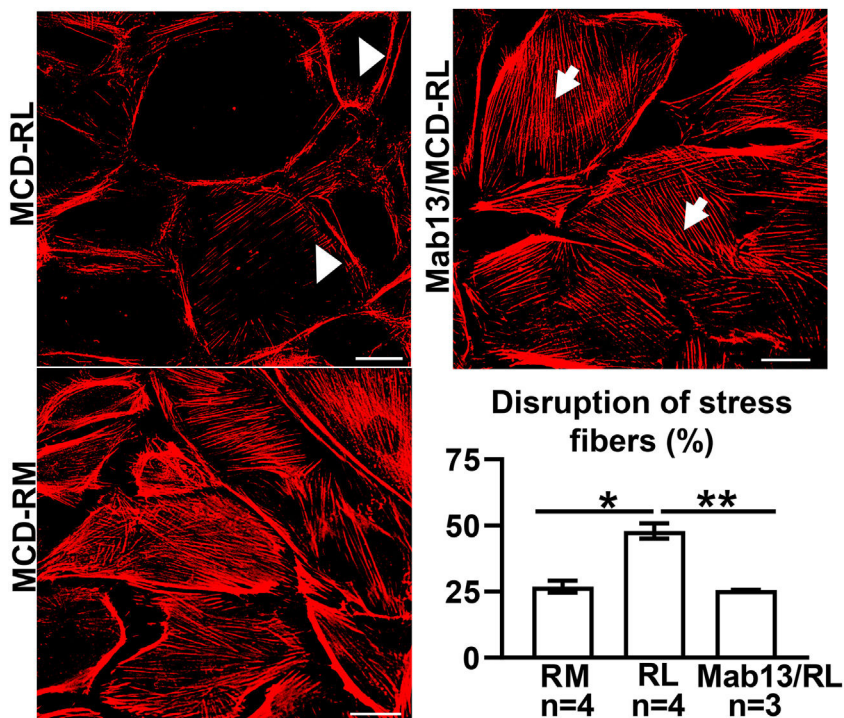


Fig. 4 – MCD sera in relapse mediate podocyte injury via $\beta 1$ integrin signaling. Sera from children with MCD in relapse (RL) leads to actin rearrangement (arrowheads) compared to sera in remission (RM). $N = 4$ per group. $*p = 0.02$. Mab13 prevents changes in actin stress fibers (white arrows) in podocytes cultured with MCD sera in relapse. $N = 3$. $**p = 0.04$. Scale bars: 100 μm . Data presented as mean \pm S.D. MCD, minimal change disease.

in vivo. We showed that the $\beta 1$ integrin inhibitor HM $\beta 1$ ¹⁵ ameliorated podocyte injury, as noted by the reduction in proteinuria, abrogation of FAK phosphorylation, and preservation of synaptopodin expression and podocyte foot processes. Our data identify podocyte $\beta 1$ integrin signaling as upstream mediator of podocyte injury in this model of proteinuria, raising the possibility that circulating factors involved in MCD may cause podocyte injury by activating this pathway. Consistent with this, we showed that MCD sera in relapse can directly cause podocyte injury *in vitro*, as noted by actin rearrangements, and this was abrogated by $\beta 1$ integrin blockade. Collectively, our data support the hypothesis that podocyte $\beta 1$ integrins may be a molecular target for circulating factors in MCD, and this may help guide the search for novel circulating factors important for the disease.

Contrary to our findings, Lee et al. reported a reduction in activated $\beta 1$ integrin expression in LPS mice, and that a $\beta 1$ integrin agonist ameliorated podocyte injury *in vivo*.²⁴ These contrasting results may be due to different methodology or off-target effects of the antibody. Notably, we showed that the $\beta 1$ integrin inhibitor HM $\beta 1$ bound specifically to podocytes and prevented morphological and molecular alterations *in vivo*, thus supporting a protective role directly on podocytes. In support to this, injection of the $\beta 1$ integrin inhibitor HM $\beta 1$ into mice does not ameliorate the systemic immune response following LPS.¹⁵ Consistent with our findings, Ma et al. also showed that LPS triggers podocyte FAK phosphorylation in mice.¹¹ Genetic and pharmacological inhibition of $\alpha 2\beta 1$ integrins also ameliorated other forms of glomerular injury *in*

in vivo.²⁵ Thus, it is possible that the effects of $\beta 1$ integrin inhibitors or agonists may depend on the targeted cell and/or the specific α chain associated to $\beta 1$ integrin. In humans, podocyte $\beta 1$ integrin upregulation has been reported in early diabetic nephropathy,²⁶ whereas loss of podocyte $\beta 1$ integrin activation is observed in focal segmental glomerulosclerosis (FSGS), but not in MCD.²⁷ Consistent with this, podocyte FAK phosphorylation is increased in MCD, but not FSGS.⁹

Our study is the first to show that LPS levels are high in serum from children with MCD/SSNS during relapse. This finding seems relevant to MCD because LPS is not only a marker of systemic inflammation but also a trigger of the innate immune response, which is involved in the disease pathogenesis.²⁸ LPS has been also linked to cardiovascular risk and progression to diabetic nephropathy in patients with type 1 diabetes.^{29,30} Thus, the source or potential role of LPS in MCD warrants further investigations. Given the association of MCD with infections,²⁰ food intolerance and allergies,^{31,32} it is possible that LPS in circulation is the result of a high permeable gut ('leaky gut'), or exogenous sources such as respiratory infections or allergens. Mechanistically, LPS could either activate toll-like receptors on glomerular cells,³³ and/or act as amplifier of the immune response or the putative circulating factors.²⁹

Our findings led us to postulate that circulating factors may directly activate podocyte $\beta 1$ integrins and downstream pathways initiating podocyte shape changes, similar to that reported with other integrins such as $\alpha v\beta 3$.³⁴ This seems a plausible mechanistic pathway for transient proteinuria in LPS

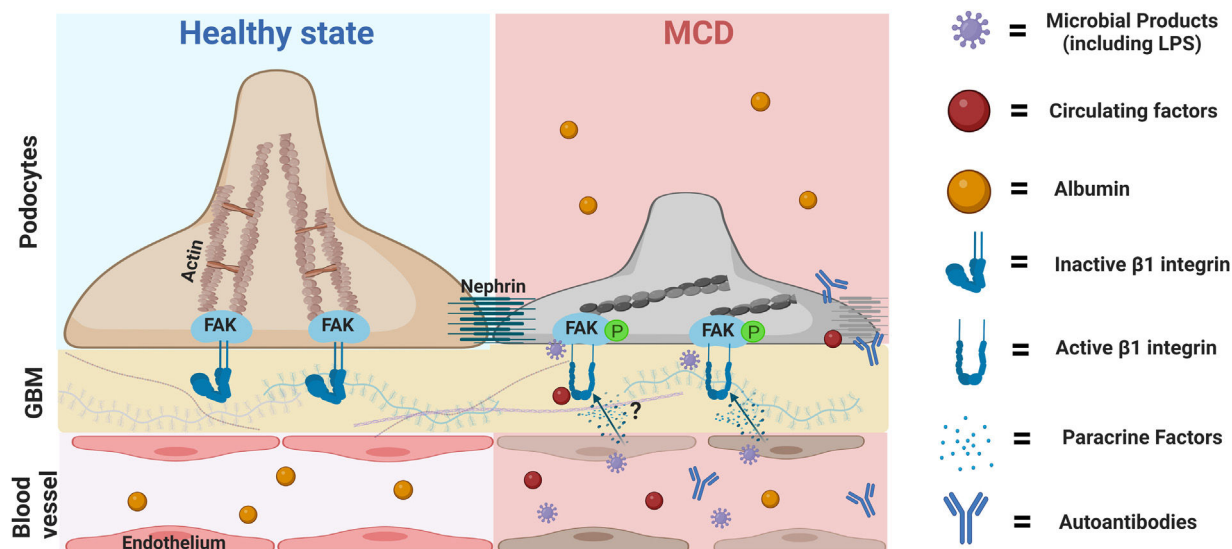


Fig. 5 – Proposed role of the podocyte $\beta 1$ integrin-FAK axis in MCD. Infections are the most common trigger of relapse of nephrotic syndrome in children with SSNS and MCD. Our findings suggest that microbial products such as LPS can target podocytes leading to cytoskeletal changes and proteinuria via activation of the $\beta 1$ integrin/FAK axis. Thus, we postulate that microbial products, along with other molecules with the ability to activate this axis, could be the initial triggers leading to podocyte injury in MCD. Likewise, it is also possible that additional insults (circulating autoantibodies or molecules produced by immune or glomerular cells such as endothelial cells) may be necessary to initiate, aggravate and/or perpetuate podocyte injury and proteinuria in MCD. MCD, minimal change disease; FAK, focal adhesion kinase; FAK p, phosphorylated focal adhesion kinase; GBM, glomerular basement membrane. Cartoon created with Biorender.com.

mice and healthy children with transient proteinuria during infections. What's the relevance for MCD? It is tentative to postulate that an exaggerated and/or perpetuated involvement of this pathway may initiate podocyte injury in MCD, and this may be further aggravated by additional insults such as autoantibodies,^{4,5} local cytokines,³⁵ other circulating factors,² and/or intrinsic podocyte dysregulation (shown in Fig. 5).³⁶ A candidate target for sustained podocyte injury is nephrin. We showed that LPS induced structural and molecular changes in glomeruli like that observed in MCD except for nephrin phosphorylation, which peaked in the LPS model during the recovery phase of proteinuria whereas it is reduced in MCD during relapse.¹⁰ Recently Watts et al. showed evidence for nephrin autoantibodies in 29% patients with MCD,⁵ and experimental models showed that these autoantibodies as well as impaired mechanisms of nephrin phosphorylation can cause podocyte injury.^{37,38} Thus, podocyte injury in MCD may be the result of a multi-hit process involving different insults that may explain the heterogeneity of the disease.

Our study has limitations. We identified podocyte $\beta 1$ integrin as a candidate target for circulating factors, but the nature of these factors is still under investigation. We showed that $\beta 1$ integrin antibodies bound and protected podocytes, but we cannot exclude that these antibodies also exert a protective effect on other glomerular cells (such as endothelial cells) that may indirectly help prevent podocyte injury. Because we combined mouse and human studies, we used appropriate $\beta 1$ integrin blocking antibodies (HM $\beta 1$ and Mab13, respectively) for each species. While different antibodies could have a distinct effect on cells, both HM $\beta 1$ and Mab13 have been shown to block $\beta 1$ integrin activation.^{15,16} Given the

disease heterogeneity, our studies do not preclude other pathways to be important in MCD. We used common experimental models of MCD,^{19,23} but further validation of our studies is necessary whenever better animal models of MCD are available.

In summary, we showed that podocyte $\beta 1$ integrin blockade ameliorated podocyte injury *in vivo* and *in vitro*. The identification of molecules or mechanisms involved in podocyte $\beta 1$ integrin activation could provide insights into the processes triggering MCD, and may help develop targeted therapies.

Data availability statement

All data analyzed during this study are included in this article and its supplementary material files. Further inquiries can be directed to the corresponding author.

Conflict of interest

The authors declare they have no conflict of interest.

Appendix A. Supplementary data

Supplementary data associated with this article can be found, in the online version, at [doi:10.1016/j.nefro.2022.11.004](https://doi.org/10.1016/j.nefro.2022.11.004).

REFERENCES

1. Vivarelli M, Massella L, Ruggiero B, Emma F. Minimal change disease. *Clin J Am Soc Nephrol*. 2017;12:332-45, <http://dx.doi.org/10.2215/CJN.05000516>.
2. Davin JC. The glomerular permeability factors in idiopathic nephrotic syndrome. *Pediatr Nephrol*. 2016;31:207-15, <http://dx.doi.org/10.1007/s00467-015-3082-x>.
3. Bakker WW, van Dael CM, Pierik LJ, van Wijk E, Nauta JA, Borghuis JT, et al. Altered activity of plasma hemopexin in patients with minimal change disease in relapse. *Pediatr Nephrol*. 2005;20:1410-5, <http://dx.doi.org/10.1007/s00467-005-1936-3>.
4. Jamin A, Berthelot L, Couderc A, Chemouny JM, Boedec E, eHoux L, et al. Autoantibodies against podocytic UCHL1 are associated with idiopathic nephrotic syndrome relapses and induce proteinuria in mice. *J Autoimmun*. 2018;89:149-61, <http://dx.doi.org/10.1016/j.jaut.2017.12.014>.
5. Watts AJB, Keller KH, Lerner G, Rosales I, Bernard Collins A, Sekulic M, et al. Discovery of autoantibodies targeting nephrin in minimal change disease supports a novel autoimmune etiology. *J Am Soc Nephrol*. 2022;33:238-52, <http://dx.doi.org/10.1681/ASN.2021060794>.
6. Kopp JB, Anders HJ, Susztak K, Podestà MA, Remuzzi G, Hildebrandt F, et al. Podocytopathies. *Nat Rev Dis Primers*. 2020;6:68, <http://dx.doi.org/10.1038/s41572-020-0196-7>.
7. Srivastava T, Garola RE, Whiting JM, Alon US. Synaptopodin expression in idiopathic nephrotic syndrome of childhood. *Kidney Int*. 2001;59:118-25, <http://dx.doi.org/10.1046/j.1523-1755.2001.00472.x>.
8. Wernerson A, Dunér F, Pettersson E, Mengarelli Widholm S, Berg U, Ruotsalainen V, et al. Altered ultrastructural distribution of nephrin in minimal change nephrotic syndrome. *Nephrol Dial Transplant*. 2003;18:70-6, <http://dx.doi.org/10.1093/ndt/18.1.70>.
9. George B, Verma R, Soofi AA, Garg P, Zhang J, Park TJ, et al. Crk1/2-dependent signaling is necessary for podocyte foot process spreading in mouse models of glomerular disease. *J Clin Invest*. 2012;122:674-92, <http://dx.doi.org/10.1172/JCI60070>.
10. Uchida K, Suzuki K, Iwamoto M, Kawachi H, Ohno M, Horita S, et al. Decreased tyrosine phosphorylation of nephrin in rat and human nephrosis. *Kidney Int*. 2008;73:926-32, <http://dx.doi.org/10.1038/ki.2008.19>.
11. Ma H, Togawa A, Soda K, Zhang J, Lee S, Ma M, et al. Inhibition of podocyte FAK protects against proteinuria and foot process effacement. *J Am Soc Nephrol*. 2010;21:1145-56, <http://dx.doi.org/10.1681/ASN.2009090991>.
12. Delimont D, Dufek BM, Meehan DT, Zalocchi M, Gratton MA, Phillips G, et al. Laminin α 2-mediated focal adhesion kinase activation triggers Alport glomerular pathogenesis. *PLoS ONE*. 2014;9:e99083, <http://dx.doi.org/10.1371/journal.pone.0099083>.
13. Hamadi A, Bouali M, Dontenwill M, Stoeckel H, Takeda K, Rondé P. Regulation of focal adhesion dynamics and disassembly by phosphorylation of FAK at tyrosine 397. *J Cell Sci*. 2005;118:4415-25, <http://dx.doi.org/10.1242/jcs.02565>.
14. Dlugos CP, Picciotto C, Lepa C, Krakow M, Stober A, Eddy M-L, et al. Nephrin signaling results in integrin β 1 activation. *J Am Soc Nephrol*. 2019;30:1006-19, <http://dx.doi.org/10.1681/ASN.2018040362>.
15. Hakanpää L, Kiss EA, Jacquemet G, Miinalainen I, Lerche M, Guzman C, et al. Targeting β 1-integrin inhibits vascular leakage in endotoxemia. *Proc Natl Acad Sci USA*. 2018;115:E6467-76, <http://dx.doi.org/10.1073/pnas.1722317115>.
16. Mould AP, Akiyama SK, Humphries MJ. The inhibitory anti-beta1 integrin monoclonal antibody 13 recognizes an epitope that is attenuated by ligand occupancy. Evidence for allosteric inhibition of integrin function. *J Biol Chem*. 1996;271:20365-74, <http://dx.doi.org/10.1074/jbc.271.34.20365>.
17. KDIGO 2021 clinical practice guideline for the management of glomerular diseases. *Kidney Int*. 2021;100:S1-276, <https://doi.org/10.1016/j.kint.2021.05.021>.
18. The primary nephrotic syndrome in children. Identification of patients with minimal change nephrotic syndrome from initial response to prednisone. A report of the International Study of Kidney Disease in Children. *J Pediatr*. 1981;98:561-4, [http://dx.doi.org/10.1016/s0022-3476\(81\)80760-3](http://dx.doi.org/10.1016/s0022-3476(81)80760-3).
19. Purohit S, Piani F, Ordoñez FA, de Lucas-Collantes C, Bauer C, Cara-Fuentes G. Molecular mechanisms of proteinuria in minimal change disease. *Front Med (Lausanne)*. 2021;7:61600, <http://dx.doi.org/10.3389/fmed.2021.761600>.
20. MacDonald NE, Wolfish N, McLaine P, Phipps P, Rossier E. Role of respiratory viruses in exacerbations of primary nephrotic syndrome. *J Pediatr*. 1986;108:378-82, [http://dx.doi.org/10.1016/s0022-3476\(86\)80876-9](http://dx.doi.org/10.1016/s0022-3476(86)80876-9).
21. Kim YH, Goyal M, Kurnit D, Wharram B, Wiggins J, Holzman L, et al. Podocyte depletion and glomerulosclerosis have a direct relationship in the PAN-treated rat. *Kidney Int*. 2001;60:957-68, <http://dx.doi.org/10.1046/j.1523-1755.2001.060003957.x>.
22. Ishimoto T, Cara-Fuentes G, Wang H, Shimada M, Wasserfall CH, Winter WE, et al. Serum from minimal change patients in relapse increases CD80 expression in cultured podocytes. *Pediatr Nephrol*. 2013;28:1803-12, <http://dx.doi.org/10.1007/s00467-013-2498-4>.
23. Robins R, Baldwin C, Aoudjit L, Côté JF, Gupta IR, Takano T. Rac1 activation in podocytes induces the spectrum of nephrotic syndrome. *Kidney Int*. 2017;92:349-64, <http://dx.doi.org/10.1016/j.kint.2017.03.010>.
24. Lee HW, Khan SQ, Faridi MH, Wei C, Tardi NJ, Altintas MM, et al. A podocyte-based automated screening assay identifies protective small molecules. *J Am Soc Nephrol*. 2015;26:2741-52, <http://dx.doi.org/10.1681/ASN.2014090859>.
25. Borza CM, Su Y, Chen X, Yu L, Mont S, Chetyrkin S, et al. Inhibition of integrin α 2 β 1 ameliorates glomerular injury. *J Am Soc Nephrol*. 2012;23:1027-38, <http://dx.doi.org/10.1681/ASN.2011040367>.
26. Sawada K, Toyoda M, Kaneyama N, Shiraiwa S, Moriya H, Miyatake H, et al. Upregulation of α 3 β 1-integrin in podocytes in early-stage diabetic nephropathy. *J Diabetes Res*. 2016;2016:9265074, <http://dx.doi.org/10.1155/2016/9265074>.
27. Potla U, Ni J, Vadapampil J, Yang G, Leventhal JS, Campbell KN, et al. Podocyte-specific RAP1GAP expression contributes to focal segmental glomerulosclerosis-associated glomerular injury. *J Clin Invest*. 2014;124:1757-69, <http://dx.doi.org/10.1172/JCI67846>.
28. Colucci M, Corpetti G, Emma F, Vivarelli M. Immunology of idiopathic nephrotic syndrome. *Pediatr Nephrol*. 2018;33:573-84, <http://dx.doi.org/10.1007/s00467-017-3677-5>.
29. Manco M, Putignano L, Bottazzo GF. Gut microbiota, lipopolysaccharides, and innate immunity in the pathogenesis of obesity and cardiovascular risk. *Endocr Rev*. 2010;31:817-44, <http://dx.doi.org/10.1210/er.2009-0030>.
30. Nymark M, Pussinen PJ, Tuomainen AM, Forsblom C, Groop PH, Lehto M. Serum lipopolysaccharide activity is associated with the progression of kidney disease in Finnish patients with type 1 diabetes. *Diabetes Care*. 2009;32:1689-93, <http://dx.doi.org/10.2337/dc09-0467>.
31. Lemley KV, Faul C, Schramm K, Meyers K, Kaskel F, Dell KM, et al. The effect of a gluten-free diet in children with difficult-to-manage nephrotic syndrome. *Pediatrics*. 2016;138, <http://dx.doi.org/10.1542/peds.2015-4528>.
32. Meadow SR, Sarsfield JK, Scott DG, Rajah SM. Steroid-responsive nephrotic syndrome and allergy:

- immunological studies. *Arch Dis Childhood*. 1981;56:517–24, <http://dx.doi.org/10.1136/adc.56.7.517>.
33. Banas MC, Banas B, Hudkins KL, Wietecha TA, Iyoda M, Bock E, et al. TLR4 links podocytes with the innate immune system to mediate glomerular injury. *J Am Soc Nephrol*. 2008;19:704–13, <http://dx.doi.org/10.1681/ASN.2007040395>.
34. Hayek SS, Koh KH, Grams ME, Wei C, Ko YA, Li J, et al. A tripartite complex of suPAR APOL1 risk variants and $\alpha(v)\beta(3)$ integrin on podocytes mediates chronic kidney disease. *Nat Med*. 2017;23:945–53, <http://dx.doi.org/10.1038/nm.4362>.
35. Kim AH, Chung JJ, Akilesh S, Koziell A, Jain S, Hodgins JB, et al. B cell-derived IL-4 acts on podocytes to induce proteinuria and foot process effacement. *JCI Insight*. 2017;2, <http://dx.doi.org/10.1172/jci.insight.81836>.
36. Lane BM, Chryst-Stangl M, Wu G, Shalaby M, El Desoky S, Middleton CC, et al. Steroid-sensitive nephrotic syndrome candidate gene CLVS1 regulates podocyte oxidative stress and endocytosis. *JCI Insight*. 2022;7, <http://dx.doi.org/10.1172/jci.insight.152102>.
37. Orihara M, Matsui K, Oite T, Shimizu F. Massive proteinuria induced in rats by a single intravenous injection of a monoclonal antibody. *J Immunol*. 1988;141:807–14.
38. New LA, Martin CE, Scott RP, Platt MJ, Keyvani Chahi A, Stringer CD, et al. Nephritin tyrosine phosphorylation is required to stabilize and restore podocyte foot process architecture. *J Am Soc Nephrol*. 2016;27:2422–35, <http://dx.doi.org/10.1681/ASN.2015091048>.