

## Original article

# Epidemiology of Fabry disease in patients in hemodialysis in the Madrid community

Elena Corchete Prats\*, Emilio González-Parra, Almudena Vega, Nicolás Macías, María Delgado, Milagros Fernández, Rafael Jesús Sánchez, Laura Álvarez, Ramón Jesús Miranda, Javier Vian, Virginia López, Evangelina Mérida, Mónica Pereira, David Sapiencia, Natalia Andrés, Patricia Muñoz, Yohana Gil, María Sánchez, Clara Cases, Beatriz Gil, Alicia García, Valeria Sainz, Simona Alexandru, Saúl Pampa, María López, José Carlos de la Flor, Patricia Nora Estrada, José Ramón Berlanga, Rocío Zamora, Rosa Sánchez, Laura Rodríguez-Osorio, Carmen Fraile, Fernando Caravaca-Fontán, Cristina Moratilla, Carmen Cabré, Karina Furaz, Luis Nieto, María Teresa Villaverde, Claudia Grisel Tapia, Santiago Cedeño, Sandra Castellano, Evaristo Valdés, Marta Ferreira, Pilar Martínez, Marta Sanz, Mercedes Sánchez, Francisco Ríos, Sofía Palomo, María Luisa Serrano, Ana Blanco, Laura Espinel, Fernando Tornero, Jose Antonio Herrero

Hospital Universitario Infanta Leonor: Hospital Infanta Leonor, Madrid, Spain

### ARTICLE INFO

#### Article history:

Received 15 October 2021

Accepted 3 March 2022

Available online 21 December 2022

#### Keywords:

Fabry disease

Hemodialysis

Screening

Lyso-Gl3

Madrid

Spain

### ABSTRACT

This study screened for Fabry disease (FD) in patients in hemodialysis (HD) in the region of Madrid (CAM) with a cross-sectional design to evaluate HD-prevalent patients, followed by a three-year period prospective design to analyze HD-incident patients.

**Inclusion criteria:** patients older than 18 years on HD in the CAM, excluding patients diagnosed with any other hereditary disease with renal involvement different from FD, that sign the Informed Consent (IC). **Exclusion criteria:** underaged patients or not agreeing or not being capable of signing the IC.

**Results:** 3470 patients were included, 63% males and with an average age of  $67.9 \pm 9.7$  years. 2357 were HD-prevalent patients and 1113 HD-incident patients. For HD-prevalent patients, average time in HD was 45.2 months (SD 51.3), in HD-incident patients proteinuria was present in 28.4%. There were no statistical differences in plasmatic alpha-galactosidase A ( $\alpha$ -GAL-A) activity or Lyso-Gl-3 values when comparing HD-prevalent and HD-incident populations and neither between males and females. A genetic study was performed in

**Abbreviations:**  $\alpha$ -GAL-A, alpha-galactosidase A; FD, Fabry disease; HD, hemodialysis; CAM, Comunidad Autónoma de Madrid; CGN, chronic glomerulonephritis; CKD, chronic kidney disease; DM, diabetes mellitus; ERT, enzymatic replacement therapy; HRP, high risk population; IC, informed consent; Lyso-Gl3, globotriaosylsphingosine.

\* Corresponding author.

E-mail address: [e.corchete@yahoo.es](mailto:e.corchete@yahoo.es) (E. Corchete Prats).

<https://doi.org/10.1016/j.nefro.2022.03.008>

2013-2514/© 2022 Sociedad Española de Nefrología. Published by Elsevier España, S.L.U. This is an open access article under the CC BY-NC-ND license (<http://creativecommons.org/licenses/by-nc-nd/4.0/>).

87 patients (2.5% of patients): 60 male patients with decreased enzymatic activity and 27 female patients either with a decreased GLA activity, increased Lyso-Gl3 levels or both. The genetic variants identified were: p.Asp313Tyr (4 patients), p.Arg220Gln (3 patients) and M290I (1 patient). None of the identified variants is pathogenic.

**Conclusions:** 76% of HD Centers of the CAM participated in the study. This is the first publication to describe the prevalence of FD in the HD-population of a region of Spain as well as its average  $\alpha$ -GAL-A-activity and plasmatic Lyso-Gl3 levels. It is also the first study that combines a cross-sectional design with a prospective follow-up design. This study has not identified any FD patient.

© 2022 Sociedad Española de Nefrología. Published by Elsevier España, S.L.U. This is an open access article under the CC BY-NC-ND license (<http://creativecommons.org/licenses/by-nc-nd/4.0/>).

## Epidemiología de la enfermedad de Fabry en pacientes en hemodiálisis de la Comunidad de Madrid

### RESUMEN

#### Palabras clave:

Enfermedad de Fabry  
Hemodiálisis  
Despistaje  
Lyso-Gl3  
Madrid  
España

El objetivo del estudio ha sido realizar un mapa descriptivo de la enfermedad de Fabry (EF) en la Comunidad de Madrid, así como realizar un despistaje de la EF a todo paciente incidente durante un período de 3 años.

**Criterios de inclusión:** Pacientes mayores de 18 años, excluyendo aquellos diagnosticados de cualquier otra enfermedad hereditaria con afectación renal diferente de la EF, que firmaran el consentimiento informado. **Criterios de exclusión:** pacientes menores de edad, no estar de acuerdo o no ser capaces de firmar el consentimiento informado.

**Resultados:** Se incluyeron 3.470 pacientes (63% hombres), con una edad media de  $67,9 \pm 9,7$  años, de los cuales 2.357 eran pacientes prevalentes y 1.113 incidentes. En el caso de los pacientes prevalentes, el tiempo medio en hemodiálisis (HD) fue de 45,2 (DE 51,3) meses. En pacientes incidentes, la proteinuria estuvo presente en el 28,4%. No hubo diferencias estadísticamente significativas en la actividad plasmática de alfa-galactosidasa A o valores de Lyso-Gl3 al comparar las poblaciones de incidentes y de prevalentes, y tampoco entre hombres y mujeres. Se realizó estudio genético en 87 pacientes (2,5% de los pacientes): 60 varones con disminución de la actividad enzimática y 27 mujeres con una disminución de la actividad enzimática, aumento de los niveles de Lyso-Gl3 o ambos. Las variantes genéticas identificadas fueron: p.Asp313Tyr (4 pacientes), p.Arg220Gln (3 pacientes) y M290I (un paciente). Ninguna de las variantes identificadas fue patógena.

**Conclusiones:** El 76% de los centros de HD de la Comunidad de Madrid participaron en el estudio. Este es el primer estudio epidemiológico prospectivo de EF en la población de HD de una región de España. También es la primera vez que se describen niveles de alfa-galactosidasa A y Lyso-Gl3 en HD, sin embargo, en este estudio no se han identificado pacientes con EF.

© 2022 Sociedad Española de Nefrología. Publicado por Elsevier España, S.L.U. Este es un artículo Open Access bajo la licencia CC BY-NC-ND (<http://creativecommons.org/licenses/by-nc-nd/4.0/>).

## Introduction

Fabry disease (FD) is a lysosomal storage disease, with an X-chromosome-linked inheritance, caused by the deficiency of the  $\alpha$ -GAL-A lysosomal enzyme due to mutations in its codifying gene.<sup>1,2</sup> This enzyme is responsible for the hydrolysis of the terminal alphasgalactosyl residues of glycosphingolipids and its deficiency causes their progressive storage, mainly globotriaosylceramide (Gb-3), in multiple cell types and organs.<sup>1,2</sup> The storage material also triggers deleterious signaling cascades as inflammatory and fibrotic ones.<sup>1-4</sup> These pathways are also activated by globotriaosylsphingo-

sine, Lyso-Gl3,<sup>5,6</sup> which is a water-soluble molecule that arises from the deacylation of Gb3 and a proposed biomarker in FD with an important role in diagnosis.<sup>7-9</sup>

There are two main phenotypic groups: classical and late-onset. In the classic phenotype, there is a severe enzymatic deficiency, and disease manifestations occur already in childhood. Pediatric patients suffer from intense pain crisis in hands and feet, hypohidrosis, cornea verticillata, intermittent fever, gastrointestinal involvement and angiokeratomas. The disease progresses with myocardial, cerebrovascular and renal involvement, resulting in premature death. Late-onset patients develop cardiac and renal signs and symptoms in adulthood, years later in average than classic patients.<sup>1,2</sup>

Regarding renal involvement, Gb3 is stored globally in the kidney: in podocytes, mesangium, endothelium of the glomerular capillaries, tubular epithelia, interstitial and endothelial cells as well as in the muscular layer of arteries and arterioles. Gb3-deposits *per se* mediate an array of effects that contribute to FD nephropathy: tubular cell damage, cellular proliferation that will lead to mesangial expansion and vasculopathy, endothelial dysfunction which will also contribute to the vasculopathy, podocyte damage and activation of inflammation and fibrotic signaling pathways.<sup>10–12</sup> Fibrotic patterns in FD correspond to glomerulosclerosis and interstitial fibrosis. In average, male patients with the classic phenotype have end renal failure in their forties.<sup>1,2</sup>

In heterozygous female FD patients, phenotypes can range from asymptomatic as to presenting with similar severity as classic males, depending on the extent of silencing of the X-chromosome carrying the mutated  $\alpha$ -GAL-A-gene.<sup>1,2,13</sup> In a recent retrospective study in a large cohort of patients, 19% of classic FD female patients had a cardiac, renal or cerebral event before the first visit, in comparison with 30% of classical males.<sup>14</sup>

The estimated prevalence of FD is of 1:80,000–1:117,000 of live births,<sup>15,16</sup> although data from newborn screenings provide a wide range of published prevalences.<sup>17–19</sup> The prevalence of FD in patients with renal, cardiac or cerebrovascular disease is much higher than the prevalence in the general populations since in FD these are considered High Risk Populations (HRP). On the other hand, as in other genetic disorders, in FD some “mutations” previously categorized as pathogenic are now considered benign  $\alpha$ -GAL-A genetic variants, therefore in older studies prevalence might be overstated. Indeed, Doheny et al. (2017) reviewed the published prevalence of FD in HRPs considering the improved knowledge of FD mutations: of the 23,954 males screened in HD in previous publications, the real prevalence decreased from 0.42% to 0.21%.

FD is one of the few Rare Diseases with an available treatment. Since 2001 enzymatic replacement therapy (ERT) is available and more recently a chaperone therapy has also been approved in Europe.<sup>2</sup> Many studies have highlighted the importance of initiating specific FD therapy before irreversible organ-damage has been established to improve outcomes.<sup>2,20–22</sup>

The present study screened for FD in HD patients in the region of Madrid (CAM). The study had two stages, first a cross-sectional design to evaluate HD-prevalent patients, followed by a three-year period prospective design to analyze HD-incident patients.

## Materials and methods

### Study design

Observational, multicentric, cross-sectional and prospective study. This study screened for FD in the HD-prevalent population in the Comunidad de Madrid (CAM) with 6.642 million inhabitants as well as analyzed the incidence of FD over the period of three years in the incident HD-population. Secondary objectives were to conduct a family study of the new diagnosed

**Table 1 – Total patients characteristics.**

	HD-incident	HD-prevalent
N total: 3470	1113	2357
Male, N (%)	701 (63)	1367 (58)
Age, years (SD)	67.9 (9.7)	77.8 (8.3)
Average time in HD months (SD)	NA	45.2 (51.3)
Proteinuria (%)	28.4%	NA

HD: hemodialysis; SD: standard deviation.

cases and to offer genetic information to patients and family members newly diagnosed with FD.

The study was approved by the HD Unit dependent Ethics Committee (October 13th, 2015 (meeting minutes number 17/15), and modified in November 29 2016 (meeting minutes number 20/2016)). All the research was compliant with the individual rights of the patient (Helsinki declaration, Fortaleza act, 2013) and Oviedo convention (1997).

### Methodology

Inclusion criteria: patients older than 18 years on HD in the CAM, excluding patients diagnosed with any other hereditary disease with renal involvement different from FD, that sign the IC. Exclusion criteria: underaged patients or not agreeing or not being capable of signing the IC.

The screening algorithm is depicted in Fig. 1.  $\alpha$ -GAL-A enzyme activity, Lyso-Gl3 levels and genetic analysis was determined in plasma by means of dried blood spots on filter paper. In the study visit the date of sample collection date, age, sex, kidney disease etiology were recorded. Additionally, date of HD initiation on HD-prevalent patients and proteinuria in HD-incident patients was also collected. Diagnostic tests were performed at the medical laboratories of ARCHIMED Life Science GmbH (ARCHIMEDlife; [www.archimedlife.com](http://www.archimedlife.com)).

### Statistical analysis

Statistical analysis for the primary objective and the descriptive of the variables included are detailed below. Quantitative variables will be described with measures of centralization and dispersion (mean, SD, mediana, minimum, maximum, interquartile range). Data was analyzed by SPSS v22. When comparing groups of non-normal distribution have been compared using wilcoxon rank-sum test. Confidence intervals will be calculated at 95%, where necessary, for the result variables associated with the primary and secondary objectives. Statistical significance was considered as a two-sided *p*-value < 0.05.

## Results

24 HD Units of the CAM participated in the study from the beginning of 2016 to the end of 2019. From a total of 3,470 patients, 2357 HD-prevalent patients and 1,113 HD-incident patients were included in the study. Patients' characteristics are described in Table 1 and the kidney disease etiology is presented in Fig. 2.

Plasmatic  $\alpha$ -GAL-A activity and Lyso-GL-3 values segregated by type of population and sex are shown in Table 2.

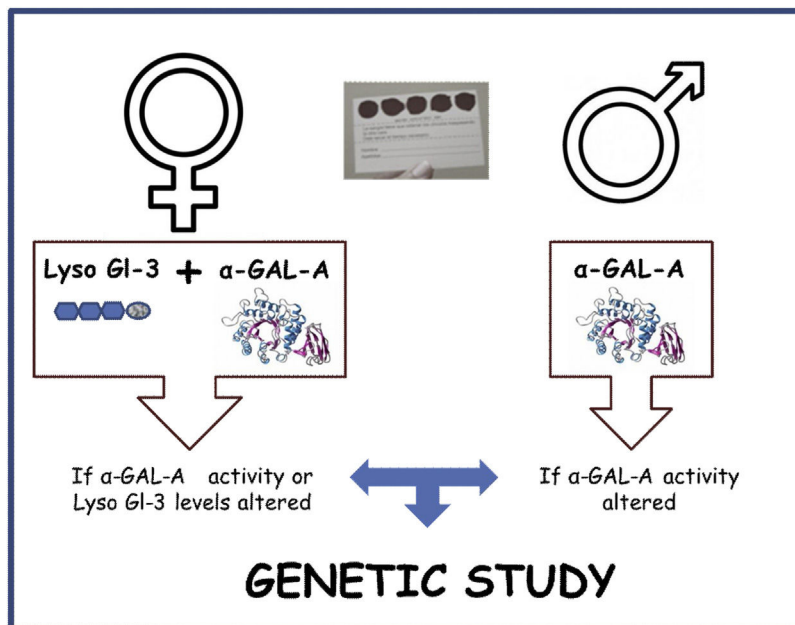


Fig. 1 – Diagnostic algorithm.

Table 2 – Plasmatic  $\alpha$ -GAL-A activity and Lyso-Gl3 levels in both populations.

	Prevalente	Incidente	Test statistic
<b>Male</b>			
$\alpha$ -GAL-A activity $\mu\text{mol/l/h}$ Mediana [Range Q3-Q1]	3.5 [2.7-4.7]	3.7 [2.8-5.2]	$P = 0.64^1$
Lyso-Gl3 ng/mL Mediana [Range Q3-Q1]	1.4 [1.3-1.6]	1.3 [1.2-2.1]	$P = 0.69^1$
<b>Female</b>			
$\alpha$ -GAL-A activity $\mu\text{mol/l/h}$ Mediana [Range Q3-Q1]	3.4 [2.3-4.9]	4.5 [2.6-6.3]	$P = 0.32^1$
Lyso-Gl3 ng/mL Mediana [Range Q3-Q1]	1.4 [1.1-1.7]	1.7 [1.4-2.0]	$P = 0.11^1$

Cut-off values:  $\alpha$ -GAL-A activity  $> 2.8 \mu\text{mol/l/h}$ ; Lyso-Gl3:  $< 3.5 \text{ ng/ml}$ . HD: hemodialysis; SD: standard deviation (95% CI). N is the number of non-missing value.

<sup>1</sup>Kruskal-Wallis.

## Etiology of CKD

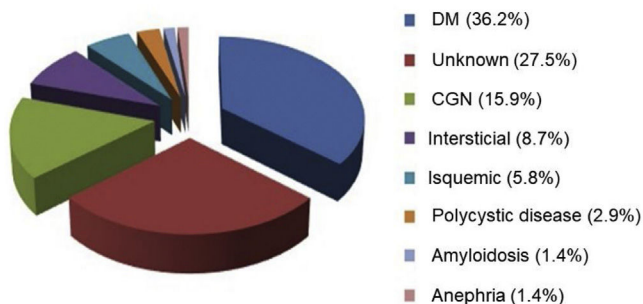


Fig. 2 – Etiology of CKD. CKD: chronic kidney disease; DM: diabetes mellitus; CGN: chronic glomerulonephritis.

There were no statistical differences between HD-incident and HD-prevalent populations and neither between males nor females.

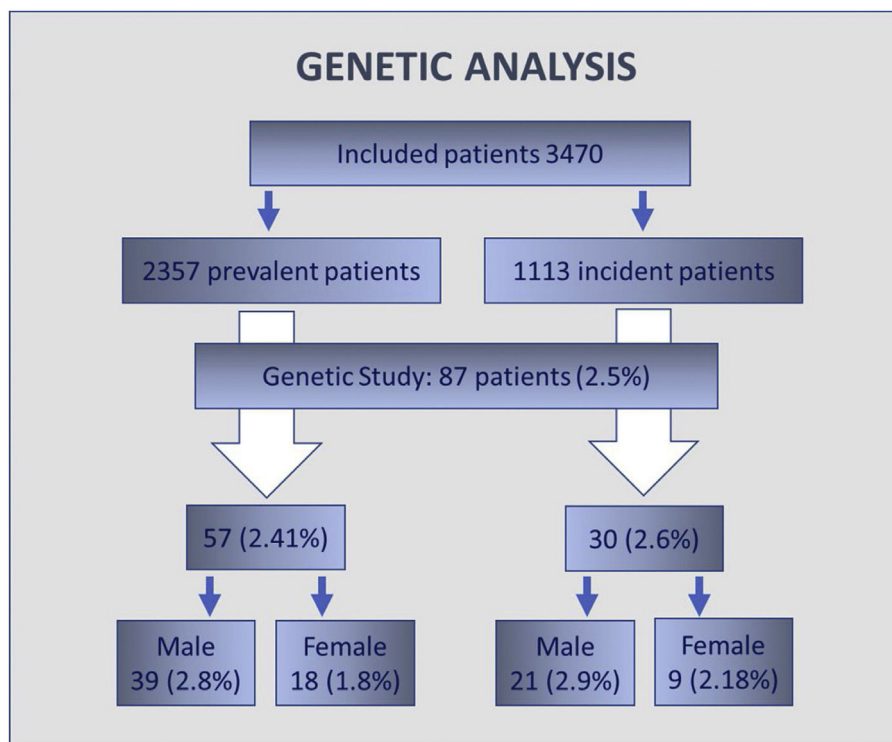
A genetic study was performed in 87 patients, which represents 2.5% of the total screened population. 60 male patients

with a decreased enzymatic activity were studied. 27 female patients with an altered level of  $\alpha$ -GAL-A activity, of Lyso-Gl3 or both were evaluated. No genetic variant was identified in 79 patients (Fig. 3). The genetic variants identified were: p.Asp313Tyr (4 patients), p.Arg220Gln (3 patients) and M290I (1 patient). None of the identified variants is pathogenic.

## Discussion

76% of HD Centers of the CAM participated in the study. To our knowledge, this is the first FD epidemiological study with a cross-sectional and prospective follow-up design published in the literature. It is also the first time that the average  $\alpha$ -GAL-A activity and plasmatic Lyso-Gl3 levels of the HD population of the CAM has been described, which will help to stablish more precise cut-off values in future studies, necessary for the more accurate identification of FD patients.

The present study has not identified any FD patient neither in the screened HD-prevalent population nor in the HD-incident one. There are several reasons that could explain why there have been no positive FD patients identified. On one hand, another FD-screening in HD-patients at national



**Fig. 3 – Flow chart of patients to detect genetic alterations in prevalent and incident patients.**

level in Spain was started at the same time that our study was being set up in the CAM. The results from this other national study have not yet been published, therefore the data on both the number of screened patients as well as the number of FD-identified patients in the CAM is missing by now. Consequently, there is the possibility that FD-positive patients in the CAM were already identified by this other study<sup>23</sup> or by other means, yet these patients were not included in our study.

On the other hand, taking a closer look at the evolution of FD prevalence in HRPs<sup>24</sup> over time, in males, the prevalence decreases in all HRPs when comparing data collected in two consecutive periods, 2000–2008 vs. 2009–2017. In HD, the prevalence changed from 0.32% to 0.17%. In another study that analyzed diagnostic delays in FD comparing two consecutive 5-year-periods from 2001 to 2013 in cardiovascular HRPs, the mean time from diagnosis had diminished from 18 to 13 years. Therefore, it is possible that the growing awareness of the disease among health care professionals leads to earlier diagnosis and management of these patients, which would limit the number of unidentified FD patients in the HD subpopulation.<sup>24</sup> In females, on the contrary, the proportion of identified FD-patients in later screening increases<sup>24</sup> as well as the number of screened females.

Regarding the diagnostic algorithm in women, the present research has used the screening modality of analyzing  $\alpha$ -GAL-A and Lyso-Gl3 simultaneously, proceeding to the genetic analysis in the case one of these parameters were to be abnormal.<sup>8</sup> Most diagnostic algorithms recommend directly performing the genetic analysis in women since due to the lyonization process,  $\alpha$ -GAL-A plasma activity can be normal in female FD patients.<sup>2,20–22</sup> Nevertheless, in a recent study<sup>8</sup> with

12,000 screened females following our same algorithm, the highest positive predictive value corresponded to the group with abnormal levels of both Lyso-Gl3 and  $\alpha$ -GAL-A activity (97%), followed by abnormal Lyso-Gl3 only (39%) and abnormal  $\alpha$ -GAL-A activity only (6%). Indeed, the negative predictive value was of 100% when the levels of Lyso-Gl3 and  $\alpha$ -GAL-A activity were within normal ranges, as assessed by sequencing samples from for almost 400 females.

Screening for FD among patients with chronic kidney disease has mostly been done in haemodialysis patients and kidney transplant recipients, for whom the renal damage is already irreversible. Thus, the prevalence of FD in haemodialysis patients could be underestimated.<sup>24</sup>

Early diagnosis is crucial for correct patient management as well as identification of affected family. In FD, renal function is a predictor of outcomes both in males and females.<sup>21,25</sup> Therefore standardizing early diagnosis programs in patients with Red-flag-Fabry symptoms within early stages of CKD and CKDs of unknown etiology would be essential. The impact of such effort would be of greatest value with the leadership and consensus of the Medical Societies. In our view, it would be desirable that a FD test was given to any HD-incident patient as a routine clinical practice, yet one of the added values of screening studies is to improve FD awareness in HD units, facilitating a more.

### Authors' contributions

The main authors study concept, design and execution; article writing and critical revision.

All signing authors read and approved the final manuscript.

## Ethics approval and consent to participate

The study was approved by the HD Uni dependent Ethics Committee (October 13th 2015 (meeting minutes number 17/15), and modified in November 29 2016 (meeting minutes number 20/2016)). All the research was compliant with the individual rights of the patient (Helsinki declaration, Fortaleza act, 2013) and Oviedo convention (1997).

## Consent for publication

Not applicable.

## Availability of data and materials

The datasets used and/or analyzed during the current study are available from the corresponding author on reasonable request.

## Funding

This work was partially supported by grants from Sanofi-Genzyme (Investigator Initiated Research Grant 2015) given to the Sociedad Madrileña de Nefrología. Funders played no role in the design, collection, analysis, or interpretation of the data or in the decision to submit the manuscript for publication.

## Conflict of interests

The main authors have received support from pharmaceutical companies with treatments for Fabry and other rare diseases.

## Acknowledgements

Our special gratitude towards the patients for their voluntary participation, to the participating centers and to the Sociedad Madrileña de Nefrología for its support and collaboration.

## REFERENCES

- Herrero Calvo JA. Enfermedad de Fabry: una forma de enfermedad renal crónica diagnosticable y tratable [Fabry's disease: a form of chronic renal disease that may be diagnosed and treated]. *Nefrología*. 2008;28:13–9. Spanish. PMID: 18336123.
- Ortiz A, Germain DP, Desnick RJ, Politei J, Mauer M, Burlina A, et al. Fabry disease revisited: management and treatment recommendations for adult patients. *Mol Genet Metab*. 2018;123:416–27, <http://dx.doi.org/10.1016/j.ymgme.2018.02.014>. Epub 2018 Feb 28. PMID: 29530533.
- Rozenfeld P, Feriozzi S. Contribution of inflammatory pathways to Fabry disease pathogenesis. *Mol Genet Metab*. 2017;122:19–27, <http://dx.doi.org/10.1016/j.ymgme.2017.09.004>. Epub 2017 Sep 13. PMID: 28947349.
- Mauhin W, Lidove O, Masat E, Mingozzi F, Mariampillai K, Ziza JM, et al. Innate and adaptive immune response in Fabry disease. *JIMD Rep*. 2015;22:1–10, <http://dx.doi.org/10.1007/8904-2014-371>. Epub 2015 Feb 18. PMID: 25690728; PMCID: PMC4486269.
- Sanchez-Niño MD, Carpio D, Sanz AB, Ruiz-Ortega M, Mezzano S, Ortiz A. Lyso-Gb3 activates Notch1 in human podocytes. *Hum Mol Genet*. 2015 Oct 15;24:5720–32, <http://dx.doi.org/10.1093/hmg/ddv291>. Epub 2015 Jul 23. PMID: 26206887.
- Jeon YJ, Jung N, Park JW, Park HY, Jung SC. Epithelial-mesenchymal transition in kidney tubular epithelial cells induced by globotriaosylsphingosine and globotriaosylceramide. *PLOS ONE*. 2015;10:e0136442, <http://dx.doi.org/10.1371/journal.pone.0136442>. PMID: 26291612; PMCID: PMC4546309.
- Nowak A, Mechtler TP, Hornemann T, Gawinecka J, Theswet E, Hilz MJ, et al. Genotype, phenotype and disease severity reflected by serum LysoGb3 levels in patients with Fabry disease. *Mol Genet Metab*. 2018;123:148–53, <http://dx.doi.org/10.1016/j.ymgme.2017.07.002>. Epub 2017 Jul 5. PMID: 28728877.
- Balendran S, Oliva P, Sansen S, Mechtler TP, Streubel B, Cobos PN, et al. Diagnostic strategy for females suspected of Fabry disease. *Clin Genet*. 2020;97:655–60, <http://dx.doi.org/10.1111/cge.13694>. Epub 2020 Jan 7. PMID: 31860127.
- Moreno-Martinez D, Aguiar P, Auray-Blais C, Beck M, Bichet DG, Burlina A, et al. Standardising clinical outcomes measures for adult clinical trials in Fabry disease: a global Delphi consensus. *Mol Genet Metab*. 2021;132:234–43, <http://dx.doi.org/10.1016/j.ymgme.2021.02.001>. Epub 2021 Feb 20. PMID: 33642210.
- Eikrem Ø, Skrunes R, Tøndel C, Leh S, Houge G, Svarstad E, et al. Pathomechanisms of renal Fabry disease. *Cell Tissue Res*. 2017;369:53–62, <http://dx.doi.org/10.1007/s00441-017-2609-9>. Epub 2017 Apr 12. PMID: 28401309.
- Feriozzi S, Rozenfeld P. Pathology and pathogenic pathways in Fabry nephropathy. *Clin Exp Nephrol*. 2021, <http://dx.doi.org/10.1007/s10157-021-02058-z>. Epub ahead of print. PMID: 33768330.
- Tøndel C, Kanai T, Larsen KK, Ito S, Politei JM, Warnock DG, et al. Foot process effacement is an early marker of nephropathy in young classic Fabry patients without albuminuria. *Nephron*. 2015;129:16–21, <http://dx.doi.org/10.1159/000369309>. Epub 2014 Dec 17. PMID: 25531941.
- Wilcox WR, Oliveira JP, Hopkin RJ, Ortiz A, Banikazemi M, Feldt-Rasmussen U, et al. Females with Fabry disease frequently have major organ involvement: lessons from the Fabry Registry. *Mol Genet Metab*. 2008;93:112–28, <http://dx.doi.org/10.1016/j.ymgme.2007.09.013>. Epub 2007 Nov 26. PMID: 18037317.
- Arends M, Wanner C, Hughes D, Mehta A, Oder D, Watkinson OT, et al. Characterization of classical and nonclassical Fabry disease: a multicenter study. *J Am Soc Nephrol*. 2017;28:1631–41, <http://dx.doi.org/10.1681/ASN.2016090964>. Epub 2016 Dec 15. PMID: 27979989; PMCID: PMC5407735.
- Meikle PJ, Hopwood JJ, Clague AE, Carey WF. Prevalence of lysosomal storage disorders. *JAMA*. 1999;281:249–54, <http://dx.doi.org/10.1001/jama.281.3.249>. PMID: 9918480.
- Desnick RJ, Ioannou YA, Eng CM. Alpha-galactosidase A deficiency: Fabry disease. In: Scriver CR, Beaudet AL, Sly WS, Valle D, editors. *The metabolic and molecular basis of inherited disease*, New York, NY, USA: McGraw-Hill. 8th ed., 2001, pp. 3733–74.

17. Spada M, Pagliardini S, Yasuda M, Tukul T, Thiagarajan G, Sakuraba H, et al. High incidence of later-onset fabry disease revealed by newborn screening. *Am J Hum Genet.* 2006;79:31-40, <http://dx.doi.org/10.1086/504601>. Epub 2006 Apr 28. PMID: 16773563; PMCID: PMC1474133.
18. Bender F, Burin MG, Tirelli KM, Medeiros F, Bitencourt FH, Civallo G, et al. Newborn screening for lysosomal disorders in Brazil: a pilot study using customized fluorimetric assays. *Genet Mol Biol.* 2020;43, <http://dx.doi.org/10.1590/1678-4685-GMB-2018-0334>, e20180334. PMID: 32478793; PMCID: PMC7263201.
19. Wasserstein MP, Caggana M, Bailey SM, Desnick RJ, Edelmann L, Estrella L, et al. The New York pilot newborn screening program for lysosomal storage diseases: report of the first 65,000 infants. *Genet Med.* 2019;21:631-40, <http://dx.doi.org/10.1038/s41436-018-0129-y>. Epub 2018 Aug 10. PMID: 30093709; PMCID: PMC6369014.
20. Biegstraaten M, Arngrímsson R, Barbey F, Boks L, Cecchi F, Deegan PB, et al. Recommendations for initiation and cessation of enzyme replacement therapy in patients with Fabry disease: the European Fabry Working Group consensus document. *Orphanet J Rare Dis.* 2015;10:36, <http://dx.doi.org/10.1186/s13023-015-0253-6>. PMID: 25885911; PMCID: PMC4383065.
21. Schiffmann R, Hughes DA, Linthorst GE, Ortiz A, Svarstad E, Warnock DG, et al. Screening, diagnosis, and management of patients with Fabry disease: conclusions from a “Kidney Disease: Improving Global Outcomes” (KDIGO) Controversies Conference. *Kidney Int.* 2017;91:284-93, <http://dx.doi.org/10.1016/j.kint.2016.10.004>. Epub 2016 Dec 18. PMID: 27998644.
22. Wanner C, Arad M, Baron R, Burlina A, Elliott PM, Feldt-Rasmussen U, et al. European expert consensus statement on therapeutic goals in Fabry disease. *Mol Genet Metab.* 2018;124:189-203, <http://dx.doi.org/10.1016/j.ymgme.2018.06.004>. Epub 2018 Jun 12. PMID: 30017653.
23. Del Pino MD, Ortiz A, Torra R, Hernandez D. PrEFiNe plan: strategic plan for Fabry diseases in nephrology. *Nefrologia.* 2016;36:376-80, <http://dx.doi.org/10.1016/j.nefro.2016.03.009>. English, Spanish. Epub 2016 Apr 23. PMID: 27118193.
24. Doheny D, Srinivasan R, Pagant S, Chen B, Yasuda M, Desnick RJ. Fabry Disease: prevalence of affected males and heterozygotes with pathogenic GLA mutations identified by screening renal, cardiac and stroke clinics, 1995-2017. *J Med Genet.* 2018;55:261-8, <http://dx.doi.org/10.1136/jmedgenet-2017-105080>. Epub 2018 Jan 12. PMID: 29330335.
25. Goicoechea M, Gomez-Preciado F, Benito S, Torras J, Torra R, Huerta A, et al. Predictors of outcome in a Spanish cohort of patients with Fabry disease on enzyme replacement therapy. *Nefrologia.* 2021, <http://dx.doi.org/10.1016/j.nefro.2021.01.002>. S0211-6995(21)00031-X. English, Spanish. Epub ahead of print. PMID: 33714629.